

EPA 3640A Calibrates Report

Sample: EPA mix calibrates for GPC

Id: test001

Start: 11:52:28, 01/08/03

End: 12:55:19, 01/08/03

Volume: 5000

Method: calibration

Column Name: 100% DCM

Column Description: 100% DCM

Description: 01.08.03

Position: 1

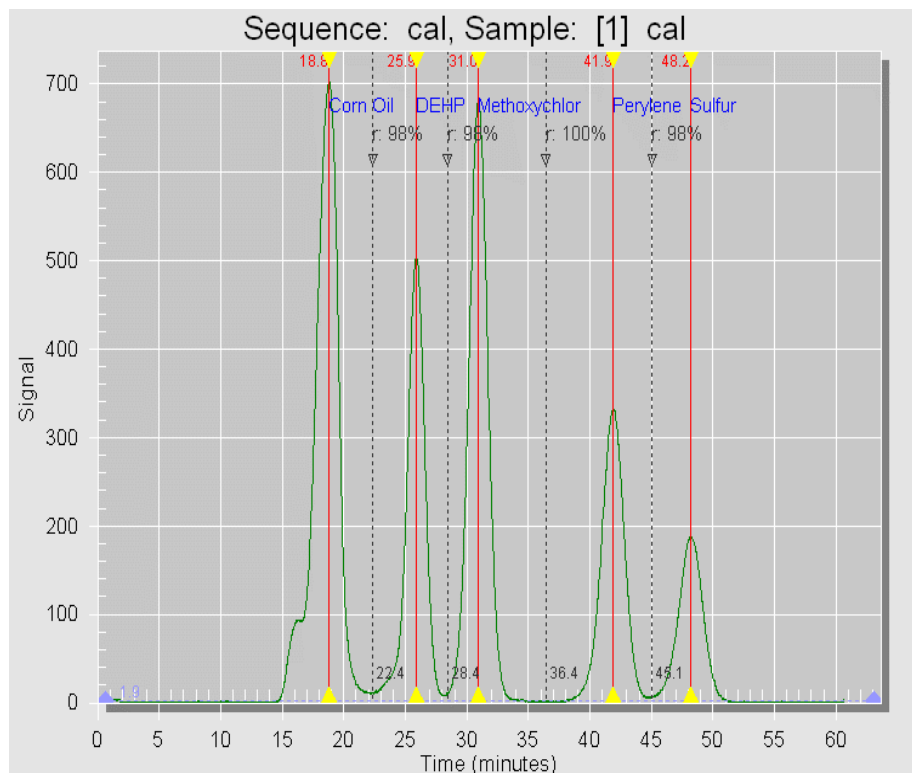
Outcome: Processed normal

Serial No: CO1001230021

Pressure Limit: 30

Fractions

Output Location	Collect	Flow Rate	Fraction Time
1	n	4.70	60.00
1	n	4.70	0.00
1	n	4.70	0.00
1	n	4.70	0.00
1	n	4.70	0.00



Annotation ID	Label	Peak Value	Retention Time
1	Corn Oil	22.4	18.6
2	DEHP	28.4	25.9
3	Methoxychlor	36.4	31.6
4	Perylene Sulfur	45.1	41.9