



Head Selection & Tip Ordering Guide

Locate your Apricot Designs pipettor model in the list below and then proceed to the head & tip selection guide for your pipettor.

If you have any questions about which head or tips to use for your Apricot pipettor, please contact us at:

626-966-3299 or info@apricotdesigns.com.

i-Pipette Models

iPBA-96-500
iPBA2-96-500
iPBA2S-96-500
iPPA-96-500
iPPA2-96-500
iPPA2S-96-500
iPPA2MS-96-500

96-channel 500 ul
maximum volume
versions
Page 2

iPBA-96-1000
iPBA2-96-1000
iPBA2S-96-1000
iPPA-96-1000
iPPA2-96-1000
iPPA2S-96-1000
iPPA2MS-96-1000

96-channel 1000 ul
maximum volume
versions
Page 5

iPBA-96-125
iPBA2-96-125
iPBA2S-96-125
iPPA-96-125
iPPA2-96-125
iPPA2S-96-125
iPPA2MS-96-125

96-channel 125 ul
maximum volume
versions
Page 8

iPBA-384-125
iPBA2-384-125
iPBA2S-384-125
iPPA-384-125
iPPA2-384-125
iPPA2S-384-125
iPPA2MS-384-125

384-channel 125 ul
maximum volume
versions
Page 9

Personal Pipettor (PP) Models

PP-96H-M
PP-96H-H

96-channel 550 ul
maximum volume
versions
Page 12

PP-96L-M

96-channel 125 ul
maximum volume
versions
Page 17

PP-384-M

384-channel 125 ul
maximum volume
versions
Page 20

Total Pipetting Solution (TPS) Models

TPS-24

24-channel version
Page 26

TPS-96H

96-channel 550 ul
maximum volume
versions
Page 29

TPS-96L

96-channel 125 ul
maximum volume
versions
Page 31

TPS-384

384-channel 125 ul
maximum volume
versions
Page 33

096-A-01-EZL-SL-550



96

DISPOSABLE

- Recommended for volume range 2-500 ul
- EZ-Load Head - no tools required
- Pipette to 96 labware
- Pipette to 384 labware using the iP Indexer 384 supplied with 96 channel i-Pipette models

Recommended tips for 5 - 500 ul volumes

Product Number	Description	Max Vol	Tips / Rack	Racks / Case
550-096-EZ-NS	Non-Sterile	550 ul	96	40
550-096-EZ-S	Sterile	550 ul	96	40
550-096-EZ-FS	Sterile, Filter Tip	400 ul	96	40

Recommended tips for 2 - 250 ul volumes

Product Number	Description	Max Vol	Tips / Rack	Racks / Case
250-096-EZ-NS	Non-Sterile	250 ul	96	40
250-096-EZ-S	Sterile	250 ul	96	40
250-096-EZ-FS	Sterile, Filter Tip	(pending)	96	40

096-A-01-EZL-550-SC



8

DISPOSABLE

SERIAL DILUTION

- Recommended for volume range 2-500 ul
- EZ-Load Head - no tools required
- Serial Dilution by COLUMN
- Pipette to 96 labware
- For use with i-Pipette models equipped with manual or motorized serial dilution shuttle

Recommended tips for 5 - 500 ul volumes

Product Number	Description	Max Vol	Tips / Strip	Strips / Rack	Racks / Case
550-008-EZ-NS	Non-Sterile	550 ul	8	12	40
550-008-EZ-S	Sterile	550 ul	8	12	40
550-008-EZ-FS	Sterile, Filter Tip	400 ul	8	12	40

Recommended tips for 2 - 250 ul volumes

Product Number	Description	Max Vol	Tips / Strip	Strips / Rack	Racks / Case
250-008-EZ-NS	Non-Sterile	250 ul	8	12	40
250-008-EZ-S	Sterile	250 ul	8	12	40
250-008-EZ-FS	Sterile, Filter Tip	(pending)	8	12	40

096-A-01-EZL-SL-ESP



96

DISPOSABLE

Recommended tips for 2 - 125 ul volumes

Product Number	Description	Max Vol	Tips / Rack	Racks / Case
125-096-EZ-NS	Non-Sterile	125 ul	96	40
125-096-EZ-S	Sterile	125 ul	96	40

Recommended tips for 2 - 50 ul volumes

Product Number	Description	Max Vol	Tips / Rack	Racks / Case
050-096-EZ-NS	Non-Sterile	50 ul	96	40
050-096-EZ-S	Sterile	50 ul	96	40

- Recommended for volume range 2-125 ul
- The high-volume pipettor may give acceptable results below 2 ul; a low-volume pipettor model is recommended for best performance at < 2ul.
- EZ-Load Head - no tools required
- Pipette to 96 labware
- Pipette to 384 labware using the iP Indexer 384 supplied with 96 channel i-Pipette models
- **CAUTION:** The maximum volume of this tip is much lower than the pipettor plunger capacity. When using this head, the method must be set up correctly to prevent aspiration of liquid beyond the maximum volume of the tip in order to prevent undesired flooding of the pipettor mechanism.

Recommended tips for 2 - 15 ul volumes

Product Number	Description	Max Vol	Tips / Rack	Racks / Case
015-096-EZ-NS	Non-Sterile	15 ul	96	20
015-096-EZ-S	Sterile	15 ul	96	20

096-A-01-EZL-SC



8

DISPOSABLE

SERIAL DILUTION

Recommended tips for 2 - 125 ul volumes

Product Number	Description	Max Vol	Tips / Strip	Strips / Rack	Racks / Case
125-008-EZ-NS	Non-Sterile	125 ul	8	12	20
125-008-EZ-S	Sterile	125 ul	8	12	20

Recommended tips for 2 - 50 ul volumes

Product Number	Description	Max Vol	Tips / Strip	Strips / Rack	Racks / Case
050-008-EZ-NS	Non-Sterile	50 ul	8	12	20
050-008-EZ-S	Sterile	50 ul	8	12	20

- Recommended for volume range 2-125 ul
- The high-volume pipettor may give acceptable results below 2 ul; a low-volume pipettor model is recommended for best performance at < 2ul.
- EZ-Load Head - no tools required
- Serial Dilution by COLUMN
- Pipette to 96 labware
- For use with i-Pipette models equipped with manual or motorized serial dilution shuttle
- **CAUTION:** The maximum volume of this tip is much lower than the pipettor plunger capacity. When using this head, the method must be set up correctly to prevent aspiration of liquid beyond the maximum volume of the tip in order to prevent undesired flooding of the pipettor mechanism.

Recommended tips for 2 - 25 ul volumes

Product Number	Description	Max Vol	Tips / Strip	Strips / Rack	Racks / Case
015-008-EZ-NS	Non-Sterile	15 ul	8	12	20
015-008-EZ-S	Sterile	15 ul	8	12	20

096-A-01-EZL-SL-550



24

DISPOSABLE

- Special Head for Corning HTS Transwell Plates
- Recommended for volume range 2-500 ul
- EZ-Load Head - combined with Tip Collar and Adaptor Plate
- User loads 24 tips manually into Tip Collar

Recommended tips for 5 - 500 ul volumes

Product Number	Description	Max Vol	Tips / Rack	Racks / Case
550-096-EZ-NS	Non-Sterile	550 ul	96	40
550-096-EZ-S	Sterile	550 ul	96	40
550-096-EZ-FS	Sterile, Filter Tip	400 ul	96	40

Recommended tips for 2 - 250 ul volumes

Product Number	Description	Max Vol	Tips / Rack	Racks / Case
250-096-EZ-NS	Non-Sterile	250 ul	96	40
250-096-EZ-S	Sterile	250 ul	96	40
250-096-EZ-FS	Sterile, Filter Tip	(pending)	96	40

096-A-01-EZL-SL-1000



96

DISPOSABLE

- Recommended for volume range 10-1000 ul
- EZ-Load Head - no tools required
- Pipette to 96 labware
- Pipette to 384 labware using the iP Indexer 384 supplied with 96 channel i-Pipette models

Recommended tips for 10 - 1000 ul volumes

Product Number	Description	Max Vol	Tips / Rack	Racks / Case
1000-096-EZ-NS	Non-Sterile	1000 ul	96	40
1000-096-EZ-S	Sterile	1000 ul	96	40
1000-096-EZ-FS	Sterile, Filter Tip	(pending)	96	40

096-A-01-EZL-1000-SC



8

DISPOSABLE

SERIAL DILUTION

- Recommended for volume range 10-1000 ul
- EZ-Load Head - no tools required
- Serial Dilution by COLUMN
- Pipette to 96 labware
- For use with i-Pipette models equipped with manual or motorized serial dilution shuttle

Recommended tips for 10 - 1000 ul volumes

Product Number	Description	Max Vol	Tips / Strip	Strips / Rack	Racks / Case
1000-008-EZ-NS	Non-Sterile	1000 ul	8	12	40
1000-008-EZ-S	Sterile	1000 ul	8	12	40
1000-008-EZ-FS	Sterile, Filter Tip	(pending)	8	12	40

096-A-01-EZL-SL-550



96

DISPOSABLE

- Recommended for volume range 2-500 ul
- EZ-Load Head - no tools required
- Pipette to 96 labware
- Pipette to 384 labware using the iP Indexer 384 supplied with 96 channel i-Pipette models
- **CAUTION:** The maximum volume of this tip is much lower than the pipettor plunger capacity. When using this head, the method must be set up correctly to prevent aspiration of liquid beyond the maximum volume of the tip in order to prevent undesired flooding of the pipettor mechanism.

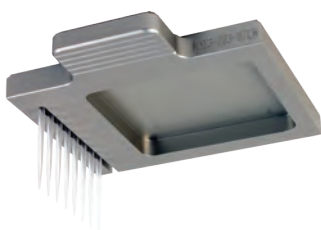
Recommended tips for 5 - 500 ul volumes

Product Number	Description	Max Vol	Tips / Rack	Racks / Case
550-096-EZ-NS	Non-Sterile	550 ul	96	40
550-096-EZ-S	Sterile	550 ul	96	40
550-096-EZ-FS	Sterile, Filter Tip	400 ul	96	40

Recommended tips for 2 - 250 ul volumes

Product Number	Description	Max Vol	Tips / Rack	Racks / Case
250-096-EZ-NS	Non-Sterile	250 ul	96	40
250-096-EZ-S	Sterile	250 ul	96	40
250-096-EZ-FS	Sterile, Filter Tip	(pending)	96	40

096-A-01-EZL-550-SC



8

DISPOSABLE

SERIAL DILUTION

- Recommended for volume range 2-500 ul

- EZ-Load Head - no tools required
- Serial Dilution by COLUMN
- Pipette to 96 labware
- For use with i-Pipette models equipped with manual or motorized serial dilution shuttle
- **CAUTION:** The maximum volume of this tip is much lower than the pipettor plunger capacity. When using this head, the method must be set up correctly to prevent aspiration of liquid beyond the maximum volume of the tip in order to prevent undesired flooding of the pipettor mechanism.

Recommended tips for 5 - 500 ul volumes

Product Number	Description	Max Vol	Tips / Strip	Strips / Rack	Racks / Case
550-008-EZ-NS	Non-Sterile	550 ul	8	12	40
550-008-EZ-S	Sterile	550 ul	8	12	40
550-008-EZ-FS	Sterile, Filter Tip	400 ul	8	12	40

Recommended tips for 2 - 250 ul volumes

Product Number	Description	Max Vol	Tips / Strip	Strips / Rack	Racks / Case
250-008-EZ-NS	Non-Sterile	250 ul	8	12	40
250-008-EZ-S	Sterile	250 ul	8	12	40
250-008-EZ-FS	Sterile, Filter Tip	(pending)	8	12	40

096-A-01-EZL-SL-ESP



96

DISPOSABLE

Recommended tips for 2 - 125 ul volumes

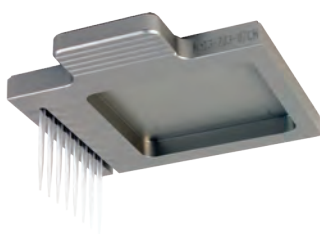
Product Number	Description	Max Vol	Tips / Rack	Racks / Case
125-096-EZ-NS	Non-Sterile	125 ul	96	40
125-096-EZ-S	Sterile	125 ul	96	40

Recommended tips for 2 - 50 ul volumes

Product Number	Description	Max Vol	Tips / Rack	Racks / Case
050-096-EZ-NS	Non-Sterile	50 ul	96	40
050-096-EZ-S	Sterile	50 ul	96	40

- Recommended for volume range 2-125 ul
- The high-volume pipettor may give acceptable results below 2 ul; a low-volume pipettor model is recommended for best performance at < 2ul.
- EZ-Load Head - no tools required
- Pipette to 96 labware
- Pipette to 384 labware using the iP Indexer 384 supplied with 96 channel i-Pipette models
- **CAUTION:** The maximum volume of this tip is much lower than the pipettor plunger capacity. When using this head, the method must be set up correctly to prevent aspiration of liquid beyond the maximum volume of the tip in order to prevent undesired flooding of the pipettor mechanism.

096-A-01-EZL-SC



8

DISPOSABLE

SERIAL DILUTION

Recommended tips for 2 - 125 ul volumes

Product Number	Description	Max Vol	Tips / Strip	Strips / Rack	Racks / Case
125-008-EZ-NS	Non-Sterile	125 ul	8	12	40
125-008-EZ-S	Sterile	125 ul	8	12	40

Recommended tips for 2 - 50 ul volumes

Product Number	Description	Max Vol	Tips / Strip	Strips / Rack	Racks / Case
050-008-EZ-NS	Non-Sterile	50 ul	8	12	40
050-008-EZ-S	Sterile	50 ul	8	12	40

- Recommended for volume range 2-125 ul
- The high-volume pipettor may give acceptable results below 2 ul; a low-volume pipettor model is recommended for best performance at < 2ul.
- EZ-Load Head - no tools required
- Serial Dilution by COLUMN
- Pipette to 96 labware
- For use with i-Pipette models equipped with manual or motorized serial dilution shuttle
- **CAUTION:** The maximum volume of this tip is much lower than the pipettor plunger capacity. When using this head, the method must be set up correctly to prevent aspiration of liquid beyond the maximum volume of the tip in order to prevent undesired flooding of the pipettor mechanism.

096-A-01-EZL-SL-ESP



96

DISPOSABLE

Recommended tips for 1 - 125 ul volumes

Product Number	Description	Max Vol	Tips / Rack	Racks / Case
125-096-EZ-NS	Non-Sterile	125 ul	96	40
125-096-EZ-S	Sterile	125 ul	96	40

Recommended tips for 0.5 - 50 ul volumes

Product Number	Description	Max Vol	Tips / Rack	Racks / Case
050-096-EZ-NS	Non-Sterile	50 ul	96	40
050-096-EZ-S	Sterile	50 ul	96	40

- Recommended for volume range 0.5-125 ul
- EZ-Load Head - no tools required
- Pipette to 96 labware
- Pipette to 384 labware using the iP Indexer 384 supplied with 96 channel i-Pipette models
- When pipetting 1 ul and below the pipetting method will be the key factor for best precision, please contact Apricot Designs if advice is needed

Recommended tips for 0.5 - 15 ul volumes

Product Number	Description	Max Vol	Tips / Rack	Racks / Case
015-096-EZ-NS	Non-Sterile	15 ul	96	40
015-096-EZ-S	Sterile	15 ul	96	40

096-A-01-EZL-SC



8

DISPOSABLE

SERIAL DILUTION

Recommended tips for 1 - 125 ul volumes

Product Number	Description	Max Vol	Tips / Strip	Strips / Rack	Racks / Case
125-008-EZ-NS	Non-Sterile	125 ul	8	12	20
125-008-EZ-S	Sterile	125 ul	8	12	20

Recommended tips for 0.5 - 50 ul volumes

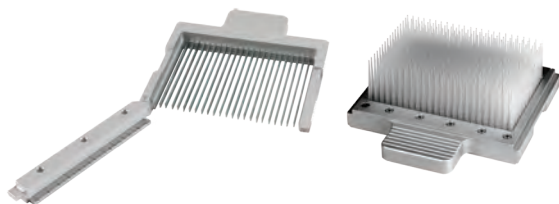
Product Number	Description	Max Vol	Tips / Strip	Strips / Rack	Racks / Case
050-008-EZ-NS	Non-Sterile	50 ul	8	12	20
050-008-EZ-S	Sterile	50 ul	8	12	20

- Recommended for volume range 0.5-125 ul
- EZ-Load Head - no tools required
- Serial Dilution by COLUMN
- Pipette to 96 labware
- For use with i-Pipette models equipped with manual or motorized serial dilution shuttle

Recommended tips for 0.5 - 25 ul volumes

Product Number	Description	Max Vol	Tips / Strip	Strips / Rack	Racks / Case
015-008-EZ-NS	Non-Sterile	15 ul	8	12	20
015-008-EZ-S	Sterile	15 ul	8	12	20

384-A-01-EZL-SL



384

DISPOSABLE

Recommended tips for 1 - 125 ul volumes

Product Number	Description	Max Vol	Tips / Rack	Racks / Case
125-384-EZ-NS	Non-Sterile	125 ul	384	20
125-384-EZ-S	Sterile	125 ul	384	20

Recommended tips for 0.5 - 50 ul volumes

Product Number	Description	Max Vol	Tips / Rack	Racks / Case
050-384-EZ-NS	Non-Sterile	50 ul	384	20
050-384-EZ-S	Sterile	50 ul	384	20

- **Recommended for volume range 0.5-125 ul**
- EZ-Load Head - no tools required
- Pipette to 384 labware
- When pipetting 1 ul and below the pipetting method will be the key factor for best precision, please contact Apricot Designs if advice is needed

Recommended tips for 0.5 - 15 ul volumes

Product Number	Description	Max Vol	Tips / Rack	Racks / Case
015-384-EZ-NS	Non-Sterile	15 ul	384	20
015-384SZ-S	Sterile	15 ul	384	20

384-A-01-EZL-SL-096



96

DISPOSABLE

Recommended tips for 10 - 125 ul volumes

Product Number	Description	Max Vol	Tips / Rack	Racks / Case
125-096-EZ-NS	Non-Sterile	125 ul	96	40
125-096-EZ-S	Sterile	125 ul	96	40

Recommended tips for 1 - 50 ul volumes

Product Number	Description	Max Vol	Tips / Rack	Racks / Case
050-096-EZ-NS	Non-Sterile	50 ul	96	40
050-096-EZ-S	Sterile	50 ul	96	40

- **Recommended for volume range 0.5-125 ul**
- EZ-Load Head - no tools required
- "Offset" head allows 384 channel pipettor to work with 96 well plates
- Pipette to 96 labware using the iP Indexer 96 supplied with 384 channel i-Pipette models
- When pipetting 1 ul and below the pipetting method will be the key factor for best precision, please contact Apricot Designs if advice is needed

Recommended tips for 0.5 - 15 ul volumes

Product Number	Description	Max Vol	Tips / Rack	Racks / Case
015-096-EZ-NS	Non-Sterile	15 ul	96	40
015-096-EZ-S	Sterile	15 ul	96	40

384-A-01-EZL-SC



16

DISPOSABLE

SERIAL DILUTION

Recommended tips for 1 - 125 ul volumes

Product Number	Description	Max Vol	Tips / Strip	Strips / Rack	Racks / Case
125-016-EZ-NS	Non-Sterile	125 ul	16	12	20
125-016-EZ-S	Sterile	125 ul	16	12	20

Recommended tips for 0.5 - 50 ul volumes

Product Number	Description	Max Vol	Tips / Strip	Strips / Rack	Racks / Case
050-016-EZ-NS	Non-Sterile	50 ul	16	12	20
050-016-EZ-S	Sterile	50 ul	16	12	20

- Recommended for volume range 0.05-125 ul
- EZ-Load Head - no tools required
- Serial Dilution by COLUMN
- Pipette to 384 labware
- For use with i-Pipette models equipped with manual or motorized serial dilution shuttle

Recommended tips for 0.5 - 15 ul volumes

Product Number	Description	Max Vol	Tips / Strip	Strips / Rack	Racks / Case
015-016-EZ-NS	Non-Sterile	15 ul	16	12	20
015-016-EZ-S	Sterile	15 ul	16	12	20

384-A-01-096-EZL-SC



8

DISPOSABLE

SERIAL DILUTION

Recommended tips for 1 - 125 ul volumes

Product Number	Description	Max Vol	Tips / Strip	Strips / Rack	Racks / Case
125-008-EZ-NS	Non-Sterile	125 ul	8	12	20
125-008-EZ-S	Sterile	125 ul	8	12	20

Recommended tips for 0.5 - 50 ul volumes

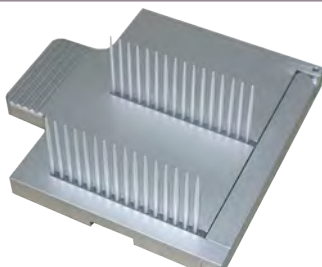
Product Number	Description	Max Vol	Tips / Strip	Strips / Rack	Racks / Case
050-008-EZ-NS	Non-Sterile	50 ul	8	12	20
050-008-EZ-S	Sterile	50 ul	8	12	20

- Recommended for volume range 0.5-125 ul
- EZ-Load Head - no tools required
- Serial Dilution by COLUMN
- Pipette to 96 labware
- "Offset" head allows 384 channel pipettor to work with 96 well plates
- For use with i-Pipette models equipped with manual or motorized serial dilution shuttle

Recommended tips for 0.5 - 15 ul volumes

Product Number	Description	Max Vol	Tips / Strip	Strips / Rack	Racks / Case
015-008-EZ-NS	Non-Sterile	15 ul	8	12	20
015-008-EZ-S	Sterile	15 ul	8	12	20

384-A-01-EZL-SC-13



16

DISPOSABLE

SERIAL DILUTION

- Recommended for volume range 0.5-125 ul
- EZ-Load Head - no tools required
- Serial Dilution by COLUMN x2, Starting on columns 1 & 13
- Pipette to 384 labware
- For use with i-Pipette models equipped with manual or motorized serial dilution shuttle

Recommended tips for 1 - 125 ul volumes

Product Number	Description	Max Vol	Tips / Strip	Strips / Rack	Racks / Case
125-016-EZ-NS	Non-Sterile	125 ul	16	12	20
125-016-EZ-S	Sterile	125 ul	16	12	20

Recommended tips for 0.5 - 15 ul volumes

Product Number	Description	Max Vol	Tips / Strip	Strips / Rack	Racks / Case
015-016-EZ-NS	Non-Sterile	15 ul	16	12	20
015-016-EZ-S	Sterile	15 ul	16	12	20

Recommended tips for 0.5 - 50 ul volumes

Product Number	Description	Max Vol	Tips / Strip	Strips / Rack	Racks / Case
050-016-EZ-NS	Non-Sterile	50 ul	16	12	20
050-016-EZ-S	Sterile	50 ul	16	12	20

096-A-01-EZL-SL-550



96

DISPOSABLE

- Recommended for volume range 2-550 ul
- EZ-Load Head - no tools required
- Pipette to 96 labware
- Pipette to 384 labware; the PP will automatically index the head to 4 quadrants

Recommended tips for 5 - 550 ul volumes

Product Number	Description	Max Vol	Tips / Rack	Racks / Case
550-096-EZ-NS	Non-Sterile	550 ul	96	40
550-096-EZ-S	Sterile	550 ul	96	40
550-096-EZ-FS	Sterile, Filter Tip	400 ul	96	40

Recommended tips for 2 - 250 ul volumes

Product Number	Description	Max Vol	Tips / Rack	Racks / Case
250-096-EZ-NS	Non-Sterile	250 ul	96	40
250-096-EZ-S	Sterile	250 ul	96	40
250-096-EZ-FS	Sterile, Filter Tip	(pending)	96	40

096-A-01-EZL-SL-ESP



96

DISPOSABLE

- Recommended for volume range 2-125 ul
- The high-volume pipettor may give acceptable results below 2 ul; a low-volume pipettor model is recommended for best performance at < 2ul.
- EZ-Load Head - no tools required
- Pipette to 96 labware
- Pipette to 384 labware using the iP Indexer 384 supplied with 96 channel i-Pipette models
- **CAUTION:** The maximum volume of this tip is much lower than the pipettor plunger capacity. When using this head, the method must be set up correctly to prevent aspiration of liquid beyond the maximum volume of the tip in order to prevent undesired flooding of the pipettor mechanism.

Recommended tips for 2 - 125 ul volumes

Product Number	Description	Max Vol	Tips / Rack	Racks / Case
125-096-EZ-NS	Non-Sterile	125 ul	96	40
125-096-EZ-S	Sterile	125 ul	96	40

Recommended tips for 2 - 50 ul volumes

Product Number	Description	Max Vol	Tips / Rack	Racks / Case
050-096-EZ-NS	Non-Sterile	50 ul	96	40
050-096-EZ-S	Sterile	50 ul	96	40

Recommended tips for 2 - 15 ul volumes

Product Number	Description	Max Vol	Tips / Rack	Racks / Case
015-096-EZ-NS	Non-Sterile	15 ul	96	40
015-096-EZ-S	Sterile	15 ul	96	40

096-A-01-EZL-550-SC


8
DISPOSABLE
SERIAL DILUTION

- **Recommended for volume range 2-550 ul**
- EZ-Load Head - no tools required
- Serial Dilution by COLUMN
- Pipette to 96 labware
- The PP will automatically perform the serial dilution operation using the programmed method

Recommended tips for 5 - 550 ul volumes

Product Number	Description	Max Vol	Tips / Strip	Strips / Rack	Racks / Case
550-008-EZ-NS	Non-Sterile	550 ul	8	12	40
550-008-EZ-S	Sterile	550 ul	8	12	40
550-008-EZ-FS	Sterile, Filter Tip	400 ul	8	12	40

Recommended tips for 2 - 250 ul volumes

Product Number	Description	Max Vol	Tips / Strip	Strips / Rack	Racks / Case
250-008-EZ-NS	Non-Sterile	250 ul	8	12	40
250-008-EZ-S	Sterile	250 ul	8	12	40
250-008-EZ-FS	Sterile, Filter Tip	(pending)	8	12	40

096-A-01-EZL-550-SR


12
DISPOSABLE
SERIAL DILUTION

- **Recommended for volume range 2-550 ul**
- EZ-Load Head - no tools required
- Serial Dilution by ROW
- Pipette to 96 labware
- The PP will automatically perform the serial dilution operation using the programmed method

Recommended tips for 5 - 550 ul volumes

Product Number	Description	Max Vol	Tips / Strip	Strips / Rack	Racks / Case
550-012-EZ-NS	Non-Sterile	550 ul	12	8	40
550-012-EZ-S	Sterile	550 ul	12	8	40
550-012-EZ-FS	Sterile, Filter Tip	400 ul	12	8	40

Recommended tips for 2- 250 ul volumes

Product Number	Description	Max Vol	Tips / Strip	Strips / Rack	Racks / Case
250-012-EZ-NS	Non-Sterile	250 ul	12	8	40
250-012-EZ-S	Sterile	250 ul	12	8	40
250-012-EZ-FS	Sterile, Filter Tip	(pending)	12	8	40

096-A-01-EZL-SC



8

DISPOSABLE

SERIAL DILUTION

Recommended tips for 2 - 125 ul volumes

Product Number	Description	Max Vol	Tips / Strip	Strips / Rack	Racks / Case
125-008-EZ-NS	Non-Sterile	125 ul	8	12	20
125-008-EZ-S	Sterile	125 ul	8	12	20

Recommended tips for 2 - 50 ul volumes

Product Number	Description	Max Vol	Tips / Strip	Strips / Rack	Racks / Case
050-008-EZ-NS	Non-Sterile	50 ul	8	12	20
050-008-EZ-S	Sterile	50 ul	8	12	20

- Recommended for volume range 2-125 ul
- The high-volume pipettor may give acceptable results below 2 ul; a low-volume pipettor model is recommended for best performance at < 2ul.
- EZ-Load Head - no tools required
- Serial Dilution by COLUMN
- Pipette to 96 labware
- The PP will automatically perform the serial dilution operation using the programmed method
- **CAUTION:** The maximum volume of this tip is much lower than the pipettor plunger capacity. When using this head, the method must be set up correctly to prevent aspiration of liquid beyond the maximum volume of the tip in order to prevent undesired flooding of the pipettor mechanism.

Recommended tips for 2 - 25 ul volumes

Product Number	Description	Max Vol	Tips / Strip	Strips / Rack	Racks / Case
015-008-EZ-NS	Non-Sterile	15 ul	8	12	20
015-008-EZ-S	Sterile	15 ul	8	12	20

096-A-01-EZL-SR



12

DISPOSABLE

SERIAL DILUTION

Recommended tips for 2 - 125 ul volumes

Product Number	Description	Max Vol	Tips / Strip	Strips / Rack	Racks / Case
125-012-EZ-NS	Non-Sterile	125 ul	12	8	20
125-012-EZ-S	Sterile	125 ul	12	8	20

Recommended tips for 2 - 50 ul volumes

Product Number	Description	Max Vol	Tips / Strip	Strips / Rack	Racks / Case
050-012-EZ-NS	Non-Sterile	50 ul	12	8	20
050-012-EZ-S	Sterile	50 ul	12	8	20

- Recommended for volume range 2-125 ul
- The high-volume pipettor may give acceptable results below 2 ul; a low-volume pipettor model is recommended for best performance at < 2ul.
- EZ-Load Head - no tools required
- Serial Dilution by ROW
- Pipette to 96 labware
- The PP will automatically perform the serial dilution operation using the programmed method
- **CAUTION:** The maximum volume of this tip is much lower than the pipettor plunger capacity. When using this head, the method must be set up correctly to prevent aspiration of liquid beyond the maximum volume of the tip in order to prevent undesired flooding of the pipettor mechanism.

Recommended tips for 2 - 15 ul volumes

Product Number	Description	Max Vol	Tips / Strip	Strips / Rack	Racks / Case
015-012-EZ-NS	Non-Sterile	15 ul	12	8	20
015-012-EZ-S	Sterile	15 ul	12	8	20

096-A-02T

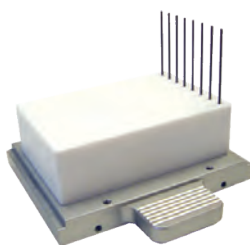


96

FIXED

- Recommended for volume range 5-550 ul
- Maximum volume 550 ul
- Requires Wash Manifold 550-A-10N & Tubing Set 550-A-18
- Pipette to 96 labware
- Pipette to 384 labware; the PP will automatically index the head to 4 quadrants

096-A-02T-SC-M



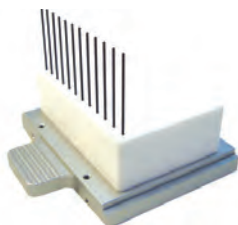
8

FIXED

SERIAL DILUTION

- Recommended for volume range 5-550 ul
- Maximum volume 550 ul
- Requires Wash Manifold 550-A-10-SC
- Serial Dilution by COLUMN
- Pipette to 96 labware
- The PP will automatically perform the serial dilution operation using the programmed method

096-A-02T-SR



12

FIXED

SERIAL DILUTION

- Recommended for volume range 5-550 ul
- Maximum volume 550 ul
- Requires Wash Manifold 550-A-10-SR
- Serial Dilution by COLUMN
- Pipette to 96 labware
- The PP will automatically perform the serial dilution operation using the programmed method

096-A-01-EZL-SL-550



24

DISPOSABLE

- Special Head for Corning HTS Transwell Plates
- Recommended for volume range 2-500 ul
- EZ-Load Head - combined with Tip Collar and Adaptor Plate
- User loads 24 tips manually into Tip Collar

Recommended tips for 5 - 500 ul volumes

Product Number	Description	Max Vol	Tips / Rack	Racks / Case
550-096-EZ-NS	Non-Sterile	550 ul	96	40
550-096-EZ-S	Sterile	550 ul	96	40
550-096-EZ-FS	Sterile, Filter Tip	400 ul	96	40

Recommended tips for 2 - 250 ul volumes

Product Number	Description	Max Vol	Tips / Rack	Racks / Case
250-096-EZ-NS	Non-Sterile	250 ul	96	40
250-096-EZ-S	Sterile	250 ul	96	40
250-096-EZ-FS	Sterile, Filter Tip	(pending)	96	40

096-A-01-EZL-SL-ESP


96
DISPOSABLE

- **Recommended for volume range 0.5-125 ul**
- EZ-Load Head - no tools required
- Pipette to 96 labware
- Pipette to 384 labware; the PP will automatically index the head to 4 quadrants
- When pipetting 1 ul and below the pipetting method will be the key factor for best precision, please contact Apricot Designs if advice is needed

Recommended tips for 1 - 125 ul volumes

Product Number	Description	Max Vol	Tips / Rack	Racks / Case
125-096-EZ-NS	Non-Sterile	125 ul	96	40
125-096-EZ-S	Sterile	125 ul	96	40

Recommended tips for 0.5 - 50 ul volumes

Product Number	Description	Max Vol	Tips / Rack	Racks / Case
050-096-EZ-NS	Non-Sterile	50 ul	96	40
050-096-EZ-S	Sterile	50 ul	96	40

Recommended tips for 0.5 - 15 ul volumes

Product Number	Description	Max Vol	Tips / Rack	Racks / Case
015-096-EZ-NS	Non-Sterile	15 ul	96	40
015-096-EZ-S	Sterile	15 ul	96	40

096-A-01-EZL-SC


8
DISPOSABLE
SERIAL DILUTION

- **Recommended for volume range 0.5-125 ul**
- EZ-Load Head - no tools required
- Serial Dilution by COLUMN
- Pipette to 96 labware
- The PP will automatically perform the serial dilution operation using the programmed method

Recommended tips for 1 - 125 ul volumes

Product Number	Description	Max Vol	Tips / Strip	Strips / Rack	Racks / Case
125-008-EZ-NS	Non-Sterile	125 ul	8	12	20
125-008-EZ-S	Sterile	125 ul	8	12	20

Recommended tips for 0.5 - 50 ul volumes

Product Number	Description	Max Vol	Tips / Strip	Strips / Rack	Racks / Case
050-008-EZ-NS	Non-Sterile	50 ul	8	12	20
050-008-EZ-S	Sterile	50 ul	8	12	20

Recommended tips for 0.5 - 25 ul volumes

Product Number	Description	Max Vol	Tips / Strip	Strips / Rack	Racks / Case
015-008-EZ-NS	Non-Sterile	15 ul	8	12	20
015-008-EZ-S	Sterile	15 ul	8	12	20

096-A-01-EZL-SR



12

DISPOSABLE

SERIAL DILUTION

- Recommended for volume range 0.5-125 ul
- EZ-Load Head - no tools required
- Serial Dilution by ROW
- Pipette to 96 labware
- The PP will automatically perform the serial dilution operation using the programmed method

Recommended tips for 1 - 125 ul volumes

Product Number	Description	Max Vol	Tips / Strip	Strips / Rack	Racks / Case
125-012-EZ-NS	Non-Sterile	125 ul	12	8	20
125-012-EZ-S	Sterile	125 ul	12	8	20

Recommended tips for 0.5 - 15 ul volumes

Product Number	Description	Max Vol	Tips / Strip	Strips / Rack	Racks / Case
015-012-EZ-NS	Non-Sterile	15 ul	12	8	20
015-012-EZ-S	Sterile	15 ul	12	8	20

Recommended tips for 0.5 - 50 ul volumes

Product Number	Description	Max Vol	Tips / Strip	Strips / Rack	Racks / Case
050-012-EZ-NS	Non-Sterile	50 ul	12	8	20
050-012-EZ-S	Sterile	50 ul	12	8	20

096-A-02T-125



96

FIXED

- Recommended for volume range 1-125 ul
- Maximum volume 125 ul
- Requires Wash Manifold 550-A-10N & Tubing Set 550-A-18
- Pipette to 96 labware
- Pipette to 384 labware; the PP will automatically index the head to 4 quadrants

096-A-02T-25

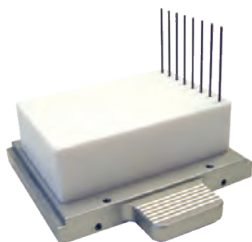


96

FIXED

- Recommended for volume range 0.5-25 ul
- Maximum volume 25 ul
- Requires Wash Manifold 550-A-10N & Tubing Set 550-A-18
- Pipette to 96 labware
- Pipette to 384 labware; the PP will automatically index the head to 4 quadrants
- When pipetting 1 ul and below the pipetting method will be the key factor for best precision, please contact Apricot Designs if advice is needed

096-A-02T-125-SC-M



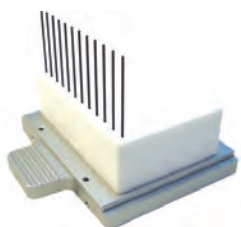
8

FIXED

SERIAL DILUTION

- Recommended for volume range 1-125 ul
- Maximum volume 125 ul
- Requires Wash Manifold 550-A-10-SC
- Serial Dilution by COLUMN
- Pipette to 96 labware
- The PP will automatically perform the serial dilution operation using the programmed method

096-A-02T-125-SR



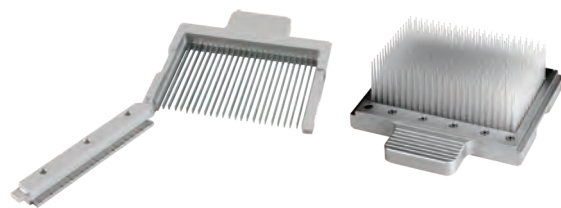
12

FIXED

SERIAL DILUTION

- Recommended for volume range 1-125 ul
- Maximum volume 125 ul
- Requires Wash Manifold 550-A-10-SR
- Serial Dilution by COLUMN
- Pipette to 96 labware
- The PP will automatically perform the serial dilution operation using the programmed method

384-A-01-EZL-SL


384
DISPOSABLE

- **Recommended for volume range 0.5-125 ul**
- EZ-Load Head - no tools required
- Pipette to 384 labware
- Pipette to 1536 labware; the PP will automatically index the head to 4 quadrants
- When pipetting 1 ul and below the pipetting method will be the key factor for best precision, please contact Apricot Designs if advice is needed

Recommended tips for 1 - 125 ul volumes

Product Number	Description	Max Vol	Tips / Rack	Racks / Case
125-384-EZ-NS	Non-Sterile	125 ul	384	20
125-384-EZ-S	Sterile	125 ul	384	20

Recommended tips for 0.5 - 50 ul volumes

Product Number	Description	Max Vol	Tips / Rack	Racks / Case
050-384-EZ-NS	Non-Sterile	50 ul	384	20
050-384-EZ-S	Sterile	50 ul	384	20

Recommended tips for 0.5 - 15 ul volumes

Product Number	Description	Max Vol	Tips / Rack	Racks / Case
015-384-EZ-NS	Non-Sterile	15 ul	384	20
015-384-EZ-S	Sterile	15 ul	384	20

384-A-01-EZL-SL-096


96
DISPOSABLE

- **Recommended for volume range 0.5-125 ul**
- EZ-Load Head - no tools required
- "Offset" head allows 384 channel pipettor to work with 96 well plates
- Pipette to 96 labware
- When pipetting 1 ul and below the pipetting method will be the key factor for best precision, please contact Apricot Designs if advice is needed

Recommended tips for 10 - 125 ul volumes

Product Number	Description	Max Vol	Tips / Rack	Racks / Case
125-096-EZ-NS	Non-Sterile	125 ul	96	40
125-096-EZ-S	Sterile	125 ul	96	40

Recommended tips for 1 - 50 ul volumes

Product Number	Description	Max Vol	Tips / Rack	Racks / Case
050-096-EZ-NS	Non-Sterile	50 ul	96	40
050-096-EZ-S	Sterile	50 ul	96	40

Recommended tips for 0.5 - 15 ul volumes

Product Number	Description	Max Vol	Tips / Rack	Racks / Case
015-096-EZ-NS	Non-Sterile	15 ul	96	40
015-096-EZ-S	Sterile	15 ul	96	40

384-A-01-EZL-SC



16

DISPOSABLE

SERIAL DILUTION

- Recommended for volume range 0.5-125 ul
- EZ-Load Head - no tools required
- Serial Dilution by COLUMN
- Pipette to 384 labware
- The PP will automatically perform the serial dilution operation using the programmed method

Recommended tips for 1 - 125 ul volumes

Product Number	Description	Max Vol	Tips / Strip	Strips / Rack	Racks / Case
125-016-EZ-NS	Non-Sterile	125 ul	16	12	20
125-016-EZ-S	Sterile	125 ul	16	12	20

Recommended tips for 0.5 - 50 ul volumes

Product Number	Description	Max Vol	Tips / Strip	Strips / Rack	Racks / Case
050-016-EZ-NS	Non-Sterile	50 ul	16	12	20
050-016-EZ-S	Sterile	50 ul	16	12	20

Recommended tips for 0.5 - 15 ul volumes

Product Number	Description	Max Vol	Tips / Strip	Strips / Rack	Racks / Case
015-016-EZ-NS	Non-Sterile	15 ul	16	12	20
015-016-EZ-S	Sterile	15 ul	16	12	20

384-A-01-EZL-SR



24

DISPOSABLE

SERIAL DILUTION

- Recommended for volume range 0.5-125 ul
- EZ-Load Head - no tools required
- Serial Dilution by ROW
- Pipette to 384 labware
- The PP will automatically perform the serial dilution operation using the programmed method

Recommended tips for 1 - 125 ul volumes

Product Number	Description	Max Vol	Tips / Strip	Strips / Rack	Racks / Case
125-024-EZ-NS	Non-Sterile	125 ul	24	8	20
125-024-EZ-S	Sterile	125 ul	24	8	20

Recommended tips for 0.5 - 50 ul volumes

Product Number	Description	Max Vol	Tips / Strip	Strips / Rack	Racks / Case
050-024-EZ-NS	Non-Sterile	50 ul	24	8	20
050-024-EZ-S	Sterile	50 ul	24	8	20

Recommended tips for 0.5 - 15 ul volumes

Product Number	Description	Max Vol	Tips / Strip	Strips / Rack	Racks / Case
015-024-EZ-NS	Non-Sterile	15 ul	24	8	20
015-024-EZ-S	Sterile	15 ul	24	8	20

384-A-01-096-EZL-SC


8
DISPOSABLE
SERIAL DILUTION

- **Recommended for volume range 0.5-125 ul**
- EZ-Load Head - no tools required
- Serial Dilution by COLUMN
- Pipette to 96 labware
- "Offset" head allows 384 channel pipettor to work with 96 well plates
- The PP will automatically perform the serial dilution operation using the programmed method

Recommended tips for 1 - 125 ul volumes

Product Number	Description	Max Vol	Tips / Strip	Strips / Rack	Racks / Case
125-008-EZ-NS	Non-Sterile	125 ul	8	12	20
125-008-EZ-S	Sterile	125 ul	8	12	20

Recommended tips for 0.5 - 50 ul volumes

Product Number	Description	Max Vol	Tips / Strip	Strips / Rack	Racks / Case
050-008-EZ-NS	Non-Sterile	50 ul	8	12	20
050-008-EZ-S	Sterile	50 ul	8	12	20

Recommended tips for 0.5 - 15 ul volumes

Product Number	Description	Max Vol	Tips / Strip	Strips / Rack	Racks / Case
015-008-EZ-NS	Non-Sterile	15 ul	8	12	20
015-008-EZ-S	Sterile	15 ul	8	12	20

384-A-01-096-EZL-SR


12
DISPOSABLE
SERIAL DILUTION

- **Recommended for volume range 0.5-125 ul**
- EZ-Load Head - no tools required
- Serial Dilution by ROW
- Pipette to 96 labware
- "Offset" head allows 384 channel pipettor to work with 96 well plates
- The PP will automatically perform the serial dilution operation using the programmed method

Recommended tips for 10 - 125 ul volumes

Product Number	Description	Max Vol	Tips / Strip	Strips / Rack	Racks / Case
125-012-EZ-NS	Non-Sterile	125 ul	12	8	20
125-012-EZ-S	Sterile	125 ul	12	8	20

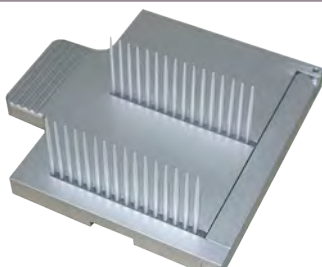
Recommended tips for 0.5 - 50 ul volumes

Product Number	Description	Max Vol	Tips / Strip	Strips / Rack	Racks / Case
050-012-EZ-NS	Non-Sterile	50 ul	12	8	20
050-012-EZ-S	Sterile	50 ul	12	8	20

Recommended tips for 0.5 - 15 ul volumes

Product Number	Description	Max Vol	Tips / Strip	Strips / Rack	Racks / Case
015-012-EZ-NS	Non-Sterile	15 ul	12	8	20
015-012-EZ-S	Sterile	15 ul	12	8	20

384-A-01-EZL-SC-13



16

DISPOSABLE

SERIAL DILUTION

- Recommended for volume range 0.5-125 ul
- EZ-Load Head - no tools required
- Serial Dilution by COLUMN x2, Starting on columns 1 & 13
- Pipette to 384 labware
- For use with i-Pipette models equipped with manual or motorized serial dilution shuttle

Recommended tips for 1 - 125 ul volumes

Product Number	Description	Max Vol	Tips / Strip	Strips / Rack	Racks / Case
125-016-EZ-NS	Non-Sterile	125 ul	16	12	20
125-016-EZ-S	Sterile	125 ul	16	12	20

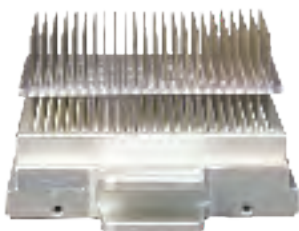
Recommended tips for 0.5 - 15 ul volumes

Product Number	Description	Max Vol	Tips / Strip	Strips / Rack	Racks / Case
015-016-EZ-NS	Non-Sterile	15 ul	16	12	20
015-016-EZ-S	Sterile	15 ul	16	12	20

Recommended tips for 0.5 - 50 ul volumes

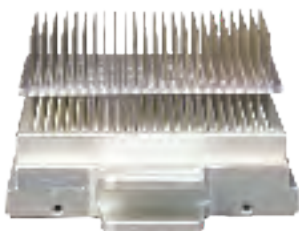
Product Number	Description	Max Vol	Tips / Strip	Strips / Rack	Racks / Case
050-016-EZ-NS	Non-Sterile	50 ul	16	12	20
050-016-EZ-S	Sterile	50 ul	16	12	20

125-A-01-023


384
FIXED

- **Recommended for volume range 1-125 ul**
- **Maximum volume 125 ul**
- Requires Wash Manifold 125-A-09-384
- Pipette to 384 labware
- When pipetting 1 ul and below the pipetting method will be the key factor for best precision, please contact Apricot Designs if advice is needed

125-A-01-025U


384
FIXED

- **Recommended for volume range 0.5-25 ul**
- **Maximum volume 25 ul**
- Requires Wash Manifold 125-A-09-384
- Pipette to 384 labware
- When pipetting 1 ul and below the pipetting method will be the key factor for best precision, please contact Apricot Designs if advice is needed

125-A-03-023


96
FIXED

- **Recommended for volume range 1-125 ul**
- **Maximum volume 125 ul**
- Requires Wash Manifold 125-A-06-096
- Pipette to 96 labware
- "Offset" head allows 384 channel pipettor to work with 96 well plates

125-A-03-023-25U


96
FIXED

- **Recommended for volume range 0.5-25 ul**
- **Maximum volume 25 ul**
- Requires Wash Manifold 125-A-06-096
- Pipette to 96 labware
- "Offset" head allows 384 channel pipettor to work with 96 well plates
- When pipetting 1 ul and below the pipetting method will be the key factor for best precision, please contact Apricot Designs if advice is needed

125-A-01-023



16

FIXED

SERIAL DILUTION

- Recommended for volume range 1-125 ul
- Maximum volume 125 ul
- Requires Wash Manifold 125-A-09-384-SC
- Serial Dilution by COLUMN
- Pipette to 384 labware
- The PP will automatically perform the serial dilution operation using the programmed method

125-A-01-025U



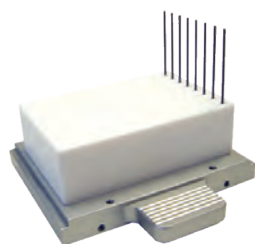
24

FIXED

SERIAL DILUTION

- Recommended for volume range 1-125 ul
- Maximum volume 125 ul
- Requires Wash Manifold 125-A-09-384-SR
- Serial Dilution by ROW
- Pipette to 384 labware
- The PP will automatically perform the serial dilution operation using the programmed method

125-A-03-023



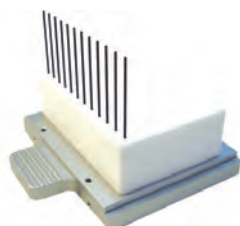
8

FIXED

SERIAL DILUTION

- Recommended for volume range 1-125 ul
- Maximum volume 125 ul
- Requires Wash Manifold 125-A-09-096-SC
- Serial Dilution by COLUMN
- Pipette to 96 labware
- "Offset" head allows 384 channel pipettor to work with 96 well plates
- The PP will automatically perform the serial dilution operation using the programmed method

125-A-03-023-25U



12

FIXED

SERIAL DILUTION

- Recommended for volume range 1-125 ul
- Maximum volume 125 ul
- Requires Wash Manifold 125-A-09-096-SR
- Serial Dilution by ROW
- Pipette to 96 labware
- "Offset" head allows 384 channel pipettor to work with 96 well plates
- The PP will automatically perform the serial dilution operation using the programmed method

TPS24-A-01-ESP


16/24
DISPOSABLE
SERIAL DILUTION

Recommended tips for 1 - 125 ul volumes

Product Number	Description	Max Vol	Tips / Rack	Racks / Case
125-384-AL-NS	Non-Sterile	125 ul	384	20
125-384-AL-S	Sterile	125 ul	384	20

Recommended tips for 0.5 - 50 ul volumes

Product Number	Description	Max Vol	Tips / Rack	Racks / Case
050-384-AL-NS	Non-Sterile	50 ul	384	20
050-384-AL-S	Sterile	50 ul	384	20

- **Recommended for volume range 1-125 ul**
- For serial dilution by ROW or columns for 384 labware
- The TPS-24 will load and unload tips automatically from the rack of 384 ESP tips
- The TPS-24 will load all 24 tips for ROW serial dilutions with 384 plates in the landscape orientation
- The TPS-24 will load the middle 16 tips for COLUMN serial dilutions with 384 plates in the portrait orientation

Recommended tips for 0.5 - 15 ul volumes

Product Number	Description	Max Vol	Tips / Rack	Racks / Case
015-384-AL-NS	Non-Sterile	15 ul	384	20
015-384-AL-S	Sterile	15 ul	384	20

TPS24-A-01-ESP-12


8/12
DISPOSABLE
SERIAL DILUTION

Recommended tips for 1 - 125 ul volumes

Product Number	Description	Max Vol	Tips / Rack	Racks / Case
125-384-AL-NS	Non-Sterile	125 ul	384	20
125-384-ESP-S	Sterile	125 ul	384	20

Recommended tips for 0.5 - 50 ul volumes

Product Number	Description	Max Vol	Tips / Rack	Racks / Case
050-384-AL-NS	Non-Sterile	50 ul	384	20
050-384-AL-S	Sterile	50 ul	384	20

- **Recommended for volume range 1-125 ul**
- For serial dilution by ROW or columns for 96 labware
- The TPS-24 will load and unload tips automatically from the rack of 384 ESP tips
- The TPS-24 will load all 12 tips for ROW serial dilutions with 96 plates in the landscape orientation
- The TPS-24 will load the middle 8 tips for COLUMN serial dilutions with 96 plates in the portrait orientation

Recommended tips for 0.5 - 15 ul volumes

Product Number	Description	Max Vol	Tips / Rack	Racks / Case
015-384-AL-NS	Non-Sterile	15 ul	384	20
015-384-AL-S	Sterile	15 ul	384	20

TPS24-A-03-125



24

FIXED

SERIAL DILUTION

- Recommended for volume range 1-125 ul
- Maximum volume 125 ul
- Pipette to 384 labware in landscape orientation
- Serial Dilution by ROW

TPS24-A-03-025



24

FIXED

SERIAL DILUTION

- Recommended for volume range 0.5-25 ul
- Maximum volume 25 ul
- Requires Wash Manifold 125-A-09-384
- Pipette to 384 labware in landscape orientation
- Serial Dilution by ROW

TPS24-A-04-125



16

FIXED

SERIAL DILUTION

- Recommended for volume range 1-125 ul
- Maximum volume 125 ul
- Requires Wash Manifold 125-A-06-096
- Pipette to 96 labware in portrait orientation
- Serial Dilution by COLUMN

TPS24-A-04-025



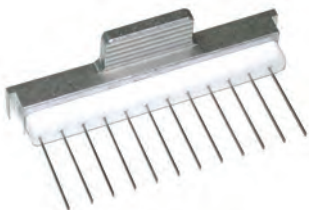
16

FIXED

SERIAL DILUTION

- Recommended for volume range 0.5-25 ul
- Maximum volume 25 ul
- Requires Wash Manifold 125-A-06-096
- Pipette to 96 labware in portrait orientation
- Serial Dilution by COLUMN

TPS24-A-05-125



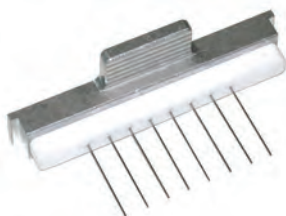
12

FIXED

SERIAL DILUTION

- Recommended for volume range 1-125 ul
- Maximum volume 125 ul
- Pipette to 96 labware in landscape orientation
- Serial Dilution by ROW

TPS24-A-06-125



8

FIXED

SERIAL DILUTION

- Recommended for volume range 1-125 ul
- Maximum volume 125 ul
- Pipette to 96 labware in portrait orientation
- Serial Dilution by COLUMN

TPS24-A-07-250



12

FIXED

SERIAL DILUTION

- Recommended for volume range 2-250 ul
- Maximum volume 250 ul
- Pipette to 96 labware in landscape orientation
- Serial Dilution by ROW

TPS24-A-08-250



8

FIXED

SERIAL DILUTION

- Recommended for volume range 2-250 ul
- Maximum volume 250 ul
- Pipette to 96 labware in portrait orientation
- Serial Dilution by COLUMN

096-A-01N


96
DISPOSABLE

- **Recommended for volume range 5-550 ul**
- The TPS-96 will load and unload tips automatically
- Pipette to 96 labware
- Pipette to 384 labware; the TPS-96 will automatically index the head to 4 quadrants

Recommended tips for 5 - 550 ul volumes

Product Number	Description	Max Vol	Tips / Rack	Racks / Case
550-096-AL-NS	Non-Sterile	550 ul	96	40
550-096-AL-S	Sterile	550 ul	96	40
550-096-AL-FS	Sterile, Filter Tip	400 ul	96	40

Recommended tips for 2 - 250 ul volumes

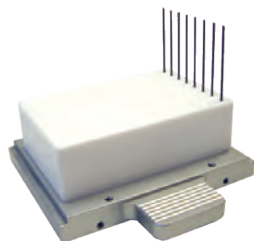
Product Number	Description	Max Vol	Tips / Rack	Racks / Case
250-096-AL-NS	Non-Sterile	250 ul	96	40
250-096-AL-S	Sterile	250 ul	96	40
250-096-AL-FS	Sterile, Filter Tip	200 ul	96	40

096-A-02T


96
FIXED

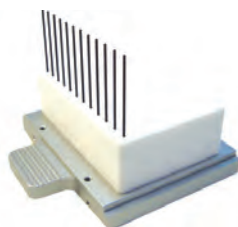
- **Recommended for volume range 5-550 ul**
- **Maximum volume 550 ul**
- Requires Wash Manifold 550-A-10N & Tubing Set 550-A-18
- Pipette to 96 labware
- Pipette to 384 labware; the PP will automatically index the head to 4 quadrants

096-A-02T-SC-M


8
FIXED
SERIAL DILUTION

- **Recommended for volume range 5-550 ul**
- **Maximum volume 550 ul**
- Requires Wash Manifold 550-A-10-SC
- Serial Dilution by COLUMN
- Pipette to 96 labware
- The PP will automatically perform the serial dilution operation using the programmed method

096-A-02T-SR


12
FIXED
SERIAL DILUTION

- **Recommended for volume range 5-550 ul**
- **Maximum volume 550 ul**
- Requires Wash Manifold 550-A-10-SR
- Serial Dilution by ROW
- Pipette to 96 labware
- The PP will automatically perform the serial dilution operation using the programmed method

TPS96L-A-01-C-ESP


96
DISPOSABLE
SERIAL DILUTION

Recommended tips for 1 - 125 ul volumes

Product Number	Description	Max Vol	Tips / Rack	Racks / Case
125-384-AL-NS	Non-Sterile	125 ul	384	20
125-384-AL-S	Sterile	125 ul	384	20

Recommended tips for 0.5 - 50 ul volumes

Product Number	Description	Max Vol	Tips / Rack	Racks / Case
050-384-AL-NS	Non-Sterile	50 ul	384	20
050-384-AL-S	Sterile	50 ul	384	20

- **Recommended for volume range 0.5-125 ul**
- When pipetting 1 ul and below the pipetting method will be the key factor for best precision, please contact Apricot Designs if advice is needed
- The TPS-96 will load and unload tips automatically from the rack of 384 ESP tips
- Pipette to 96 labware
- Pipette to 384 labware; the TPS-96 will automatically index the head to 4 quadrants
- This head will also automatically load and unload tips for serial dilution by row or column

Recommended tips for 0.5 - 15 ul volumes

Product Number	Description	Max Vol	Tips / Rack	Racks / Case
015-384-AL-NS	Non-Sterile	15 ul	384	20
015-384-AL-S	Sterile	15 ul	384	20

096-A-02T-125


96
FIXED

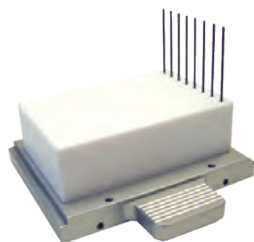
- **Recommended for volume range 1-125 ul**
- **Maximum volume 125 ul**
- Requires Wash Manifold 550-A-10N & Tubing Set 550-A-18
- Pipette to 96 labware
- Pipette to 384 labware; the PP will automatically index the head to 4 quadrants

096-A-02T-25


96
FIXED

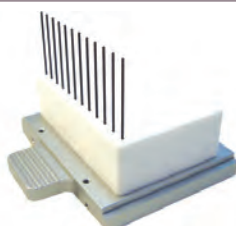
- **Recommended for volume range 0.5-25 ul**
- **Maximum volume 25 ul**
- Requires Wash Manifold 550-A-10N & Tubing Set 550-A-18
- Pipette to 96 labware
- Pipette to 384 labware; the PP will automatically index the head to 4 quadrants
- When pipetting 1 ul and below the pipetting method will be the key factor for best precision, please contact Apricot Designs if advice is needed

096-A-02T-SC-M


8
FIXED
SERIAL DILUTION

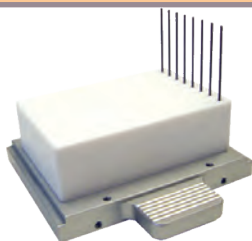
- **Recommended for volume range 5-550 ul**
- **Maximum volume 550 ul**
- Requires Wash Manifold 550-A-10-SC
- Serial Dilution by COLUMN
- Pipette to 96 labware
- The TPS-96 will automatically perform the serial dilution operation using the programmed method

096-A-02T-125-SR


12
FIXED
SERIAL DILUTION

- **Recommended for volume range 5-550 ul**
- **Maximum volume 550 ul**
- Requires Wash Manifold 550-A-10-SR
- Serial Dilution by ROW
- Pipette to 96 labware
- The TPS-96 will automatically perform the serial dilution operation using the programmed method

096-A-02T-125-SC-M


8
FIXED
SERIAL DILUTION

- **Recommended for volume range 1-125 ul**
- **Maximum volume 125 ul**
- Requires Wash Manifold 550-A-10-SC
- Serial Dilution by COLUMN
- Pipette to 96 labware
- The TPS-96 will automatically perform the serial dilution operation using the programmed method

096-A-02T-125-SR


12
FIXED
SERIAL DILUTION

- **Recommended for volume range 1-125 ul**
- **Maximum volume 125 ul**
- Requires Wash Manifold 550-A-10-SR
- Serial Dilution by ROW
- Pipette to 96 labware
- The TPS-96 will automatically perform the serial dilution operation using the programmed method

TPS384-A-01-C-ESP


384
DISPOSABLE
SERIAL DILUTION

• Recommended for volume range 0.5-125 ul

- The TPS-384 will load and unload tips automatically
- Pipette to 384 labware
- Pipette to 1536 labware; the TPS-384 will automatically index the head to 4 quadrants
- This head will also automatically load and unload tips for serial dilution by row or column
- When pipetting 1 ul and below the pipetting method will be the key factor for best precision, please contact Apricot Designs if advice is needed

Recommended tips for 1 - 125 ul volumes

Product Number	Description	Max Vol	Tips / Rack	Racks / Case
125-384-AL-NS	Non-Sterile	125 ul	384	20
125-384-AL-S	Sterile	125 ul	384	20

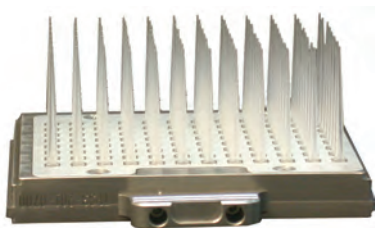
Recommended tips for 0.5 - 15 ul volumes

Product Number	Description	Max Vol	Tips / Rack	Racks / Case
015-384-AL-NS	Non-Sterile	15 ul	384	20
015-384-AL-S	Sterile	15 ul	384	20

Recommended tips for 0.5 - 50 ul volumes

Product Number	Description	Max Vol	Tips / Rack	Racks / Case
050-384-AL-NS	Non-Sterile	50 ul	384	20
050-384-AL-S	Sterile	50 ul	384	20

TPS384-A-01-C-096ESP


96
DISPOSABLE
SERIAL DILUTION

• Recommended for volume range 0.5-125 ul

- The TPS-384 will load and unload tips automatically from the rack of 384
- "Offset" head allows 384 channel pipettor to work with 96 well plates
- Pipette to 96 labware
- This head will also automatically load and unload tips for serial dilution by row or column
- When pipetting 1 ul and below the pipetting method will be the key factor for best precision, please contact Apricot Designs if advice is needed

Recommended tips for 1 - 125 ul volumes

Product Number	Description	Max Vol	Tips / Rack	Racks / Case
125-384-AL-NS	Non-Sterile	125 ul	384	20
125-384-AL-S	Sterile	125 ul	384	20

Recommended tips for 0.5 - 15 ul volumes

Product Number	Description	Max Vol	Tips / Rack	Racks / Case
015-384-AL-NS	Non-Sterile	15 ul	384	20
015-384-AL-S	Sterile	15 ul	384	20

Recommended tips for 0.5 - 50 ul volumes

Product Number	Description	Max Vol	Tips / Rack	Racks / Case
050-384-AL-NS	Non-Sterile	50 ul	384	20
050-384-AL-S	Sterile	50 ul	384	20

125-A-01-023



384

FIXED

- **Recommended for volume range 1-125 ul**
- **Maximum volume 125 ul**
- Requires Wash Manifold 125-A-09-384
- Pipette to 384 labware
- When pipetting 1 ul and below the pipetting method will be the key factor for best precision, please contact Apricot Designs if advice is needed

125-A-01-025U



384

FIXED

- **Recommended for volume range 0.5-25 ul**
- **Maximum volume 25 ul**
- Requires Wash Manifold 125-A-09-384
- Pipette to 384 labware
- When pipetting 1 ul and below the pipetting method will be the key factor for best precision, please contact Apricot Designs if advice is needed

125-A-03-023



96

FIXED

- **Recommended for volume range 1-125 ul**
- **Maximum volume 125 ul**
- Requires Wash Manifold 125-A-06-096
- Pipette to 96 labware
- "Offset" head allows 384 channel pipettor to work with 96 well plates

125-A-03-023-25U



96

FIXED

- **Recommended for volume range 0.5-25 ul**
- **Maximum volume 25 ul**
- Requires Wash Manifold 125-A-06-096
- Pipette to 96 labware
- "Offset" head allows 384 channel pipettor to work with 96 well plates
- When pipetting 1 ul and below the pipetting method will be the key factor for best precision, please contact Apricot Designs if advice is needed

125-A-01-023



16

FIXED

SERIAL DILUTION

- Recommended for volume range 1-125 ul
- Maximum volume 125 ul
- Requires Wash Manifold 125-A-09-384-SC
- Serial Dilution by COLUMN
- Pipette to 384 labware
- The TPS will automatically perform the serial dilution operation using the programmed method

125-A-01-025U



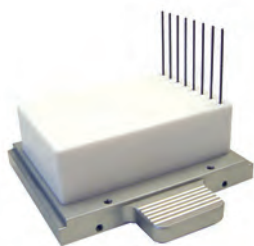
24

FIXED

SERIAL DILUTION

- Recommended for volume range 1-125 ul
- Maximum volume 125 ul
- Requires Wash Manifold 125-A-09-384-SR
- Serial Dilution by ROW
- Pipette to 384 labware
- The TPS will automatically perform the serial dilution operation using the programmed method

125-A-03-023



8

FIXED

SERIAL DILUTION

- Recommended for volume range 1-125 ul
- Maximum volume 125 ul
- Requires Wash Manifold 125-A-09-096-SC
- Serial Dilution by COLUMN
- Pipette to 96 labware
- "Offset" head allows 384 channel pipettor to work with 96 well plates
- The TPS will automatically perform the serial dilution operation using the programmed method

125-A-03-023-25U



12

FIXED

SERIAL DILUTION

- Recommended for volume range 1-125 ul
- Maximum volume 125 ul
- Requires Wash Manifold 125-A-09-096-SR
- Serial Dilution by ROW
- Pipette to 96 labware
- "Offset" head allows 384 channel pipettor to work with 96 well plates
- The TPS will automatically perform the serial dilution operation using the programmed method