

Description

The Ocean Optics USB2000+ Spectrometer includes the linear CCD-array optical bench, plus all the circuits necessary for spectrometer operation. The result is a compact, flexible system, with no moving parts, that's easily integrated as an OEM component.



The USB2000+ spectrometer is a unique combination of technologies providing users with both an unusually high spectral response and high optical resolution in a single package. The electronics have been designed for considerable flexibility in connecting to various modules as well as external interfaces. The USB2000+ interfaces to PC's, PLC's and other embedded controllers through USB 2.0 or RS-232 communications. The information included in this guide provides detailed instructions on the connection and operation of the USB2000+.

The detector used in the USB2000 spectrometer is a high-sensitivity 2048-element CCD array from Sony, product number ILX511. (For complete details on this detector, visit Sony's web site at www.sony.com. Ocean Optics applies a coating to all ILX511 detectors, so the optical sensitivity could vary from that specified in the Sony datasheet)

The USB2000+ operates off of a single +5VDC supply and either a USB or RS-232 interface. The USB2000+ is a microcontroller-controlled spectrometer, thus all operating parameters are implemented through software interfacing to the unit.

Features

- ❑ ILX511 Detector
 - High sensitivity detector
 - Readout Rate: 2.4MHz
- ❑ Optics
 - ❑ An optical resolution of ~0.3nm (FWHM)
 - ❑ A wide variety of optics available
 - 14 gratings
 - 6 slit widths
 - 3 detector coatings
 - 6 optical filters
- ❑ Electrical Performance
 - 16 bit, 3MHz A/D Converter
 - Integration times from 1ms to >60s
- ❑ 4 triggering modes
- ❑ Embedded microcontroller allows programmatic control of all operating parameters & Standalone operation
 - USB 2.0 480Mbps (High Speed) & 12Mbps (Full speed)
 - RS232 115Kbaud
 - Multiple Communication Standards for digital accessories (SPI, I²C)
- ❑ Onboard Pulse Generator
 - 2 programmable strobe signals for triggering other devices
 - Software control of nearly all pulse parameters
- ❑ Onboard GPIO
 - 10 user programmable digital I/O
- ❑ EEPROM storage for
 - Wavelength Calibration Coefficients
 - Linearity Correction Coefficients
 - Absolute Irradiance Calibration (optional)
- ❑ Plug-n-Play Interface for PC applications
- ❑ 22-pin connector for interfacing to external products
- ❑ CE Certification

Specifications

Absolute Maximum Ratings

| | |
|--------------------|-----------------|
| V _{CC} | + 5.5 VDC |
| Voltage on any pin | V _{CC} |

Physical Specifications

| | |
|---------------------|-----------------------------|
| Physical dimensions | 89.1 mm x 63.3 mm x 34.4 mm |
| Weight | 190 g |

Power

| | |
|----------------------------|----------------------------|
| Power requirement (master) | 250 mA at +5 VDC |
| Supply voltage | 4.5 – 5.5 V |
| Power-up time | ~2s depending on code size |

Spectrometer

| | |
|---------------------------|--|
| Design | Asymmetric crossed Czerny-Turner |
| Focal length (input) | 42mm |
| Focal length (output) | 68 mm (75, 83 and 90 mm focal lengths are also available) |
| Input fiber connector | SMA 905 |
| Gratings (See appendix A) | 14 different gratings |
| Entrance slit | 5, 10, 25, 50, 100, or 200 μ m slits. (Slits are optional. In the absence of a slit, the fiber acts as the entrance slit.) |
| Detector | Sony ILX511 CCD |
| Filters | 2 nd & 3 rd order rejection, long pass (optional) |

Spectroscopic

| | |
|--------------------------------------|---|
| Integration time | 1ms– >60sec |
| Dynamic range | 2 x 10 ⁸ |
| Signal-to-Noise | 250:1 single acquisition |
| Readout noise (single dark spectrum) | 50 counts RMS, 300 counts peak-to-peak |
| Resolution (FWHM) | 0.03 – 10.0 nm varies by configuration (see www.Oceanoptics.com for configuration options) |
| Stray light | <0.05% at 600 nm; <0.10% at 435 nm |
| Spectrometer channels | One |

Environmental Conditions

| | |
|-------------|---|
| Temperature | -30° to +70° C Storage & -10° to +50° C Operation |
| Humidity | 0% - 90% non-condensing |

Interfaces

| | |
|--------|-------------------|
| USB | USB 2.0, 480 Mbps |
| RS-232 | 2-wire RS-232 |

Mechanical Diagram:

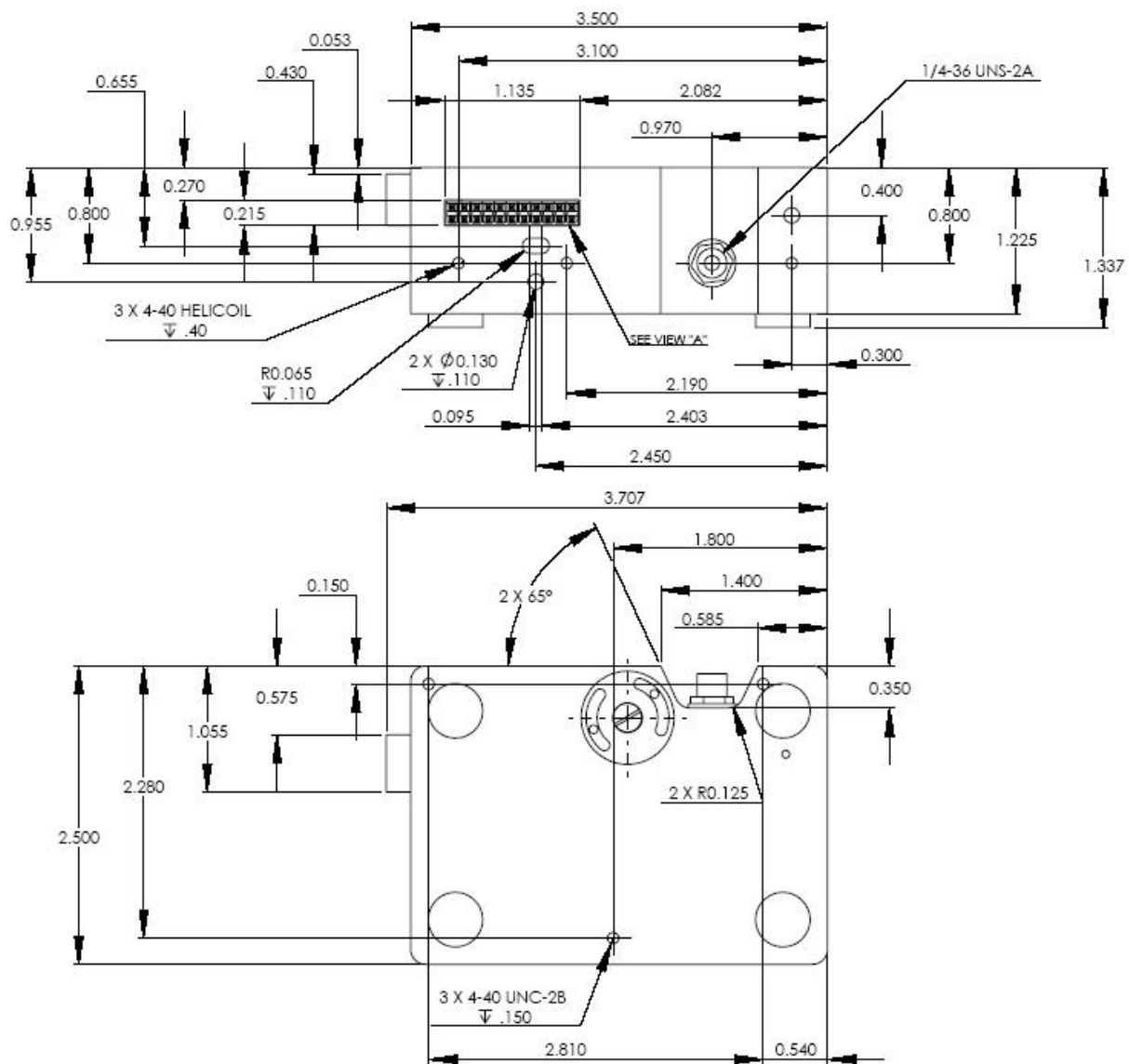
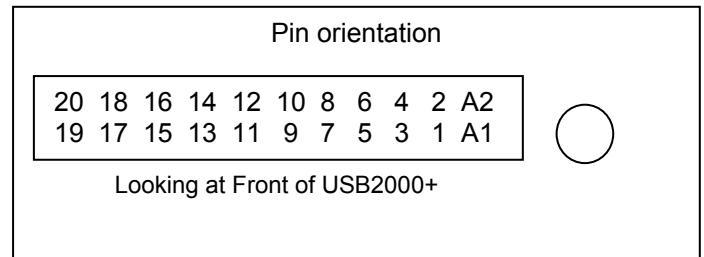


Figure 1a. USB2000+ outer dimensions

Electrical Pinout

Listed below is the pin description for the USB2000+ Accessory Connector located on the front vertical wall of the unit. The connector is a Samtec part # IPT1-111-01-S-D-RA connector. The vertical mate to this is part #IPS1-111-01-S-D-VS and the right angle PCB mount is part #IPS1-111-01-S-D-RA.

| Pin# | Description | Alt Function |
|------|---------------|-------------------------------|
| A1 | SPI_CLK | |
| A2 | SPICS_OUT | |
| 1 | VUSB | |
| 2 | Tx | |
| 3 | Rx | |
| 4 | LampEnable | |
| 5 | ContStrobe | |
| 6 | GND | |
| 7 | ExtTrigIn | |
| 8 | Single Strobe | |
| 9 | SCL | |
| 10 | SDA | |
| 11 | MOSI | |
| 12 | MISO | |
| 13 | GPIO-1 (1P)* | Master Clock |
| 14 | GPIO-0 (2P) | Base Clock |
| 15 | GPIO-3 (1N) | Integration Clock |
| 16 | GPIO-2 (2N) | Reserved |
| 17 | GPIO-5 (3P) | Acquire Spectra (Read Enable) |
| 18 | GPIO-4 (4P) | reserved |
| 19 | GPIO-7 (3N) | SH CCD pin |
| 20 | GPIO-6 (4N) | ICG CCD pin |



Notes:

* GPIO nP & nN notation is for future LVDS capability

| Function | Input/Output | Description |
|--|-----------------|--|
| V _{CC} , V _{USB} or 5V _{in} | Input or Output | This is the input power pin to the USB2000+. Additionally when operating via a Universal Serial Bus (USB) this is the USB power connection (+5V) which can be used to power other peripherals (Care must be taken to insure that the peripheral complies with USB Specifications). |
| RS232 Tx | Output | RS232 Transmit signal – for communication with PC connect to DB9 pin 2 |
| RS232 Rx | Input | RS232 Receive signal – for communication with PC connect to DB9 pin 3. |
| Lamp Enable | Output | A TTL signal that is driven Active HIGH when the Lamp Enable command is sent to the USB2000+ |
| Continuous Strobe | Output | TTL output signal used to pulse a strobe that is divided down from the Master Clock signal |
| Ground | Input/Output | Ground |
| Single Strobe | Output | TTL output pulse used as a strobe signal, which has a programmable delay relative to the beginning of the spectrometer integration period. |
| ExtTrigIn | Input | The TTL input trigger signal. In External Hardware Trigger mode this is a rising edge trigger input. In Software Trigger Mode this is an Active HIGH Level signal. In External Synchronization Mode this is a clock input, which defines the integration period of the spectrometer. |
| SCL | Input/Output | The I2C Clock signal for communications to other I2C peripherals |
| SDA | Input/Output | The I2C Data signal for communications to other I2C peripherals |
| GPIO(0-7) | Input/Output | 8 2.5V General Purpose Software Programmable Digital Inputs/Outputs |
| MOSI | Output | The SPI Master Out Slave In (MOSI) signal for communications to other SPI peripherals |
| MISO | Input | The SPI Master In Slave Out (MISO) signal for communications to other SPI peripherals |
| SPI CLK | Output | The SPI Clock signal for communications to other SPI peripherals |
| SPICS_OUT | Output | The SPI Chip/Device Select signal for communications to other SPI peripherals |

CCD Overview

CCD DETECTOR

The detector used for the USB2000+ is a charge transfer device (CCD) that has a fixed well depth (capacitor) associated with each photodetector (pixel).

Charge transfer, reset and readout initiation begin with the integration time clock going HIGH. At this point, the remaining charge in the detector wells is transferred to a shift register for serial transfer. This process is how the array is read.

The reset function recharges the photodetector wells to their full potential and allows for nearly continuous integration of the light energy during the integration time, while the data is read out through serial shift registers. At the end of an integration period, the process is repeated.

When a well is fully depleted by leakage through the back-biased photodetector, the detector is considered saturated and provides the maximum output level. The CCD is a depletion device and thus the output signal is inversely proportional to the input photons. The electronics in the USB2000 invert and amplify this electrical signal.

CCD WELL DEPTH

We strive for a large signal-to-noise (S:N) in optical measurements so that small signal variations can be observed and a large dynamic range is available. The S:N in photon noise-limited systems is defined and measured as the square root of the number of photons it takes to fill a well to saturation. In the USB2000+, the well depth of the CCD pixels is about 160,000 photons, providing a S:N of 400:1 (S:N can also be measured as the saturation voltage divided by near-saturation RMS noise). There is also a fixed readout noise component to all samples. The result is a system with a S:N of ~275:1.

There are two ways to achieve a large S:N (e.g., 6000:1) in CCD detectors where photon noise is predominant.

1. Use a large-well device that integrates to saturation over a long period of time until the photon noise is averaged out by the root of n multiples of a defined short Δt .
2. Use a small-well device that integrates to saturation at one short Δt and then signal average mathematically n times.

Theoretically, both approaches achieve the same results, though there are large differences in actual operation. Traditional spectroscopic instruments use large-well devices and 16-bit ADCs to achieve the defined S:N. The USB2000+ uses a small-well device and utilizes signal averaging to achieve the same S:N. A brief comparison of large and small-well devices is shown in the table below.

Well Depth Comparison

| Large-well CCDs | Small-well CCDs |
|--------------------------|--|
| Low photon noise | Medium photon noise that can be averaged out |
| Low optical sensitivity | High optical sensitivity |
| High power consumption | Low power consumption |
| >10 MHz operating speeds | Moderate operating speeds (~2 MHz) |

SIGNAL AVERAGING

Signal averaging is an important tool in the measurement of spectral structures. It increases the S:N and the amplitude resolution of a set of samples. The types of signal averaging available in our software are time-based and spatial-based.

When using the time-base type of signal averaging, the S:N increases by the square root of the number of samples. Signal averaging by summing is used when spectra are fairly stable over the sample period. Thus, a S:N of 2500:1 is readily achieved by averaging 100 spectra.

Spatial averaging or pixel boxcar averaging can be used to improve S:N when observed spectral structures are broad. The traditional boxcar algorithm averages n pixel values on each side of a given pixel.

Time-based and spatial-based algorithms are not correlated, therefore the improvement in S:N is the product of the two processes.

In review, large-well devices are far less sensitive than small-well devices and thus, require a longer integration time for the same output. Large-well devices achieve a good S:N because they integrate out photon noise. Small-well devices must use mathematical signal averaging to achieve the same results as large-well devices, but small-well devices can achieve the results in the same period of time. This kind of signal averaging was not possible in the past because analog-to-digital converters and computers were too slow.

Large-well devices consume large amounts of power, resulting in the need to build thermoelectric coolers to control temperature and reduce electronic noise. Then, even more power is required for the temperature stabilization hardware. But small-well devices only need to use signal averaging to achieve the same results as large-well devices, and have the advantages of remaining cool and less noisy.

INTERNAL OPERATION

Pixel Definition

A series of pixels in the beginning of the scan have been covered with an opaque material to compensate for thermal induced drift of the baseline signal. As the USB2000+ warms up, the baseline signal will shift slowly downward a few counts depending on the external environment. The baseline signal is set between 90 and 140 counts at the time of manufacture. If the baseline signal is manually adjusted, it should be left high enough to allow for system drift. The following is a description of all of the pixels:

| Pixel | Description |
|---------|-----------------------|
| 0–1 | Not usable |
| 2–24 | Optical black pixels |
| 24–25 | Transition pixels |
| 26–2074 | Optical active pixels |

It is important to note that the USB2000+ only digitizes the first 2048 pixels.

CCD DETECTOR RESET OPERATION

At the start of each integration period, the detector transfers the signal from each pixel to the readout registers and resets the pixels. The total amount of time required to perform this operation is $\sim 3 \mu\text{s}$. The user needs to account for this time delay when the pixels are optically inactive, especially in the external triggering modes.

Timing Signals

STROBE SIGNALS

Single Strobe

The Single Strobe signal is a programmable TTL pulse that occurs at a user determined time during each integration period. This pulse has a user defined delay and pulse width. The pulse is only active if the Lamp Enable command is active. This pulse allows for synchronization of external devices to the spectrometers integration period. The Strobe delay can range from 0 to 30 ms and the pulse width can range from $1 \mu\text{s}$ to the full 30ms.

Continuous Strobe

The Continuous Strobe signal is a programmable frequency pulse-train (50% duty cycle). The range of frequency is $100 \mu\text{s}$ to 60s. The pulse is only active if the Lamp Enable command is active

Synchronizing Strobe Events

If the application requires more than one pulse per integration period, the user needs to insure the continuous strobe and integration period are synchronized. The integration time must be set so that an equal number of strobe events occurs during any given integration period. This synchronization only occurs when the integration period is a multiple of a power of 2.

TRIGGERING MODES

The USB2000+ supports four triggering modes, which are set with the Trigger Mode command. A detail of each triggering mode follows.

Normal

In this mode, the USB2000+ uses the user-defined integration clock and continuously scans the CCD array.

External Software Trigger

In this mode, the USB2000+ uses the user-defined integration clock; however, the A/D converter is required to wait until the Trigger Input Signal goes HIGH before it acquires the data at the start of the next integration period. This is an asynchronous trigger mode that allows the user to define an integration period

External Hardware Trigger

In this mode, the USB2000+ uses an external rising edge of a TTL signal to begin a single integration cycle. The integration time is input by the user into the software before the trigger occurs.

External Synchronization Trigger

In this mode of the USB2000+, the integration clock is essentially input into the spectrometer. This allows the spectrometer to be synchronized with another device. The synchronized trigger must be a TTL signal with a frequency range of 5ms to 60s.

Digital Inputs & Outputs

General Purpose Inputs/Outputs (GPIO)

The USB2000+ has 8 user programmable 2.5V TTL digital Input/Output pins, which can be accessed at the 22-pin accessory connector. Through software, the state of these I/O pins can be defined and used for multi-purpose applications such as communications buses, sending digital values to an LCD/LED display, or even implementing complex feedback systems.

GPIO Recommended Operating Levels:

$V_{IL(max)} = 0.7V$

$V_{IH(min)} = 1.7V$

$I_{OL} = 24mA$

$I_{OH} = -24mA$

GPIO Absolute Maximum Ratings are as follows:

$V_{IN(min)} = -0.5V$

$V_{IN(max)} = 3.0V$

Communication and Interface

USB 2.0

480-Mbit Universal Serial Bus allows for ultra fast data transfer. This is the main communication standard for PC users. The USB BUS also provides power as well as communications over a single cord. Thereby allowing the USB2000+ to operate anywhere you can take a laptop computer without any bulky external power supplies.

RS-232

Also known as serial port communication, RS232 is a standard in PC and industrial device communications. Using transmit and receive signals this option allows the USB2000+ to be a standalone device, which can output data to other logic devices/controllers such as a PLC or microcontroller. The USB2000+ requires an external 5-Volt power source when operating in RS-232 mode.

I²C

Inter-Integrated Circuit 2-Wire serial BUS is widely used in embedded systems applications. With I²C you can add peripherals to your system without using valuable resources like I/O ports.

SPI

Serial Peripheral Interface is also a widely used communication standard in embedded systems applications. It is a 3-wire interface that can be used to communicate to multiple slave devices.

USB2000+ USB Port Interface Communications and Control Information

Overview

The USB2000+ is a microcontroller-based Miniature Fiber Optic Spectrometer that can communicate via the Universal Serial Bus or RS-232. This section contains the necessary command information for controlling the USB200 via the USB interface. This information is only pertinent to users who wish to not utilize Ocean Optics 32 bit driver to interface to the USB2000+. Only experienced USB programmers should attempt to interface to the USB2000+ via these methods.

Hardware Description

The USB2000+ utilizes a Cypress CY7C68013 microcontroller that has a high speed 8051 combined with an USB2.0 ASIC. Program code and data coefficients are stored in external E²PROM that are loaded at boot-up via the I²C bus. The microcontroller has 16K of internal SRAM and 64K of external SRAM. Maximum throughput for spectral data is achieved when data flows directly from the external FIFO's directly across the USB bus. In this mode the 8051 does not have access to the data and thus no manipulation of the data is possible.

USB Info

Ocean Optics Vendor ID number is 0x2457 and the Product ID is 0x101E.

INSTRUCTION SET

Command Syntax

The list of the commands is shown in the following table followed by a detailed description of each command. The length of the data depends on the command. All commands are sent to the USB2000+ through End Point 1 Out (EP1). All spectra data is acquired through End Point 2 and 6 In and all other queries are retrieved through End Point 1 In (EP1). The endpoints enabled and their order is:

| Pipe # | Description | Type | Hi Speed Size (Bytes) | Full Speed Size (Bytes) | Endpoint Address |
|--------|-----------------|------|-----------------------|-------------------------|------------------|
| 0 | End Point 1 Out | Bulk | 64 | 64 | 0x01 |
| 1 | End Point 2 In | Bulk | 512 | 64 | 0x82 |
| 2 | End Point 6 In | Bulk | 512 | 64 | 0x86 |
| 3 | End Point 1 In | Bulk | 64 | 64 | 0x81 |

USB Command Summary

| EP2 Command Byte Value | Description | Version |
|------------------------|---|---------|
| 0x01 | Initialize USB2000+ | 0.90.0 |
| 0x02 | Set Integration Time | 0.90.0 |
| 0x03 | Set Strobe Enable Status | 0.90.0 |
| 0x04 | Set Shutdown Mode | 0.90.0 |
| 0x05 | Query Information | 0.90.0 |
| 0x06 | Write Information | 0.90.0 |
| | | |
| | | |
| 0x09 | Request Spectra | 0.90.0 |
| 0x0A | Set Trigger Mode | 0.90.0 |
| 0x0B | Query number of Plug-in Accessories Present | 0.90.0 |
| 0x0C | Query Plug-in Identifiers | 0.90.0 |
| 0x0D | Detect Plug-ins | 0.90.0 |
| | | |
| 0x60 | General I ² C Read | 0.90.0 |
| 0x61 | General I ² C Write | 0.90.0 |
| 0x62 | General SPI I/O | 0.90.0 |
| 0x68 | PSOC Read | 0.90.0 |
| 0x69 | PSOC Write | 0.90.0 |
| 0x6A | Write Register Information | 0.90.0 |
| 0x6B | Read Register Information | 0.90.0 |
| 0x6C | Read PCB Temperature | 0.90.0 |
| 0x6D | Read Irradiance Calibration Factors | 0.90.0 |
| 0x6E | Write Irradiance Calibration Factors | 0.90.0 |
| | | |
| 0xFE | Query Information | 0.90.0 |

USB Command Descriptions

A detailed description of all USB2000+ commands follows. While all commands are sent to EP1 over the USB port, the byte sequence is command dependent. The general format is the first byte is the command value and the additional bytes are command specific values

| Byte 0 | Byte 1 | Byte 2 | ... | Byte n-1 |
|--------------|------------------|------------------|-----|------------------|
| Command Byte | Command Specific | Command Specific | ... | Command Specific |

Initialize USB2000+

Description: Initializes certain parameters on the USB2000+ and sets internal variables based on the USB communication speed the device is operating at. This command should be called at the start of every session however if the user does not call it, it will be executed on the first Request Scan command. The default values are set as follows

| Parameter | Default Value |
|--------------|--------------------|
| Trigger Mode | 0 – Normal Trigger |

Byte Format

| Byte 0 |
|--------|
| 0x01 |

Set Integration Time

Description: Sets the USB2000+ integration time in microseconds. The value is a 32-bit value whose acceptable range is 10 – 65,535,000us. If the value is outside this range the value is unchanged. For integration times less than 655,000us, the integration counter has a resolution of 10us. For integration times greater than this the integration counter has a resolution of 1ms.

Byte Format

| Byte 0 | Byte 1 | Byte 2 | Byte 3 | Byte 4 |
|--------|---------|---------|---------|---------|
| 0x02 | LSW-LSB | LSW-MSB | MSW-LSB | MSW-LSB |

MSW & LSW: Most/Least Significant Word

MSB & LSB: Most/Least Significant Byte

Set Strobe Enable Status

Description: Sets the USB2000+ Lamp Enable line (J2 pin 4) as follows. The Single Strobe and Continuous Strobe signals are enabled/disabled by this Lamp Enable Signal.

| |
|---|
| Data Byte = 0 → Lamp Enable Low/Off Data Byte = !0 → Lamp Enable HIGH/On |
|---|

Byte Format

| Byte 0 | Byte 1 | Byte 2 |
|--------|---------------|---------------|
| 0x03 | Data byte LSB | Data Byte MSB |

Set Shutdown Mode

Description: Sets the USB2000+ shutdown mode. When shutdown, the internal FX2 microcontroller is continuously running however all other functionality is disabled. In this power down mode the current consumption is reduced to 250mA (operating current for the FX2 microcontroller). When shutdown is active (active low), the external 5V signal (V5_Switched pin 3) is disabled in addition to all other signals except I²C lines.

| |
|--|
| Data Byte = 0 → Shutdown everything but the FX2 Data Byte = !0 → Power up entire Spectrometer |
|--|

Byte Format

| Byte 0 | Byte 1 | Byte 2 |
|--------|---------------|---------------|
| 0x04 | Data byte LSB | Data Byte MSB |

Query Information

Description: Query's any of the 20 stored spectrometer configuration variables. The Query command is sent to End Point 1 Out and the data is retrieved through End Point 1 In. The 20 configuration variables are indexed as follows

Data Byte - Description

- 0 – Serial Number
- 1 – 0th order Wavelength Calibration Coefficient
- 2 – 1st order Wavelength Calibration Coefficient
- 3 – 2nd order Wavelength Calibration Coefficient
- 4 – 3rd order Wavelength Calibration Coefficient
- 5 – Stray light constant
- 6 – 0th order non-linearity correction coefficient
- 7 – 1st order non-linearity correction coefficient
- 8 – 2nd order non-linearity correction coefficient
- 9 – 3rd order non-linearity correction coefficient
- 10 – 4th order non-linearity correction coefficient
- 11 – 5th order non-linearity correction coefficient
- 12 – 6th order non-linearity correction coefficient
- 13 – 7th order non-linearity correction coefficient
- 14 – Polynomial order of non-linearity calibration
- 15 – Optical bench configuration: gg fff sss
gg – Grating #, fff – filter wavelength, sss – slit size
- 16 – USB2000+ configuration: AWL V
A – Array coating Mfg, W – Array wavelength (VIS, UV, OFLV), L – L2 lens installed, V – CPLD Version
- 17 – Reserved
- 18 – Reserved
- 19 – Reserved

Byte Format

| Byte 0 | Byte 1 |
|--------|-----------|
| 0x05 | Data byte |

Return Format (EP7)

The data is returned in ASCII format and read in by the host through End Point 7.

| Byte 0 | Byte 1 | Byte 2 | Byte 3 | ... | Byte 17 |
|--------|---------------------|--------------|--------------|-----|---------------|
| 0x05 | Configuration Index | ASCII byte 0 | ASCII byte 1 | ... | ASCII byte 15 |

Write Information

Description: Writes any of the 19 stored spectrometer configuration variables to EEPROM. The 19 configuration variables are indexed as described in the Query Information. The information to be written is transferred as ASCII information.

Byte Format

| Byte 0 | Byte 1 | Byte 2 | Byte 3 | ... | Byte 17 |
|--------|---------------------|--------------|--------------|-----|---------------|
| 0x06 | Configuration Index | ASCII byte 0 | ASCII byte 1 | ... | ASCII byte 15 |

Request Spectra

Description: Initiates a spectra acquisition. The USB2000+ will acquire a complete spectra (2048 pixel values). The data is returned in bulk transfer mode through EP2. The table below provides the pixel order overview for the 2 different speeds. The pixel values are decoded as described below.

Byte Format

| |
|---------------|
| Byte 0 |
| 0x09 |

Return Format

The format for the returned spectral data is dependant upon the USB communication speed. The format for both High Speed (480 Mbps) and Full Speed (12Mbps) is shown below. All pixel values are 16 bit values which are organized in LSB | MSB order. There is an additional packet containing one value that is used as a flag to insure proper synchronization between the PC and USB2000+.

USB High Speed (480Mbps) Packet Format

The data is read from EP2In. The packet format is described below.

| Packet # | End Point | # Bytes | Pixels |
|----------|-----------|---------|-------------|
| 0 | EP2In | 512 | 0-255 |
| 1 | EP2In | 512 | 256-511 |
| 2 | EP2In | 512 | 512-767 |
| 3 | EP2In | 512 | 768-1023 |
| 4 | EP2In | 512 | 1024-1279 |
| 5 | EP2In | 512 | 1280-1535 |
| ... | EP2In | 512 | |
| 8 | EP2In | 512 | 1792-2048 |
| 9 | EP2In | 1 | Sync Packet |

The format for the first packet is as follows (all other packets except the synch packet has a similar format except the pixel numbers are incremented by 256 pixels for each packet).

Packet 0

| Byte 0 | Byte 1 | Byte 2 | Byte 3 |
|-------------|-------------|-----------------|-----------------|
| Pixel 0 LSB | Pixel 0 MSB | Pixel 1 LSB | Pixel 2 MSB |
| ... | | | |
| | | Byte 510 | Byte 511 |
| | | Pixel 255 LSB | Pixel 255 MSB |

Packet 15 – Synchronization Packet (1 byte)

| |
|---------------|
| Byte 0 |
| 0x69 |

USB Full Speed (12Mbps) Packet Format

In this mode all data is read from EP2In. The pixel and packet format is shown below.

| Packet # | End Point | # Bytes | Pixels |
|----------|-----------|---------|-------------|
| 0 | EP2In | 64 | 0-31 |
| 1 | EP2In | 64 | 32-63 |
| 2 | EP2In | 64 | 64-95 |
| ... | EP2In | 64 | |
| 63 | EP2In | 64 | 2016-2047 |
| 64 | EP2In | 1 | Sync Packet |

Packet 0

| Byte 0 | Byte 1 | Byte 2 | Byte 3 |
|-------------|-------------|-------------|-------------|
| Pixel 0 LSB | Pixel 0 MSB | Pixel 1 LSB | Pixel 2 MSB |

...

| | | Byte 62 | Byte 63 |
|--|--|--------------|--------------|
| | | Pixel 31 LSB | Pixel 31 MSB |

Packet 64 – Synchronization Packet (1 byte)

| Byte 0 |
|--------|
| 0x69 |

Set Trigger Mode

Description: Sets the USB2000+ Trigger mode to one of three states. If an unacceptable value is passed then the trigger state is unchanged (Refer to the USB2000+ manual for a description of the trigger modes)

| |
|--|
| Data Value = 0 → Normal (Free running) Mode |
| Data Value = 1 → Software Trigger Mode |
| Data Value = 2 → External Synchronization Trigger Mode |
| Data Value = 3 → External Hardware Trigger Mode |

Byte Format

| Byte 0 | Byte 1 | Byte 2 |
|--------|----------------|----------------|
| 0x0A | Data Value LSB | Data Value MSB |

Query Number of Plug-in Accessories

Description: Query's the number of Plug-in accessories preset. This is determined at power up and whenever the Plug-in Detect command is issued

Byte Format

| Byte 0 |
|--------|
| 0x0B |

Return Format

The data is returned in Binary format and read in by the host through End Point 7.

| Byte 0 |
|--------------|
| Value (BYTE) |

Query Plug-in Identifiers

Description: Query's the Plug-in accessories identifiers. This command returns 7 bytes with the last byte always being zero at this point. Each of the first 6 bytes correspond to Ocean Optics compatible devices which responded appropriately for I²C addresses 2 through 7 respectively. The I²C address are reserved for various categories of devices and the value for each category is shown below. I²C addresses 0-1 are reserved for loading program code from EEPROMS

Byte Format

| Byte 0 |
|--------|
| 0x0C |

Return Format

The data is returned in Binary format and read in by the host through End Point 7.

| Byte 0 | Byte 1 | ... | Byte 5 | Byte 6 |
|------------------------------------|------------------------------------|-----|------------------------------------|--------|
| Value @ I ² C address 2 | Value @ I ² C address 3 | ... | Value @ I ² C address 7 | 0x00 |

Detect Plug-ins

Description: Reads all of the plug-in accessories that are plugged into the I²C bus. No data values are returned.

Byte Format

| Byte 0 |
|--------|
| 0x0D |

General I²C Read

Description: Performs a general purpose read on the I²C pins for interfacing to attached peripherals. The time to complete the command is determined by the amount of data transferred and the response time of the peripheral. The I²C bus runs at 400KHz. The maximum number of bytes that can be read is 61.

Command Byte Format

| Byte 0 | Byte 1 | Byte 2 |
|--------|--------------------------|---------------|
| 0x60 | I ² C Address | Bytes to Read |

Return Byte Format

| Byte 0 | Byte 1 | Byte 2 | Byte 3 | ... | Byte N+3 |
|--------------------------|--------------------------|---------------|-------------|-----|-------------|
| I ² C Results | I ² C Address | Bytes to Read | Data Byte 0 | ... | Data byte N |

| I ² C Result Value | Description |
|-------------------------------|---|
| 0 | I ² C bus Idle |
| 1 | I ² C bus Sending Data |
| 2 | I ² C bus Receiving Data |
| 3 | I ² C bus Receiving first byte of string |
| 5 | I ² C bus in waiting for STOP condition |
| 6 | I ² C experienced Bit Error |
| 7 | I ² C experience a Not Acknowledge (NAK) Condition |
| 8 | I ² C experienced successful transfer |
| 9 | I ² C bus timed out |

General I²C Write

Description: Performs a general purpose write on the I²C pins for interfacing to attached peripherals. The time to complete the command is determined by the amount of data transferred and the response time of the peripheral. The I²C bus runs at 400KHz. The results codes are described above.

Command Byte Format

| Byte 0 | Byte 1 | Byte 2 | Byte 3 | ... | Byte N+3 |
|--------|--------------------------|----------------|-------------|-----|-------------|
| 0x61 | I ² C Address | Bytes to Write | Data Byte 0 | ... | Data byte N |

Return Byte Format

| Byte 0 |
|--------------------------|
| I ² C Results |

General SPI Input/Output

Description: Performs a general-purpose write and read on the SPI bus for interfacing to attached peripherals. The time to complete the command is determined by the amount of data transferred and the response time of the peripheral. The SPI bus runs at ~25KHz Clock. The maximum number of bytes that can be written or read is 61. During this transfer the SPI Chip Select signal is driven to an active LOW TTL level. Data is transmitted out the MOSI (Master Out Slave In) line on the rising edge of the clock signal. Data is also latched in the from the MISO line on the falling edge of the clock signal.

Command Byte Format

| Byte 0 | Byte 1 | Byte 2 | Byte 3 | ... | Byte N+2 |
|--------|----------------|--------------|--------------|-----|--------------|
| 0x62 | # of Bytes (N) | Write Byte 0 | Write Byte 1 | ... | Write Byte N |

Return Byte Format

| Byte 0 | Byte 1 | Byte 2 | Byte 3 | ... | Byte N+1 |
|----------------|-------------|-------------|-------------|-----|-------------|
| # of Bytes (N) | Read Byte 0 | Read Byte 1 | Read Byte 2 | ... | Read Byte N |

Write Register Information

Description: Most all of the controllable parameters for the USB2000+ are accessible through this command (i.e. GPIO, strobe parameters, etc). A complete list of these parameters with the associate register information is shown in the table below. Commands are written to End Point 1 Out typically with 4 bytes (some commands may require more data bytes). All data values are 16 bit values transferred in MSB | LSB order. This command requires 100us to complete; the calling program needs to delay for this length of time before issuing another command. In some instances, other commands will also write to these registers (i.e. integration time), in these cases the user has the options of setting the parameters through 2 different methods.

Byte Format

| Byte 0 | Byte 1 | Byte 2 | Byte 3 |
|--------|----------------|---------------|---------------|
| 0x6A | Register Value | Data Byte LSB | Data Byte MSB |

| Register Address | Description | Default Value | Min Value | Max Value | Time Base |
|------------------|--|---------------|-----------|-----------|--|
| 0x00* | Master Clock Counter Divisor | 24 | 1 | 0xFFFF | 48MHz |
| 0x04 | FPGA Firmware Version (Read Only) | | | | |
| 0x08 | Continuous Strobe Timer Interval Divisor | 48000 | 0 | 0xFFFF | Continuous Strobe Base Clock (see Register 0x0C) |
| 0x0C | Continuous Strobe Base Clock Divisor | 4800 | 0 | 0xFFFF | 48MHz |
| 0x10* | Integration Period Base Clock Divisor | 480 | 0 | 0xFFFF | 48MHz |
| 0x14 | Set base_clk or base_clkx2 0: base_clk 1: base_clkx2 | 0 | 0 | 1 | N/A |

| Register Address | Description | Default Value | Min Value | Max Value | Time Base |
|------------------|---|---------------|-----------|-----------|---|
| 0x18* | Integration Clock Timer Divisor | 600 | 0 | 0xFFFF | Integration Period Base Clock (see Register 0x10) |
| 0x20 | Reserved | | | | |
| 0x28 | Hardware Trigger Delay – Number of Master Clock cycles to delay when in External Hardware Trigger mode before the start of the integration period | 0 | 0 | 0xFFFF | Master Clock (see Register 0x00) |
| 0x2C** | Trigger Mode 0 = Free Running 1 = External Synchronization 2 = External Hardware Trigger | 0 | 0 | 2 | N/A |
| 0x30 | Reserved | | | | |
| 0x38 | Single Strobe High Clock Transition Delay Count | 1 | 0 | 0xFFFF | 2MHz |
| 0x3C | Single Strobe Low Clock Transition Delay Count | 5 | 0 | 0xFFFF | 2MHz |
| 0x40 | Lamp Enable | 0 | 0 | 1 | N/A |
| 0x48 | GPIO Mux Register 0: pin is GPIO pin 1: pin is alternate function | 0 | 0 | 0x03FF | N/A |
| 0x50 | GPIO Output Enable 1: pin is output 0: pin is input | 0 | 0 | 0x03FF | N/A |
| 0x54 | GPIO Data Register For Output: Write value of signal For Input: Read current GPIO state | 0 | 0 | 0x03FF | N/A |
| 0x58 | Reserved | | | | |
| 0x5C | Offset Value | 0 | 0 | 0xFFFF | N/A |
| 0x60 | Offset Control Bit 0 = Enable Auto-Nulling Bit 1 = Enable Auto-Nulling Saturation | 0 | 0 | 0xFFFF | N/A |
| 0x64 | FPGA Programmed (Read Only) | 0x5501 | N/A | N/A | N/A |

| Register Address | Description | Default Value | Min Value | Max Value | Time Base |
|------------------|--------------------------|---------------|-----------|-----------|-----------|
| 0x68 | Maximum Saturation Level | 0x55F0 | 0 | 0xFFFF | N/A |

Notes: * - User should not change these values because spectrometer performance can be effected. This information is included just for completeness
 & - These values are controlled by other command interfaces to the USB2000+ (i.e Set integration time command).

Read Register Information

Description: Read the values from any of the registers above. This command is sent to End Point 1 Out and the data is retrieved through End Point 1 In.

Byte Format

| Byte 0 | Byte 1 |
|--------|----------------|
| 0x6B | Register Value |

Return Format (EP1In)

| Byte 0 | Byte 1 | Byte 2 |
|----------------|-----------|-----------|
| Register Value | Value LSB | Value MSB |

Read PCB Temperature

Description: Read the Printed Circuit Board Temperature. The USB2000+ contains an DS1721 temperature sensor chip which is mounted to the under side of the PCB. This command is sent to End Point 1 Out and the data is retrieved through End Point 1 In. The value returned is a signed 16-bit A/D conversion value, which is equated to temperature by:

$$\text{Temperature (}^{\circ}\text{C)} = .003906 * \text{ADC Value}$$

Byte Format

| Byte 0 |
|--------|
| 0x6C |

Return Format (EP1In)

| Byte 0 | Byte 1 | Byte 2 |
|-------------|---------------|---------------|
| Read Result | ADC Value LSB | ADC Value MSB |

If the operation was successful, the Read Result byte value will be 0x08. All other values indicate the operation was unsuccessful

Read Irradiance Factors

Description: Reads 60 bytes of data, which is utilized for Irradiance Calibration information from the desired EEPROM memory address.

Byte Format

| Byte 0 | Byte 1 | Byte 2 |
|--------|--------------------|--------------------|
| 0x6D | EEPROM Address LSB | EEPROM Address MSB |

Return Byte Format

| Byte 0 | Byte 1 | ... | Byte 59 |
|--------|--------|-----|---------|
| Byte 0 | Byte 1 | ... | Byte 59 |

Write Irradiance Factors

Description: Write 60 bytes of data, which is utilized for Irradiance Calibration information to the desired EEPROM memory address.

Byte Format

| Byte 0 | Byte 1 | Byte 2 | Byte 3 | ... | Byte 62 |
|--------|--------------------|--------------------|--------|-----|---------|
| 0x6E | EEPROM Address LSB | EEPROM Address MSB | Byte 0 | ... | Byte 59 |

Query Status

Description: Returns a packet of information, which contains the current operating information. The structure of the status packet is given below

Byte Format

| Byte 0 |
|--------|
| 0xFE |

Return Format

The data is returned in Binary format and read in by the host through End Point 1 In. The structure for the return information is as follows

| Byte | Description | Comments |
|------|-----------------------------|--|
| 0-1 | Number of Pixels - WORD | LSB MSB order |
| 2-5 | Integration Time - WORD | Integration time in μ s – LSW MSW. Within each word order is LSB MSB |
| 6 | Lamp Enable | 0 – Signal LOW !0 – Signal HIGH |
| 7 | Trigger Mode Value | |
| 8 | Spectral Acquisition Status | |
| 9 | Packets In Spectra | Returns the number of Packets in a Request Spectra Command. |
| 10 | Power Down Flag | 0 – Circuit is powered down 1 – Circuit is powered up |
| 11 | Packet Count | Number of packets that have been loaded into End Point Memory |
| 12 | Reserved | |
| 13 | Reserved | |
| 14 | USB Communications Speed | 0 – Full Speed (12Mbps) 0x80 – High Speed (480 Mbps) |
| 15 | Reserved | |
| | | |

Appendix A

USB2000+ Serial Port Interface Communications and Control Information

Overview

The USB2000+ is a microcontroller-based Miniature Fiber Optic, which can communicate via the Universal Serial Bus or RS-232. This document contains the necessary command information for controlling the USB2000+ via the RS-232 interface.

Hardware Description

Overview

The USB2000+ utilizes a Cypress FX2 microcontroller, which has a high speed 8051, combined with an USB ASIC. Program code and data coefficients are stored in external E²PROM, which are loaded at boot-up via the I²C bus.

Spectral Memory Storage

The USB2000+ can store up to 4 spectra in the spectral data section. The full spectra (2048 points) are stored. Spectra are organized in a stack formation (i.e. LIFO). Its important to realize that the spectral math (averaging and boxcarring) is performed when the data is transmitted out and not when the spectra are acquired. This allows up to 4 scans to be acquired with one command (set A=4 and send the S command) and then read out on scan at a time (set A=1 and use Z1 command).

INSTRUCTION SET

Command Syntax

The list of the command are shown in the following table along with the microcode version number they were introduced with. All commands consist of an ASCII character passed over the serial port, followed by some data. The length of the data depends on the command. The format for the data is either ASCII or binary (default). The ASCII mode is set with the “a” command and the binary mode with the “b” command. To insure accurate communications, all commands respond with an ACK (ASCII 6) for an acceptable command or a NAK (ASCII 21) for an unacceptable command (i.e. data value specified out of range).

In the ASCII data value mode, the USB2000+ “echoes” the command back out the RS-232 port. In binary mode all data, except where noted, passes as 16-bit unsigned integers (WORDS) with the MSB followed by the LSB. By issuing the “v command” (Version number query), the data mode can be determined by viewing the response (ASCII or binary).

In a typical data acquisition session, the user sends commands to implement the desired spectral acquisition parameters (integration time, etc.). Then the user sends commands to acquire spectra (S command) with the previously set parameters. If necessary, the baud rate can be changed at the beginning of this sequence to speed up the data transmission process.

Upgrading from USB2000

Below are a summary of the changes that may be required if you are upgrading from a USB2000 to USB2000+

- Baud rates
 - The startup baud rate is programmable through the EEPROM Calibration Entry #18
 - The unit operates at 115.2K Baud, but does not run at 57.6K Baud
- Operating Parameters

- The I (upper case) command will set the integration time in milliseconds
- To take advantage of the microsecond integration time capability, use the i (lower case) command
- Most new operating parameters are set through the FPGA (W command)
- Spectral Data
 - If only one spectra is “Accumulated”, then data is returned in 16 bit format
 - If additional spectra is “Accumulated”, then data is returned in 32 bit format
 - The limitation of “Accumulating” 15 spectra is eliminated

Command Summary

| Letter | Description | Version |
|---------------|--|----------------|
| A | Adds scans | 1.00.0 |
| B | Set Pixel Boxcar | 1.00.0 |
| C | | |
| D | | |
| E | | |
| F | | |
| G | Set Data Compression | 1.00.0 |
| H | | |
| I | Sets integration time (16 bit value) | 1.00.0 |
| J | Sets Lamp Enable Line | 1.00.0 |
| K | Changes baud rate | 1.00.0 |
| L | | |
| M | | |
| N | | |
| O | | |
| P | Partial Pixel Mode | 1.00.0 |
| Q | | |
| R | | |
| S | Starts spectral acquisition with previously set parameters | 1.00.0 |
| T | Sets trigger mode | 1.00.0 |
| U | | |
| V | | |
| W | Set FPGA Register | 1.00.0 |
| X | | |
| Y | | |
| Z | | |
| A | Set ASCII mode for data values | 1.00.0 |
| b | Set binary mode for data values | 1.00.0 |
| i | Set Integration Time (32 bit value) | 1.00.0 |
| k | Sets Checksum mode | 1.00.0 |
| v | Provides microcode version # | 1.00.0 |
| x | Sets calibration coefficients | 1.00.0 |
| ? | Queries parameter values | 1.00.0 |
| + | Reads the plugged-in accessories | 1.00.0 |
| | | |

Command Descriptions

A detailed description of all USB2000+ commands follows. The {} indicates a data value which is interpreted as either ASCII or binary (default). The default value indicates the value of the parameter upon power up.

ADD SCANS

Description: Sets the number of discrete spectra to be summed together. Since the USB2000+ has the ability to return 32 bit values, overflow of the raw 16 bit ADC value is not a concern.

| | |
|-----------------|---------------|
| Command Syntax: | A {DATA WORD} |
| Response: | ACK or NAK |
| Range: | 1-5000 |
| Default value: | 1 |

PIXEL BOXCAR WIDTH

Description: Sets the number of pixels to be averaged together. A value of n specifies the averaging of n pixels to the right and n pixels to the left. This routine uses 32-bit integers so that intermediate overflow will not occur; however, the result is truncated to a 16-bit integer prior to transmission of the data. This math is performed just prior to each pixel value being transmitted out. Values greater than ~ 3 will exceed the idle time between values and slow down the overall transfer process.

| | |
|-----------------|---------------|
| Command Syntax: | B {DATA WORD} |
| Response: | ACK or NAK |
| Range: | 0-15 |
| Default value: | 0 |

SET DATA COMPRESSION

Description: Specifies whether the data transmitted from the USB2000+ should be compressed to speed data transfer rates. For more information on USB2000+ Data Compression, see Technical Note 1.

| | |
|-----------------|--|
| Command Syntax: | G {DATA WORD} |
| Response: | ACK or NAK |
| Range: | 0 – Compression off !0 – Compression on |
| Default value: | 0 |

INTEGRATION TIME (16 BIT)

Description: Sets the USB2000+'s integration time, in milliseconds, to the value specified. This command is the same as on the USB2000.

| | |
|-----------------|----------------------|
| Command Syntax: | I {16 bit DATA WORD} |
| Response: | ACK or NAK |
| Range: | 1 - 65535 |
| Default value: | 10 |

INTEGRATION TIME (32 BIT)

Description: Sets the USB2000+'s integration time, in microseconds, to the value specified.

| | |
|-----------------|---------------------|
| Command Syntax: | i{32 bit DATA WORD} |
| Response: | ACK or NAK |
| Range: | 1000 – 65,535,000 |
| Default value: | 10,000 |

LAMP ENABLE

Description: Sets the USB2000+'s Lamp Enable line to the value specified

| | |
|-----------------|---|
| Command Syntax: | J{DATA WORD} |
| Value: | 0 = Light source/strobe off—Lamp Enable low !0 = Light source/strobe on—Lamp Enable high |
| Response: | ACK or NAK |
| Default value: | 0 |

BAUD RATE

Description: Sets the USB2000+'s baud rate.

| | |
|-----------------|--|
| Command Syntax: | K{DATA WORD} |
| Value: | 0=2400 1=4800 2=9600 3=19200 4=38400 5=Not Supported 6=115,200 |
| Response: | See below |
| Default value: | 2 |

When changing baud rates, the following sequence must be followed:

1. Controlling program sends K with desired baud rate, communicating at the old baud rate
2. A/D responds with ACK at old baud rate, otherwise it responds with NAK and the process is aborted
3. Controlling program waits longer than 50 milliseconds
4. Controlling program sends K with desired baud rate, communicating at the new baud rate
5. A/D responds with ACK at new baud rate, otherwise it responds with NAK and old baud rate is used



If a deviation occurs at any step, the previous baud rate is utilized.

PIXEL MODE

Description: Specifies which pixels are transmitted. While all pixels are acquired on every scan, this parameter determines which pixels will be transmitted out the serial port.

| | | |
|-----------------|---|--|
| Command Syntax: | P{DATA WORD} | |
| Value: | Description 0 = all 2048 pixels 1 = every n^{th} pixel with no averaging 2 = N/A 3 = pixel x through y every n pixels 4 = up to 10 randomly selected pixels between 0 and 2047 (denoted p1, p2, ... p10) | Example P 0 (spaces for clarity only) P 1 n P 2 n P 3 x y n P 4 n p1 p2 p3...p10 |
| Response: | ACK or NAK | |
| Default value: | 0 | |

- ! Since most applications only require a subset of the spectrum, this mode can greatly reduce the amount of time required to transmit a spectrum while still providing all of the desired data. This mode is helpful when interfacing to PLCs or other processing equipment.

SPECTRAL ACQUISITION

Description: Acquires spectra with the current set of operating parameters. When executed, this command determines the amount of memory required. If sufficient memory does not exist, an ETX (ASCII 3) is immediately returned and no spectra are acquired. An STX (ASCII 2) is sent once the data is acquired and stored. If the Data Storage Mode value is 0, then the data is transmitted immediately.

| | |
|-----------------|---|
| Command Syntax: | S |
| Response: | If successful, STX followed by data If unsuccessful, ETX |

The format of returned spectra includes a header to indicate scan number, channel number, pixel mode, etc. The format is as follows:

WORD 0xFFFF – start of spectrum
 WORD Data size flag (0→Data is WORD's, 1→Data is DWORD's)
 WORD Number of Scans Accumulated
 WORD Integration time in milliseconds
 WORD FPGA Established Baseline value (MSW)
 WORD FPGA Established Baseline value (MSW)
 WORD pixel mode
 WORDs if pixel mode not 0, indicates parameters passed to the Pixel Mode command (P)
 (D)WORDs spectral data depending on Data size flag
 WORD 0xFFFD – end of spectrum

TRIGGER MODE

Description: Sets the USB2000+'s external trigger mode to the value specified.

| | |
|-----------------|---|
| Command Syntax: | T {DATA WORD} |
| Value: | 0 = Normal – Continuously scanning 1 = Software trigger 2 = External Synchronization 3 = External Hardware Trigger |
| Response: | ACK or NAK |
| Default value: | 0 |

SET FPGA REGISTER VALUE

Description: Sets the appropriate register within the FPGA. The list of register setting is in the USB command set information. This command requires two data values, one to specify the register and the next to specify the value.

| | |
|-----------------|--|
| Command Syntax: | W {DATA WORD 1} {DATA WORD 2} |
| Value: | Data Word 1 – FPGA Register address Data Word 2 – FPGA Register Value |
| Response: | ACK or NAK |
| Default value: | N/A |

ASCII DATA MODE

Description: Sets the mode in which data values are interpreted to be ASCII. Only unsigned integer values (0 – 65535) are allowed in this mode and the data values are terminated with a carriage return (ASCII 13) or linefeed (ASCII 10). In this mode the USB2000+ “echos” the command and data values back ou the RS-232 port.

| | |
|-----------------|------------|
| Command Syntax: | aA |
| Response: | ACK or NAK |
| Default value | N/A |

- ! The command requires that the string “aA” be sent without any CR or LF. This is an attempt to insure that this mode is not entered inadvertently.
- A legible response to the Version number query (v command) indicates the USB2000+ is in the ASCII data mode.

BINARY DATA MODE

Description: Sets the mode in which data values are interpreted to be binary. Only 16 bit unsigned integer values (0 – 65535) are allowed in this mode with the MSB followed by the LSB

| | |
|-----------------|--|
| Command Syntax: | bB |
| Response: | ACK or NAK |
| Default value | Default at power up – not changed by Q command |

- ! The command requires that the string “bB” be sent without any CR or LF. This is an attempt to insure that this mode is not entered inadvertently.

CHECKSUM MODE

Description: Specifies whether the USB2000+ will generate and transmit a 16-bit checksum of the spectral data. This checksum can be used to test the validity of the spectral data, and its use is recommended when reliable data scans are required. See Technical Note 2 for more information on checksum calculation.

| | |
|-----------------|---|
| Command Syntax: | k{DATA WORD} |
| Value: | 0 = Do not transmit checksum value !0 = transmit checksum value at end of scan |
| Response: | ACK or NAK |
| Default value: | 0 |

VERSION NUMBER QUERY

Description: Returns the version number of the code running on the microcontroller. A returned value of 1000 is interpreted as 1.00.0

| | |
|-----------------|-----------------------------|
| Command Syntax: | v |
| Response: | ACK followed by {DATA WORD} |
| Default value | N/A |

CALIBRATION CONSTANTS

Description: Writes one of the 16 possible calibration constant to EEPROM. The calibration constant is specified by the first DATA WORD which follows the x. The calibration constant is stored as an ASCII string with a max length of 15 characters. The string is not checked to see if it makes sense.

| | |
|-----------------|---|
| Command Syntax: | x{DATA WORD} {ASCII STRING} |
| Value: | DATA WORD Index description 0 – Serial Number 1 – 0 th order Wavelength Calibration Coefficient 2 – 1 st order Wavelength Calibration Coefficient 3 – 2 nd order Wavelength Calibration Coefficient 4 – 3 rd order Wavelength Calibration Coefficient 5 – Stray light constant 6 – 0 th order non-linearity correction coefficient 7 – 1 st order non-linearity correction coefficient 8 – 2 nd order non-linearity correction coefficient 9 – 3 rd order non-linearity correction coefficient 10 – 4 th order non-linearity correction coefficient 11 – 5 th order non-linearity correction coefficient 12 – 6 th order non-linearity correction coefficient 13 – 7 th order non-linearity correction coefficient 14 – Polynomial order of non-linearity calibration 15 – Optical bench configuration: gg fff sss gg – Grating #, fff – filter wavelength, sss – slit size 16 – USB2000+ configuration: AWL V A – Array coating Mfg, W – Array wavelength (VIS, UV, OFLV), L – L2 lens installed, V – CPLD Version 17 – Reserved 18 – Reserved 19 – Reserved |
| Response: | ACK or NAK |
| Default value: | N/A |

To query the constants, use the ?x{DATA WORD} format to specify the desired constant

QUERY VARIABLE

Description: Returns the current value of the parameter specified. The syntax of this command requires two ASCII characters. The second ASCII character corresponds to the command character which sets the parameter of interest (acceptable values are B, A, I, K, T, J, y). A special case of this command is ?x (lower case) which requires an additional data word be passed to indicate which calibration constant is to be queried.

| | |
|-----------------|-----------------------------|
| Command Syntax: | ?{ASCII character} |
| Response: | ACK followed by {DATA WORD} |
| Default value: | N/A |

Examples

Below are examples on how to use some of the commands. Commands are in **BOLD** and descriptions are in parenthesis. For clarity, the commands are shown in the ASCII mode (a command) instead of the default binary mode. In ASCII mode, the USB2000+ transmits a ">" prompt that is useful to determine when it is ready to accept a command.

The desired operating conditions are: acquire spectra from the spectrometer with a 20.150ms integration time, set number of scan to add to 5 and operate at 115,200 Baud.

```

aA           (Set ASCII Data Mode)
> K6<CR>      (Start baud rate change to 115,200)
                Wait for ACK, change to 115200, wait for 20ms
> K6<CR>      (Verify command, communicate at 115200)
> A5<CR>      (Add 5 spectra)
> i20150<CR>  (Set integration time to 20.150ms)
S           (Acquire spectra)
...          Repeat as necessary

```

Application Tips

- ❖ During the software development phase of a project, the operating parameters of the USB2000+ may become out-of-synch with the controlling program. It is good practice to cycle power on the USB2000+ when errors occur.
- ❖ If you question the state of the USB2000+, you can transmit a space (or another non-command) using a terminal emulator. If you receive a NAK, the USB2000+ is awaiting a command; otherwise, it is still completing the previous command.
- ❖ For Windows users, use HyperTerminal as a terminal emulator after selecting the following:
 1. Select **File | Properties**.
 2. Under **Connect using**, select **Direct to Com x**.
 3. Click **Configure** and match the following **Port Settings**:
 - Bits per second (Baud rate): Set to desired rate
 - Data bits: 8
 - Parity: None
 - Stop bits: 1
 - Flow control: None
 4. Click **OK** in **Port Settings** and in **Properties** dialog boxes.