

DIRECT SAMPLE ANALYSIS

Without Sample Preparation on a Compact Mass Spectrometer

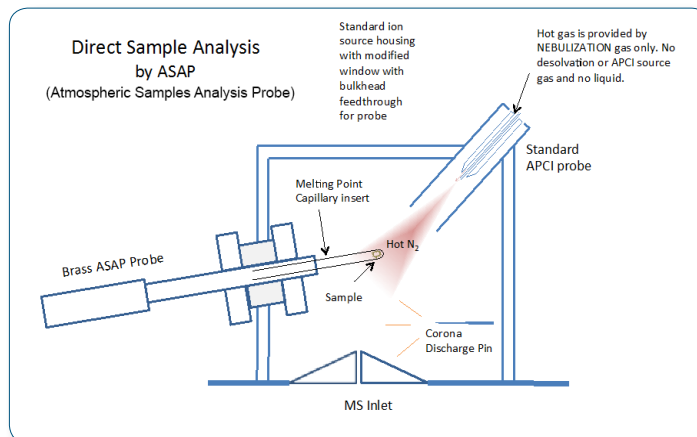
Advion

INTRODUCTION

Chemists are tasked with quickly identifying compounds created, ensuring quality of products or evaluating safety. Current techniques are adequate, but not all offer speed, data quality or ease-of-use provided by the expression Compact Mass Spectrometer (CMS). The expression CMS with the direct analysis probe (ASAP[®]) offers chemists the ability to rapidly analyze solids, liquids and powders without tedious and time consuming sample preparation.

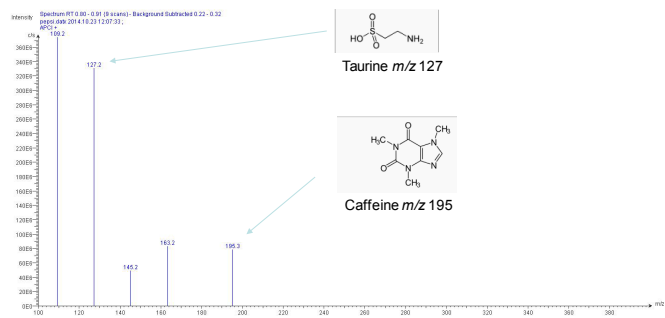
METHOD

Dip the closed end of the glass melting point capillary into the fizzy drink or sample. Wipe of the excess and insert the direct analysis probe into the mass spectrometer for analysis. Obtain results in seconds.

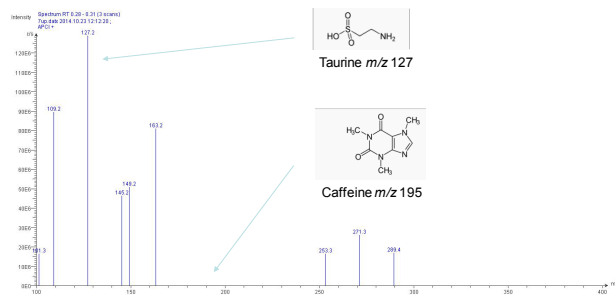


RESULTS

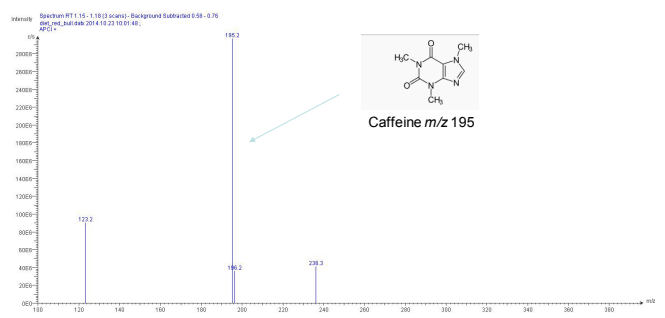
COLA



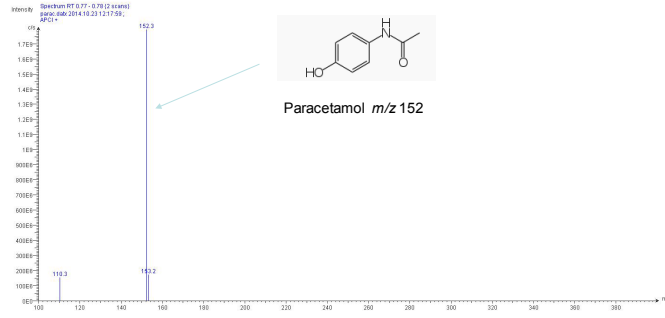
CAFFEINE-FREE LEMONADE



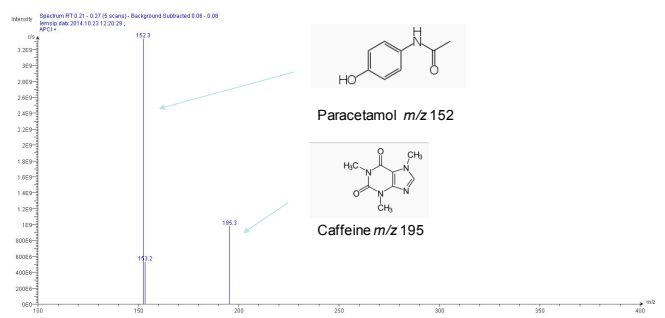
ENERGY DRINK



PARACETAMOL TABLET



COLD REMEDY DRINK



SUMMARY

- No sample preparation
- No chromatography
- Data in < 1 minute

Ideal for: Reaction monitoring, Compound ID, Food safety, Natural products

Advion

www.expressioncms.com
info@advion.com

Advion is a leader in mass spectrometry & synthesis solutions. The expression CMS is a high performance, compact, affordable single quad mass spectrometer. Its compact size allows it to fit into space-limited labs for direct access and immediate results for chemists requiring mass confirmation, reaction monitoring, quality control and purity analysis.