



Identification of *Lactobacillus* from the Saliva of Adult Patients with Caries Using Matrix-Assisted Laser Desorption/Ionization Time-Of-Flight Mass Spectrometry

Yifei Zhang^{1,2}, Yingyi Liu^{2,3}, Qingwei Ma³, Yeqing Song¹, Qian Zhang¹, Xiaoyan Wang², Feng Chen^{1*}

1 Central Laboratory, Peking University School and Hospital of Stomatology, Beijing, P.R. China, **2** Department of Cariology and Endodontology, Peking University School and Hospital of Stomatology, Beijing, P.R. China, **3** Academy for Advanced Interdisciplinary Studies, Peking University, Beijing, China

Abstract

Matrix-assisted laser desorption/ionization (MALDI) time-of-flight (TOF) mass spectrometry (MS) has been presented as a superior method for the detection of microorganisms in body fluid samples (e.g., blood, saliva, pus, etc.) However, the performance of MALDI-TOF MS in routine identification of caries-related *Lactobacillus* isolates from saliva of adult patients with caries has not been determined. In the present study, we introduced a new MALDI-TOF MS system for identification of lactobacilli. Saliva samples were collected from 120 subjects with caries. Bacteria were isolated and cultured, and each isolate was identified by both 16S rRNA sequencing and MALDI-TOF MS. The identification results obtained by MALDI-TOF MS were concordant at the genus level with those of conventional 16S rRNA-based sequencing for 88.6% of lactobacilli (62/70) and 95.5% of non-lactobacilli (21/22). Up to 96 results could be obtained in parallel on a single MALDI target, suggesting that this is a reliable high-throughput approach for routine identification of lactobacilli. However, additional reference strains are necessary to increase the sensitivity and specificity of species-level identification.

Citation: Zhang Y, Liu Y, Ma Q, Song Y, Zhang Q, et al. (2014) Identification of *Lactobacillus* from the Saliva of Adult Patients with Caries Using Matrix-Assisted Laser Desorption/Ionization Time-Of-Flight Mass Spectrometry. PLoS ONE 9(8): e106185. doi:10.1371/journal.pone.0106185

Editor: John M. Koomen, Moffitt Cancer Center, United States of America

Received: February 17, 2014; **Accepted:** July 28, 2014; **Published:** August 28, 2014

Copyright: © 2014 Zhang et al. This is an open-access article distributed under the terms of the Creative Commons Attribution License, which permits unrestricted use, distribution, and reproduction in any medium, provided the original author and source are credited.

Funding: This work was supported by grants 81300880 and 81200762 from National Natural Science Foundation of China, and by funding from Peking University School of Stomatology (PKUSS20110301). The funders had no role in study design, data collection and analysis, decision to publish, or preparation of the manuscript.

Competing Interests: The authors have declared that no competing interests exist.

* Email: moleculecf@gmail.com

These authors contributed equally to this work.

Introduction

Lactobacilli were the first microorganisms implicated in the development of dental caries [1] and have been shown to be associated with the dental carious process [2]. The *Lactobacillus* count represents the number of lactobacilli present in 1 mL of saliva (CFU/mL), and is used to determine the efficiency of dietetic measures or to evaluate caries risk. It can be used alone or in combination with other associated parameters [3,4]. Granath et al. [5] suggested that the saliva count of lactobacilli is a better criterion than that of *Streptococcus mutans* as the former count is strongly correlated with caries [6–12]. Specifically, a higher decay missing fill (DMF) index is associated with a greater number of children harboring a high *Lactobacillus* count [13,14].

Although there is a strong association between lactobacilli and caries, little is known regarding the relationship at the species level because of difficulties in identifying *Lactobacillus* species by conventional methods [15].

Efforts have been made to develop simple and rapid methods for discriminating *Lactobacillus* species, and the advent of novel molecular tools has facilitated identification.

Matrix-assisted laser desorption/ionization time-of-flight mass spectrometry (MALDI-TOF MS) is a rapid, accurate, and cost-effective method used to identify microorganisms [16–18]. Although MALDI-TOF MS was introduced into routine microbiological diagnoses with marked success in many fields [19–22],

there is still room for improvement in identification of lactobacilli, especially in salivary samples as the *Lactobacillus* strains found in saliva are phenotypically very similar [23]. Most recent studies regarding identification of microorganisms by MALDI-TOF MS were based on the Bruker system [24,25], which has already been commercially developed for clinical application. However, differing from these evaluative studies, we introduced a new MALDI-TOF MS system for identification of lactobacilli. We provided further first-hand information regarding the identification process, such as database establishment and principles of identification, to facilitate future improvement in identification of lactobacilli or other species.

Little is known regarding the oral *Lactobacillus* species associated with adult caries. To gain a greater understanding of the roles of various lactobacilli in the development of dental caries in adults, we assessed the capability of MALDI-TOF MS to identify lactobacilli isolated from the saliva of adult patients with caries.

Materials and Methods

Study population

The study population consisted of 120 adults, 18–75 years old, with dental caries. Between April and June 2013, patients were recruited from the Department of Endodontics of the Peking

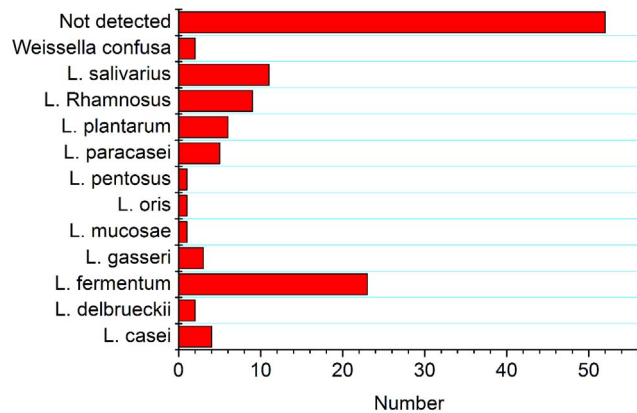


Figure 1. Distribution of *Lactobacillus* species in the saliva of adult patients with caries as determined by 16S rRNA sequencing.

doi:10.1371/journal.pone.0106185.g001

University School and Hospital of Stomatology, and 30 subjects from the Department of Endodontics of Beijing Stomatological Hospital Capital Medical University.

Three clinicians performed the clinical examinations. Each subject was examined according to WHO standard methods and criteria [WHO, 1997]. Non-stimulated saliva samples were collected from each subject. The Institutional Review Board of Peking University School and Hospital of Stomatology approved the study protocol (approval number PKUSSIRB-2013021). And participants provided their written informed consent to participate in this study.

Isolation and identification of lactobacilli

For each sample, a 60- μ L aliquot of saliva was spread on selective medium that promotes the growth of lactobacilli while suppressing growth of other bacteria (Rogosa agar; Hope Bio-Technology Co., Qingdao, Shandong, China). After incubation in a 5% CO₂ incubator at 37°C for 48 h, a single colony with the most predominate morphology was picked and sub-cultured for 24 h on Rogosa agar under the same conditions. Then, a colony from the sub-culture was analyzed by 16S rRNA sequencing and another was examined by MALDI-TOF MS for identification.

For 16S rRNA sequencing, the primers 16S-27f (AGAGTTT-GATCCTGGCTCA) and 16S-1492r (GGTTACCTTGTTAC-GACTT) were used for PCR. All sequencing reactions were performed using a standard thermocycler with 35 cycles of denaturation (30 s at 95°C), annealing (60 s at 60°C), and extension (1 min 45 s at 72°C). Sequencing was performed by BGI Tech Company (Beijing, China) and the obtained sequences were compared with those in the National Center of Biotechnology Information (NCBI) database by BLAST searching.

Mass mapping by MALDI-TOF MS

Bacterial extracts for MS were prepared as follows. A colony was transferred into a 1.5-mL centrifuge tube using an inoculation loop. A 300- μ L aliquot of deionized water and 900 μ L of absolute ethanol were then added, and the mixture was vortexed for 1 min prior to centrifugation (16200 \times g, 10 min).

Following centrifugation, the supernatant was removed, and the bacterial pellet was then air-dried, resuspended in 50 μ L of 70% formic acid, and vortexed. Then 50 μ L of 100% acetonitrile was added, and the resulting mixture was vortexed and centrifuged at 16200 \times g for 5 min. Aliquots of 1 μ L of the supernatant were spotted onto a ground steel target in triplicate (Bioyong, Beijing, China), and air-dried for 10 min. Each spot was overlaid with 1 μ L of matrix solution (α -cyano-4-hydroxycinnamic acid in 50% acetonitrile/0.1% trifluoroacetic acid), and allowed to co-crystallize for 1 min at room temperature. Spectra were acquired using a Clin-ToF mass spectrometer (Bioyong, Beijing, China) in linear positive mode (laser frequency, 20 Hz; acceleration voltage, 20 kV; pulser voltage, 1.9 kV; Einzel voltage 5 kV; delayed ext. focus mass, 10000; mass range, 2000 – 13000 Da).

The composite profile was analyzed using BioExplorer 1.0 software (Bioyong) with default parameter settings. The following reference strains were used to establish a database: *Lactobacillus acidophilus* ATCC 4356, *Lactobacillus casei* ATCC 334, *Lactobacillus fermentum* ATCC 14931, *Lactobacillus oris* ATCC 49062, *Lactobacillus plantarum* ATCC 8014, *Lactobacillus rhamnosus* ATCC 7469, and *Lactobacillus salivarius* ATCC 11741. The main spectra of each reference strain were obtained using the “training” process. Briefly, each reference strain was spotted in 72 duplicate samples, and 72 spectra were obtained. The peaks with the least detected frequency (e.g., < 10%) were excluded. The peak list of the main spectra and the frequency of each peak were obtained.

Unknown spectra were identified within BioTyper (Bioyong, Beijing, China) by comparison with reference spectra (MSPs). The identification process starts with preprocessing of unknown spectra and generation of peak lists. The peak lists of unknown spectra are then compared and aligned with those of MSPs. In the first step, unknown spectra are calibrated to the MSPs. For this calibration an initial mass error can be selected within the identification parameters (parameter Max. Mass Error of the Raw Spectrum). BioTyper attempts to align the highest peaks of each spectrum within the borders of the initial mass error. While keeping quadratic calibration constant, peaks were aligned and spectra were calibrated. The goal was to reach the highest grade of homology.

In the second step, the matching of unknown spectra to the MSPs was evaluated based on dedicated score values. For this, peak information of the MSPs was transformed to a maximum accessible score (point) value. The peak frequency corresponds to the occurrence of the respective peak within the spectra used for generation of the MSPs. A final score value for the unknown spectrum is calculated according to the discrepancy between the unknown spectrum and reference spectrum, the number of matched spectrum and the frequency of common spectrum. Peaks with lower frequencies show the appropriate scores. Scores of ≥ 10.0 were considered high-confidence identification. For each specimen, three replicates were measured and specimens for which at least two tests scored > 10 were identified as *Lactobacillus*.

Results

Isolation and distribution of lactobacilli in caries-positive adults

Saliva samples were collected from 120 carious patients, and cultured in Rogosa agar for selection of lactobacilli. Samples from 28 subjects did not grow on Rogosa plates, and 22 of the

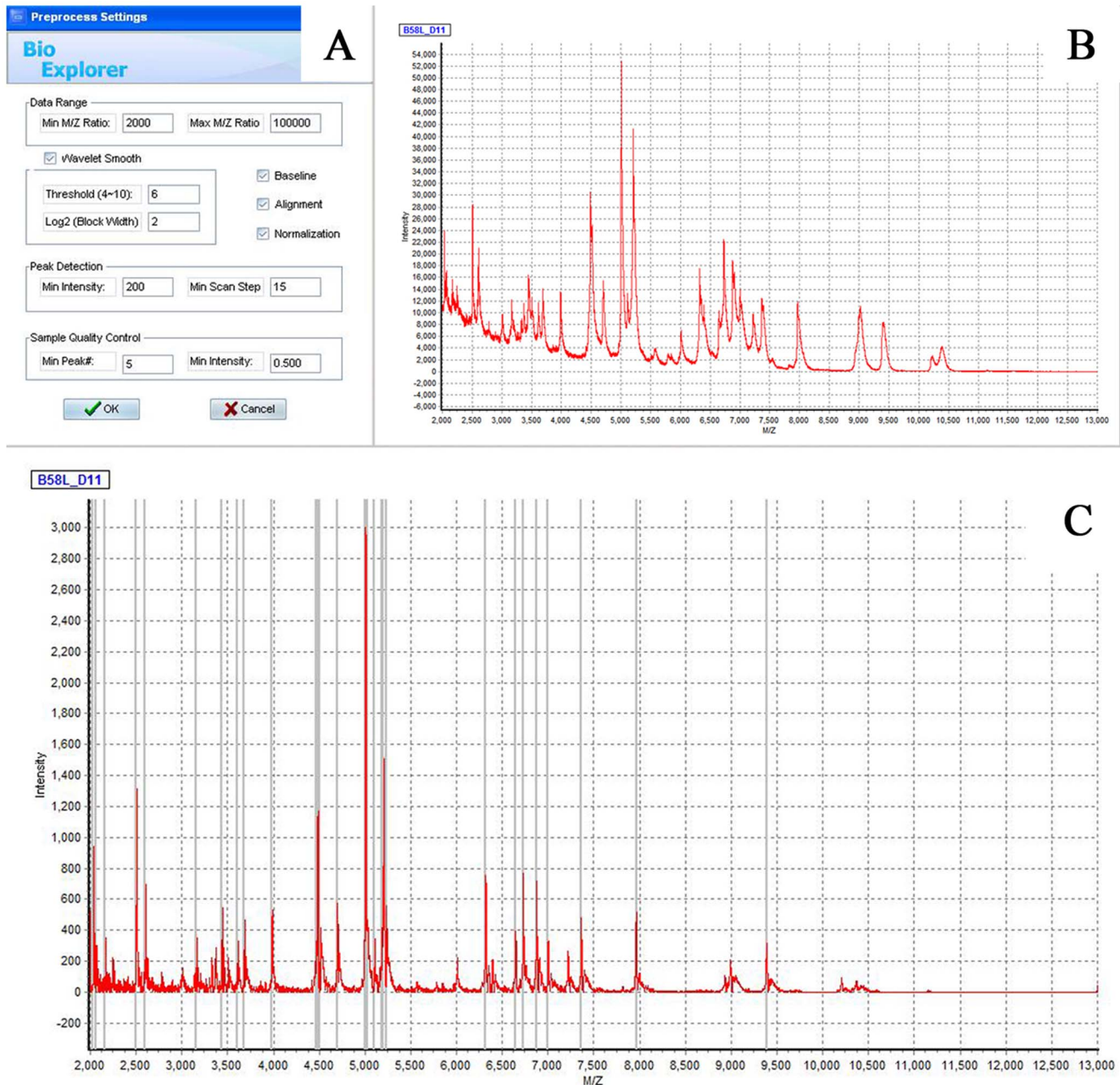


Figure 2. The raw data (MALDI-TOF profile mass spectra) of the sample strain (B) were preprocessed through the default settings (A), and the normalized spectra (C) were obtained.

doi:10.1371/journal.pone.0106185.g002

remaining 92 were non-lactobacilli, such as *Streptococcus*, and were therefore negative isolates. A total of 70 lactobacilli were cultured from 120 saliva samples (58.3%). The distribution of *Lactobacillus* species detected in carious patients is shown in Figure 1; the predominant species found were *L. fermentum*, *L. salivarius*, and *L. rhamnosus*.

Establishing a detection model using MALDI-TOF MS

Figure S1 shows typical spectra of seven reference strains and one clinical isolate. The majority of the peaks were obtained below

a mass/charge (m/z) ratio of 8000, and no peaks were observed above an m/z of 10000. Spectra are characteristic and differ between species. The raw data were calibrated during the “preprocess” process, including baseline adjustment, spectra denoising, and wavelet smoothing (Fig. 2). Statistical analysis was performed on peak selection (Fig. 2C) using the BioExplorer software. Each sample spectrum was then compared with the main spectra of the reference strains during the “identification” process (Fig. 3). In the graphical output, matching peaks within 2 Da are shown in green, those within 5 Da are in yellow, and non-

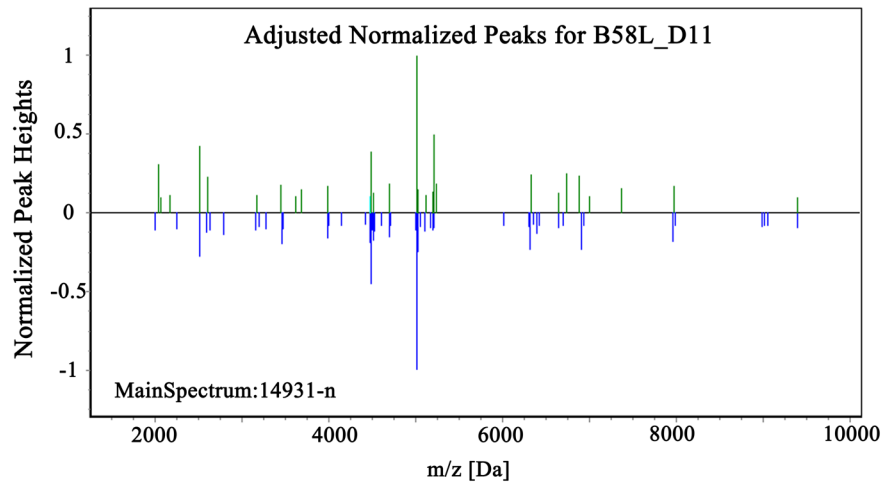


Figure 3. The spectra of the isolated strains (top) were compared with the main spectra of the reference strains (bottom).
doi:10.1371/journal.pone.0106185.g003

matching peaks are shown in red. From the cumulative score value of the unknown spectrum and the maximum score of the MSP, a final score value for the unknown spectrum is calculated (Table 1). A higher score is given when the sample spectrum has more common peaks with the higher frequency reference spectra. The

result would be considered correct if identical to the 16S rRNA sequencing result.

Identification of lactobacilli by MALDI-TOF MS

Among all of the samples, 83 of 92 (90.2%) isolates were identified correctly using MALDI-TOF MS. Specifically, 62 of 70

Table 1. The information from, and frequency of, coincident peaks were converted into scores (see column 1000*pro).

Report	Detected Species	Act Sc	Max Sc	Rel Score	PN k	PN b	PN m	Rel P-Nu...	I-Corr.	1000*Pro
B58L_D10	14931-n	1111	2272	0.49	7	6	27	0.37	0.83	151
	ATCC4356	350	3192	0.11	1	3	27	0.09	1.00	10
	ATCC8014	136	2500	0.05	0	6	27	0.11	0.97	5
	ATCC11741	226	3692	0.06	1	2	27	0.07	1.00	4
	7469-n	71	2412	0.03	0	4	27	0.07	0.16	0
	49062-n	100	1835	0.05	1	2	27	0.07	0.00	0
	ATCC334	0	2348	0.00	1	0	27	0.04	0.00	0
B58L_D11	14931-n	1220	2272	0.54	6	8	28	0.36	0.88	168
	ATCC8014	136	2500	0.05	0	6	28	0.11	0.97	5
	ATCC4356	250	3192	0.08	1	2	28	0.07	0.98	5
	ATCC11741	126	3692	0.03	0	2	28	0.04	1.00	1
	7469-n	71	2412	0.03	0	4	28	0.07	0.18	0
	49062-n	100	1835	0.05	1	2	28	0.07	0.00	0
	ATCC334	0	2348	0.00	0	1	28	0.02	0.00	0
B58L_D12	14931-n	1129	2272	0.50	6	8	25	0.40	0.80	159
	49062-n	137	1835	0.07	2	1	25	0.10	1.00	7
	ATCC4356	196	3192	0.06	1	2	25	0.08	0.97	4
	ATCC11741	182	3692	0.05	1	2	25	0.08	0.81	3
	ATCC8014	164	2500	0.07	0	4	25	0.08	0.15	0
	7469-n	51	2412	0.02	0	2	25	0.04	0.00	0
	ATCC334	0	2348	0.00	0	0	25	0.00	0.00	0

doi:10.1371/journal.pone.0106185.t001

Table 2. Identification of lactobacillus in 92 clinical isolates obtained using MALDI-TOF MS compared with partial 16S rRNA gene sequence-based identification.

	16S rRNA sequencing results		Total
	Positive	Negative	
MALDI-TOF MS			
Positive	62	1	63
Negative	8	21	29
Total	70	22	92

doi:10.1371/journal.pone.0106185.t002

(88.6%) positive isolates and 21 of 22 (95.5%) negative isolates were identified correctly at the genus level (Table 2). Table 3 shows the results of species identification. For species with standard spectra in the database, the identification was correct at the species level. For example, the identification rates of *L. fermentum*, *L. rhamnosus*, and *L. plantarum* were 80% (20/25), 75% (6/8), and 100% (7/7), respectively. However, the correct rate was only 36.4% (4/11) for *L. salivarius* at the species level.

Discussion

The effectiveness of MALDI-TOF MS for identification of bacterial species was demonstrated previously [18,21,26,27]. In this study, we established assessed the effectiveness of a novel identification method. The MALDI BioExplorer software compares unknown mass spectra with reference data stored in a database by pattern matching. First, the software extracts a list of mass spectrum peaks after smoothing and baseline subtraction. This list of peaks is compared with each entry in the reference database, and the unknown peak in the list is aligned with each main spectrum by a dedicated recalibration algorithm. In addition, correlation of the frequencies of matching peaks is performed. A score of this identification is then calculated based on peak matches and frequency correlations. After comparing the

unknown spectrum with all of the main spectra in the database, the score values are summed. In the present study, 90.2% of isolates were identified correctly to the genus level using the MALDI-TOF MS-based method (Table 2). These data were consistent with those obtained using the reference method, and were comparable to the results of previous studies using other MALDI-TOF mass spectrometry systems [25,28]. These observations suggest that MALDI-TOF MS is a powerful method for the rapid identification of lactobacilli in human saliva. The *Lactobacillus* genus includes more than 80 species, ~20 of which have been found in the oral cavity [29]. We selected seven species that are closely related to dental caries; i.e., *L. fermentum*, *L. rhamnosus*, *L. plantarum*, *L. casei*, and *L. salivarius* [15,25,30]. The precise identification of these lactobacilli at the species level was effective for all except *L. salivarius*, which may have been due to the low quality of the standard spectrum of *L. salivarius* (Fig. S1). To improve the database, the experimental process should be further optimized. Furthermore, to limit the data pool, not all colonies from the saliva samples can be identified at the species level. Therefore, it is important to enrich the information content of the data pool. Meanwhile, more *Lactobacillus* colonies in the saliva samples may be needed to confirm the effectiveness of the identification. However, the establishment of a database and identification were shown to be feasible.

Table 3. Clinical isolates identified by MALDI-TOF MS.

	No. of strains	No. identified correctly	
		Genus level	Species level
<i>Lactobacillus casei</i>	4	3	3
<i>Lactobacillus delbrueckii</i>	2	1	0
<i>Lactobacillus fermentum</i>	25	23	20
<i>Lactobacillus gasseri</i>	3	2	0
<i>Lactobacillus mucosae</i>	1	1	0
<i>Lactobacillus oris</i>	1	1	1
<i>Lactobacillus paracasei</i>	5	5	0
<i>Lactobacillus pentosus</i>	1	0	0
<i>Lactobacillus plantarum</i>	7	7	7
<i>Lactobacillus Rhamnosus</i>	8	8	6
<i>Lactobacillus salivarius</i>	11	9	4
<i>Weissella confusa</i>	1	1	0

doi:10.1371/journal.pone.0106185.t003

Saliva is a clinically informative fluid that is useful for novel approaches to prognosis, clinical diagnosis, and the monitoring and management of patients with oral and systemic diseases, because it contains specific soluble biological markers that allow early disease detection [31,32]. Positive correlations between salivary caries-related findings and caries prevalence have been established in groups of children [33] and adolescents [34], and the removal and restoration of caries regions would reduce the numbers of salivary lactobacilli [35,36]. The dominant bacterial species in the saliva of a carious patient may serve as an indicator for predicting caries susceptibility, and may also facilitate identification of subjects at a high risk of caries. Determination of bacterial markers that could serve as indicators for predicting caries susceptibility would require a rapid and efficient method of screening carious patients [15]; MALDI-TOF MS is one such method. In this study, we confirmed the potential of MALDI-TOF MS for caries-related bacterial detection. The model is well suited to detection of lactobacilli, and would be appropriate for detection of other bacteria using different databases. Furthermore, it will facilitate investigation of the prevalence of various *Lactobacillus* species in the oral cavity and in relation to the caries frequencies of different age groups.

References

- Owen OW (1949) A study of bacterial counts (lactobacilli) in saliva related to orthodontic appliances; a preliminary report. *Am J Orthod* 35: 672–678.
- Chhour KL, Nadkarni MA, Byun R, Martin FE, Jacques NA, et al. (2005) Molecular analysis of microbial diversity in advanced caries. *J Clin Microbiol* 43: 843–849.
- Grossner CG (1981) Salivary lactobacillus counts in the prediction of caries activity. *Community Dent Oral Epidemiol* 9: 182–190.
- Scheinin A, Pienihakkinen K, Tiekso J, Holmberg S, Fukuda M, et al. (1994) Multifactorial modeling for root caries prediction: 3-year follow-up results. *Community Dent Oral Epidemiol* 22: 126–129.
- Granath L, Cleaton-Jones P, Fatti LP, Grossman ES (1994) Salivary lactobacilli explain dental caries better than salivary mutants streptococci in 4-5-year-old children. *Scand J Dent Res* 102: 319–323.
- Zickert I, Emilson CG, Krasse B (1982) Streptococcus mutans, lactobacilli and dental health in 13-14-year-old Swedish children. *Community Dent Oral Epidemiol* 10: 77–81.
- Kohler B, Bjarnason S (1987) Mutans streptococci, lactobacilli and caries prevalence in 11- and 12-year-old Icelandic children. *Community Dent Oral Epidemiol* 15: 332–335.
- Alaluusua S, Nystrom M, Gronroos L, Peck L (1989) Caries-related microbiological findings in a group of teenagers and their parents. *Caries Res* 23: 49–54.
- Russell JI, MacFarlane TW, Aitchison TC, Stephen KW, Burchell CK (1990) Caries prevalence and microbiological and salivary caries activity tests in Scottish adolescents. *Community Dent Oral Epidemiol* 18: 120–125.
- Roeters J, Burgersdijk R, Truin GJ, van't Hof M (1995) Dental caries and its determinants in 2-to-5-year-old children. *ASDC J Dent Child* 62: 401–408.
- Mazengo MC, Tenovuo J, Hausen H (1996) Dental caries in relation to diet, saliva and cariogenic microorganisms in Tanzanians of selected age groups. *Community Dent Oral Epidemiol* 24: 169–174.
- Shi S, Zhao Y, Hayashi Y, Yakushiji M, Machida Y (1999) A study of the relationship between caries activity and the status of dental caries: application of the Dentocult LB method. *Chin J Dent Res* 2: 34–37.
- Koll-Klais P, Mandar R, Leibur E, Kjaeldgaard M (2004) High levels of salivary lactobacilli in Estonian schoolchildren. *Eur J Paediatr Dent* 5: 107–109.
- Gabris K, Nagy G, Madlena M, Denes Z, Marton S, et al. (1999) Associations between microbiological and salivary caries activity tests and caries experience in Hungarian adolescents. *Caries Res* 33: 191–195.
- Teapaisan R, Dahlen G (2006) Use of polymerase chain reaction techniques and sodium dodecyl sulfate-polyacrylamide gel electrophoresis for differentiation of oral *Lactobacillus* species. *Oral Microbiol Immunol* 21: 79–83.
- Holland RD, Wilkes JG, Rafii F, Sutherland JB, Persons CC, et al. (1996) Rapid identification of intact whole bacteria based on spectral patterns using matrix-assisted laser desorption/ionization with time-of-flight mass spectrometry. *Rapid Commun Mass Spectrom* 10: 1227–1232.
- Wieser A, Schneider L, Jung J, Schubert S (2012) MALDI-TOF MS in microbiological diagnostics-identification of microorganisms and beyond (mini review). *Appl Microbiol Biotechnol* 93: 965–974.
- Mellmann A, Cloud J, Maier T, Keckevoet U, Ramminger I, et al. (2008) Evaluation of matrix-assisted laser desorption ionization-time-of-flight mass spectrometry in comparison to 16S rRNA gene sequencing for species identification of nonfermenting bacteria. *J Clin Microbiol* 46: 1946–1954.
- Ilna EN, Borovskaya AD, Malakhova MM, Vereshchagin VA, Kubanova AA, et al. (2009) Direct bacterial profiling by matrix-assisted laser desorption-ionization time-of-flight mass spectrometry for identification of pathogenic *Neisseria*. *J Mol Diagn* 11: 75–86.
- Chen WH, Hsu IH, Sun YC, Wang YK, Wu TK (2013) Immunocapture couples with matrix-assisted laser desorption/ionization time-of-flight mass spectrometry for rapid detection of type 1 dengue virus. *J Chromatogr A* 1288: 21–27.
- Leli C, Cenci E, Cardaccia A, Moretti A, D'Alo F, et al. (2013) Rapid identification of bacterial and fungal pathogens from positive blood cultures by MALDI-TOF MS. *Int J Med Microbiol* 303: 205–209.
- Veloo AC, Erhard M, Welker M, Welling GW, Degener JE (2011) Identification of Gram-positive anaerobic cocci by MALDI-TOF mass spectrometry. *Syst Appl Microbiol* 34: 58–62.
- Richard B, Groisillier A, Badet C, Dorignac G, Lonvaud-Funel A (2001) Identification of salivary *Lactobacillus rhamnosus* species by DNA profiling and a specific probe. *Res Microbiol* 152: 157–165.
- Callaway A, Kostrzewa M, Willershausen B, Schmidt F, Thiede B, et al. (2013) Identification of *Lactobacilli* from deep carious lesions by means of species-specific PCR and MALDI-TOF mass spectrometry. *Clin Lab* 59: 1373–1379.
- Schmidt F, Fiege T, Hustoft HK, Kneist S, Thiede B (2009) Shotgun mass mapping of *Lactobacillus* species and subspecies from caries related isolates by MALDI-MS. *Proteomics* 9: 1994–2003.
- Carbonnelle E, Grohs P, Jacquier H, Day N, Tenza S, et al. (2012) Robustness of two MALDI-TOF mass spectrometry systems for bacterial identification. *J Microbiol Methods* 89: 133–136.
- Dupont C, Sivadon-Tardy V, Bille E, Dauphin B, Beretti JL, et al. (2010) Identification of clinical coagulase-negative staphylococci, isolated in microbiology laboratories, by matrix-assisted laser desorption/ionization-time of flight mass spectrometry and two automated systems. *Clin Microbiol Infect* 16: 998–1004.
- Duskova M, Sedo O, Ksicova K, Zdrahal Z, Karpiskova R (2012) Identification of lactobacilli isolated from food by genotypic methods and MALDI-TOF MS. *Int J Food Microbiol* 159: 107–114.
- Badet C, Thebaud NB (2008) Ecology of lactobacilli in the oral cavity: a review of literature. *Open Microbiol J* 2: 38–48.
- Colloca ME, Ahumada MC, Lopez ME, Nader-Macias ME (2000) Surface properties of lactobacilli isolated from healthy subjects. *Oral Dis* 6: 227–233.
- Malamud D, Tabak LA (1993) Saliva as a diagnostic fluid. New York, NY: New York Academy of Sciences. xii, 348 p.
- Yoshizawa JM, Schafer CA, Schafer JJ, Farrell JJ, Paster BJ, et al. (2013) Salivary biomarkers: toward future clinical and diagnostic utilities. *Clin Microbiol Rev* 26: 781–791.

Supporting Information

Figure S1 Comparison of seven *Lactobacillus* reference species (*L. acidophilus* ATCC 4356, *L. casei* ATCC 334, *L. fermentum* ATCC 14931, *L. oris* ATCC 49062, *L. plantarum* ATCC 8014, *L. rhamnosus* ATCC 7469, and *L. salivarius* ATCC 11741) with a *Lactobacillus* isolate derived from carious subjects' saliva. (PDF)

Acknowledgments

This work was supported by grants 81300880 and 81200762 from National Natural Science Foundation of China, funding from National Key Scientific Instrument and Equipment Development Projects (2012YQ180117) and Peking University School of Stomatology (PKUSS20110301). The funders had no role in study design, data collection and analysis, decision to publish, or preparation of the manuscript. We thank Ms. Meng Zhang from Beijing Bioyong Company, who kindly provided us with some technical support during the preparation of the article.

Author Contributions

Conceived and designed the experiments: FC QM XW. Performed the experiments: YZ YS QZ. Analyzed the data: YZ FC QM. Contributed reagents/materials/analysis tools: YL XW. Wrote the paper: YZ YL. Obtained biospecimen: YL.

33. Piwat S, Teanpaisan R, Thitasomakul S, Thearmontree A, Dahlen G (2010) *Lactobacillus* species and genotypes associated with dental caries in Thai preschool children. *Mol Oral Microbiol* 25: 157–164.
34. Gabris K, Nagy G, Madlena M, Denes Z, Marton S, et al. (1999) Associations between microbiological and salivary caries activity tests and caries experience in Hungarian adolescents. *Caries Res* 33: 191–195.
35. Wright JT, Cutter GR, Dasanayake AP, Macstiles H, Caufield PW (1992) Effect of Conventional Dental Restorative Treatment on Bacteria in Saliva. *Community Dent Oral Epidemiol* 20: 138–143.
36. Wicht MJ, Haak R, Schutt-Gerowitt H, Kneist S, Noack MJ, et al. (2004) Suppression of caries-related microorganisms in dentine lesions after short-term chlorhexidine or antibiotic treatment. *Caries Res* 38: 436–441.