

## DETERMINATION OF PHARMACEUTICALS IN ENVIRONMENTAL SAMPLES

### BACKGROUND

The full effects of pharmaceutical substances in the environment are largely unknown however the risk is significant enough that many new studies are being initiated by such organizations as the U.S. Environmental Protection Agency and the World Health Organization in order to better understand the fate of these chemicals.

Worldwide, thousands of tons of active pharmaceutical substances are utilized in preserving human and animal health but very little is known about the ultimate fate of these drugs. A large portion of each dose can be excreted and unused medicine is often disposed of via sewer systems. Recent studies have indicated that a significant portion of urban sewage contains drug compounds that many pharmaceuticals are not completely eliminated in sewage treatment plants.

Additional sources of drugs in the environment include agricultural runoff (veterinary drugs excreted by domesticated animals) and landfill leachate (discarded drugs from households). The effects of the drugs and their metabolites on aquatic environments and organisms are largely unknown, as are the potential impacts on human health. They are, however, likely to have some impact and their presence is growing more common, thus additional research in this area is warranted.

This report will describe the use of two LC-MS methods for the examination of pharmaceuticals in environmental samples (concentrated sewage, surface water and drinking water). These analyses were performed utilizing an XBridge™ C18 HPLC column for the chromatographic separations.

### EXPERIMENTAL

#### Samples

The analyses included standard solutions of pharmaceuticals as well as environmental samples (concentrated sewage, surface water and drinking water samples). Fourteen pharmaceuticals (and four internal standards) were analyzed (Table 1) using two LC.

		Retention Time (min)	Ionization (ESI)	Precursor Ion (m/z)	Product Ion (m/z)
Ciprofloxacin	Antibiotic	9.8	Negative	331.9	287.9
Norfloxacin	Antibiotic	9.7	Negative	319.8	275.9
Ofloxacin	Antibiotic	9.7	Negative	361.8	317.9
Carbamazepine	Antiepileptic	13.4	Negative	237.0	193.9
Acebutolol	Beta blocker	10.5	Negative	336.8	116.0
Atenolol	Beta blocker	3.4	Negative	267.0	144.9
Metoprolol	Beta blocker	10.7	Negative	267.9	190.9
Sotalol	Beta blocker	3.1	Negative	254.8	132.9
Clofibric acid	Drug metabolite	8.9	Negative	212.9	126.9
Enrofloxacin (IS)	IS for the antibiotics	10.3	Negative	359.9	315.9
Dihydrocarbamazepine (IS)	IS for carbamazepine	13.5	Negative	239.0	193.9
Alprenolol (IS)	IS for the beta blockers	12.8	Negative	249.9	172.9
Diclofenac	Anti-inflammatory	11.5	Positive	293.8	249.9
Ibuprofen	Anti-inflammatory	10.8	Positive	205.1	161.0
Ketoprofen	Anti-inflammatory	10.0	Positive	253.0	209.0
Naproxen	Anti-inflammatory	9.5	Positive	229.0	169.9
Bezafibrate	Lipid regulator	10.6	Positive	360.0	273.9
Fenoprop (IS)	IS for the anti-inflammatory, bezafibrate and clofibric acid	10.5	Positive	266.8	194.8

IS = internal standard

Table 1. The analyzed compounds, their retention times and MS parameters.

# [APPLICATION NOTE]

Sewage samples (influent and effluent) were obtained as composite samples over 24 hours and stored at -18 °C. River water samples were collected as grab samples, obtained using glass bottles and stored at 4 °C.

## Sample Preparation

Solid-phase extraction was used to separate the pharmaceuticals from the water component of the sample. The samples were filtered through 0.45 µm filters which were pre-washed with hexane, acetone, methanol and water. The pH of the samples was adjusted to 2.0 using concentrated HCL. Oasis® MCX 3 cc (60 mg – Part Number 186000253) was used as the solid-phase adsorbent.

The adsorbent was pre-conditioned with 2 mL of hexane, 2 mL of acetone and 10 mL of methanol and 10 mL of non-contaminated groundwater (pH adjusted to 2.0). The samples were added to the cartridges at a flow rate of 8 mL/min. The cartridges were dried with nitrogen for 1 hour and the pharmaceuticals eluted using 4 x 1 mL of acetone. The extracts were then evaporated to 100 µL with nitrogen and 100 µL of methanol was added. Evaporation continued until the volume was 50 µL. 450 µL of ammonium hydroxide was added and the extracts stored at -18 °C.

HPLC/MS Conditions	
Column:	XBridge C <sub>18</sub> , 2.1 x 50mm, 5 µm
Part Number:	186003108
Flow Rate:	0.2 mL/min
Injection Volume:	20 µL
Temperature:	30 °C
MS Conditions	
MS System:	Quattro Micro triple-quadrupole mass spectrometer (Micromass®) equipped with an electrospray ionization (ESI) source
Desolvation & Nebulizing Gas:	Nitrogen
Collision Gas:	Argon
Operating Mode:	MRM

The cone voltage and collision energy were optimized for each analyte by direct infusion of pure compound to the MS/MS compartment (Table 1).

The compounds were analyzed using two LC-MS/MS methods, one to analyze the negatively ionized compounds and another to analyze the positively ionized compounds (Table 1). It should be noted that the LC methods were not optimized to a great detail. Therefore, even better chromatograms can be expected in the future.

The LC method for the negatively ionized compounds was:

Time (min)	% of eluent A (5 mM NH <sub>4</sub> OH)	% of eluent B (Acetonitrile)
0	95	5
1	95	5
12	40	60
13	95	5
25	95	5

Also 10 mM NH<sub>4</sub>OH was tested but the peak shape was more symmetrical with the 5 mM solution. Good peak shapes was obtained also by using 10 mM ammonium acetate as the aqueous eluent. However, since the negative ionization of compounds is hampered at lower pH, sensitivity was reduced with this eluent. Peak shapes were acceptable for all the analysed compounds.

For the positively ionized compounds, the following LC method was used:

Time (min)	% of eluent A (0.5% Formic Acid)	% of eluent B (Acetonitrile)
0	95	5
1	95	5
14	30	70
15	95	5
25	95	5

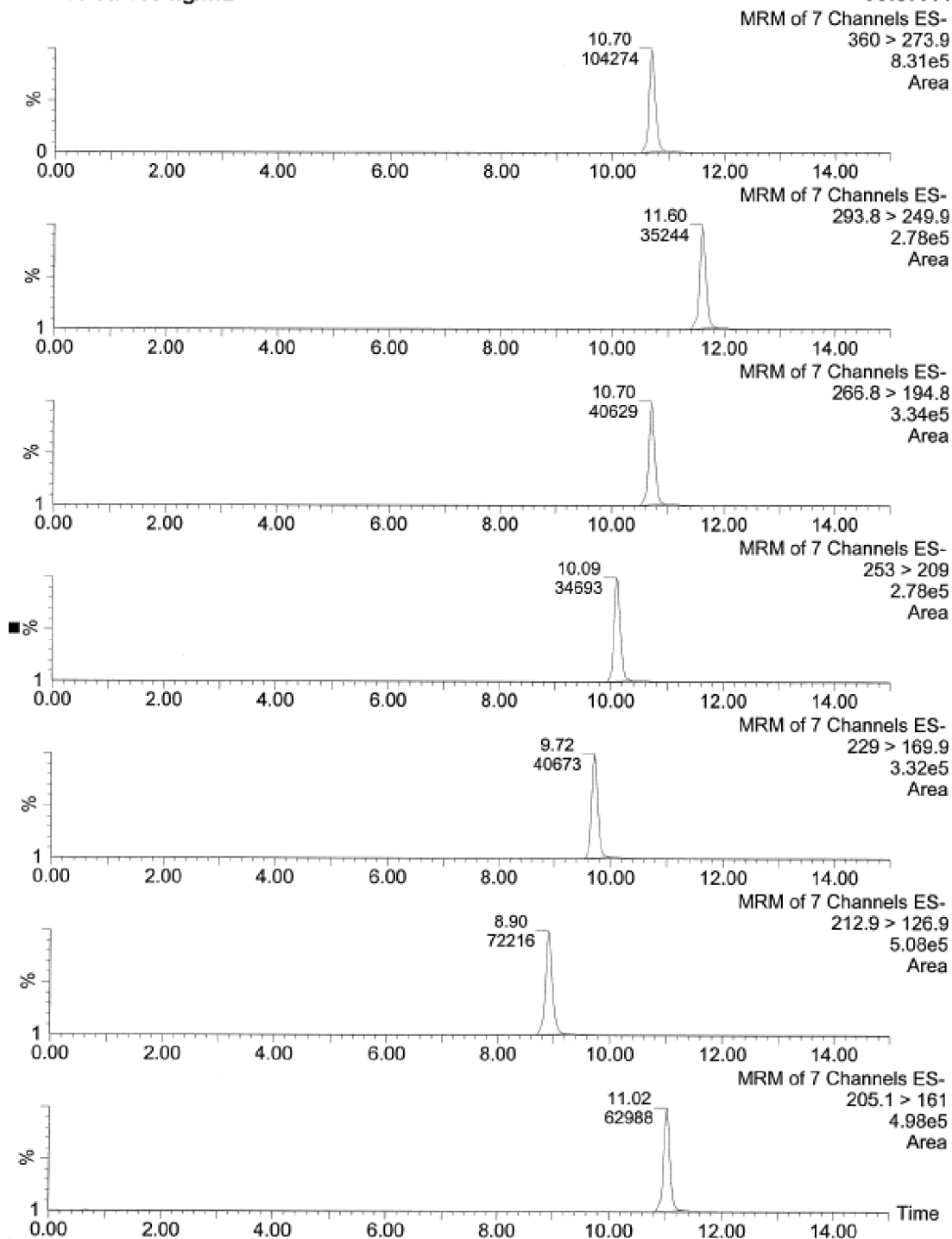
Also 10 mM ammonium acetate was tested but the antibiotics could not be well resolved with that eluent. Peak shapes were acceptable for all the other compounds except for atenolol and sotalol that eluted early in the run. Peaks representing these compounds were wide and tailing.

## RESULTS AND DISCUSSION

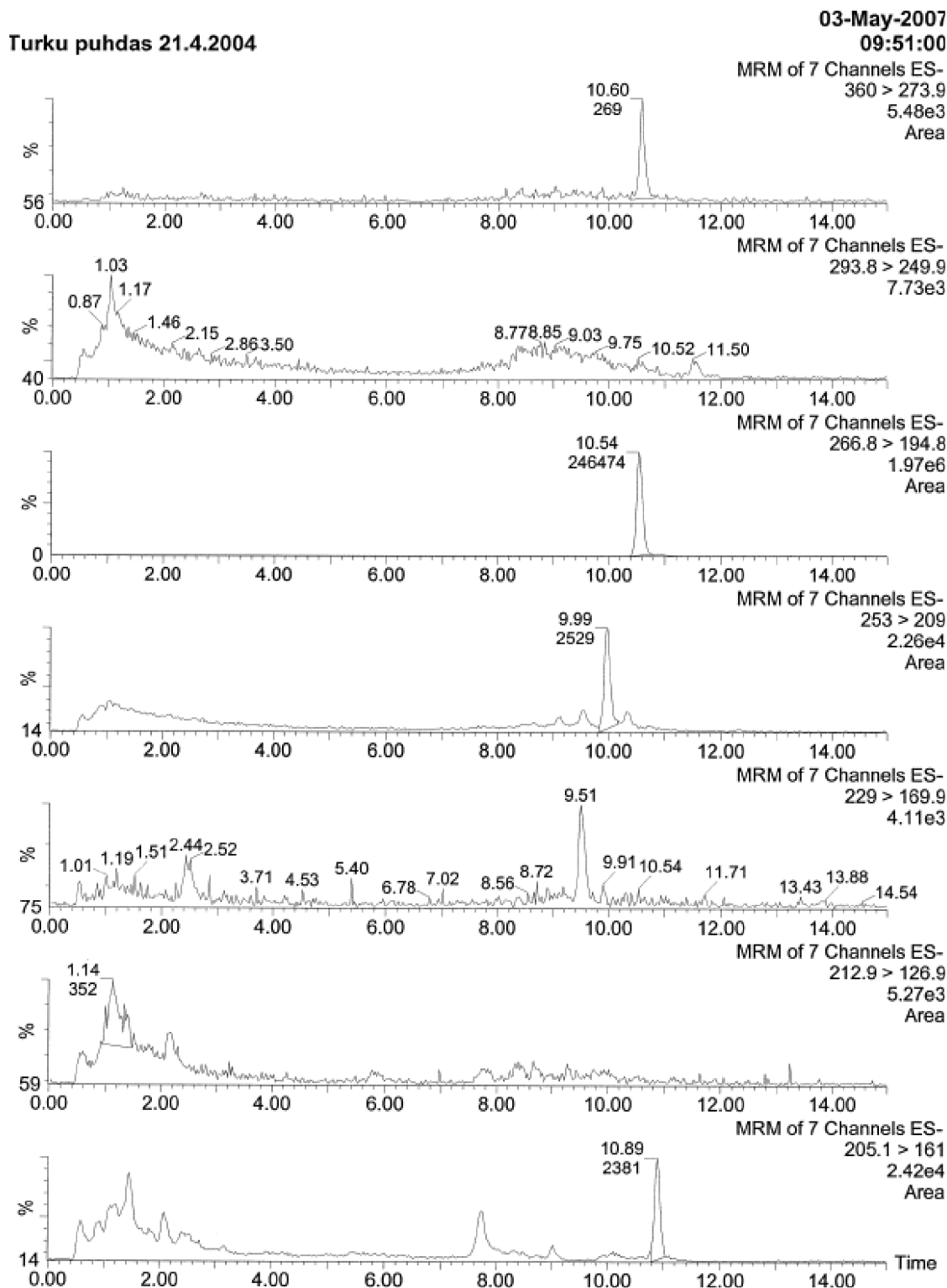
Acidics st. 100 ng/mL

03-May-2007

08:57:44



Standard – Negatively Ionized – 100 ng/mL.



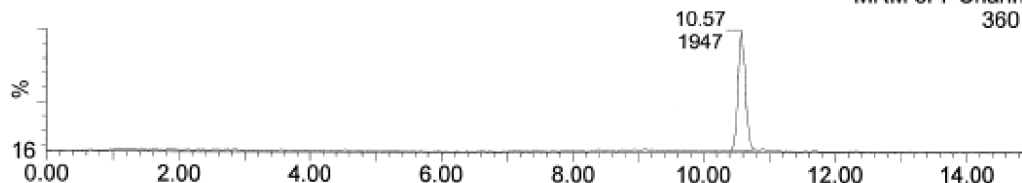


Aurajoki Halinen 16.3.2004

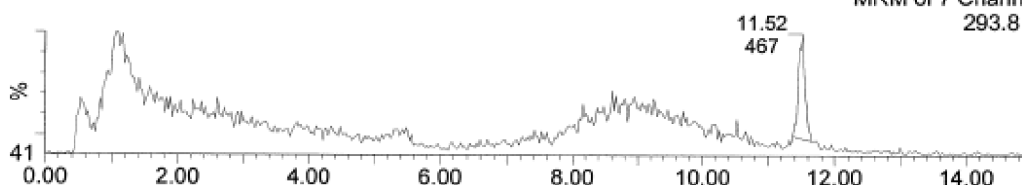
03-May-2007

11:01:04

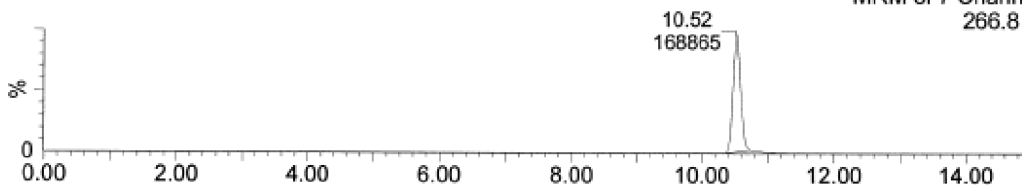
MRM of 7 Channels ES-  
360 > 273.9  
1.91e4  
Area



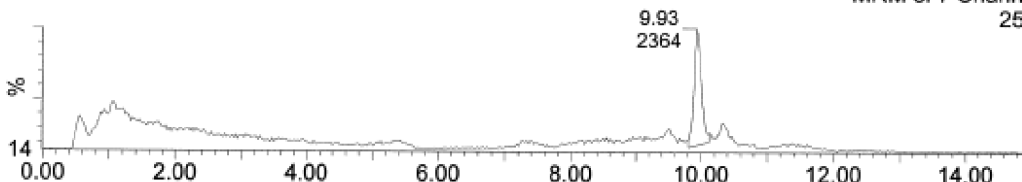
MRM of 7 Channels ES-  
293.8 > 249.8  
7.67e3  
Area



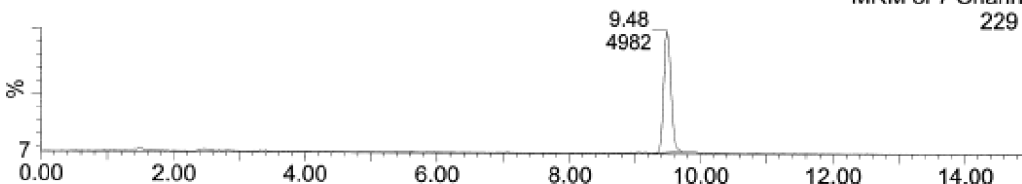
MRM of 7 Channels ES-  
266.8 > 194.8  
1.38e6  
Area



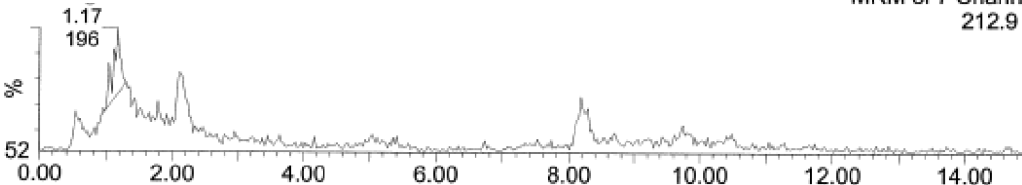
MRM of 7 Channels ES-  
253 > 209  
2.19e4  
Area



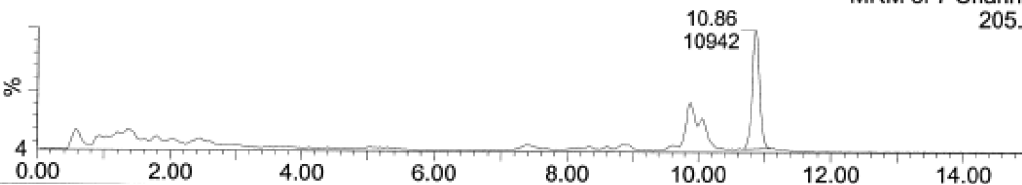
MRM of 7 Channels ES-  
229 > 169.9  
4.39e4  
Area



MRM of 7 Channels ES-  
212.9 > 126.9  
6.00e3  
Area



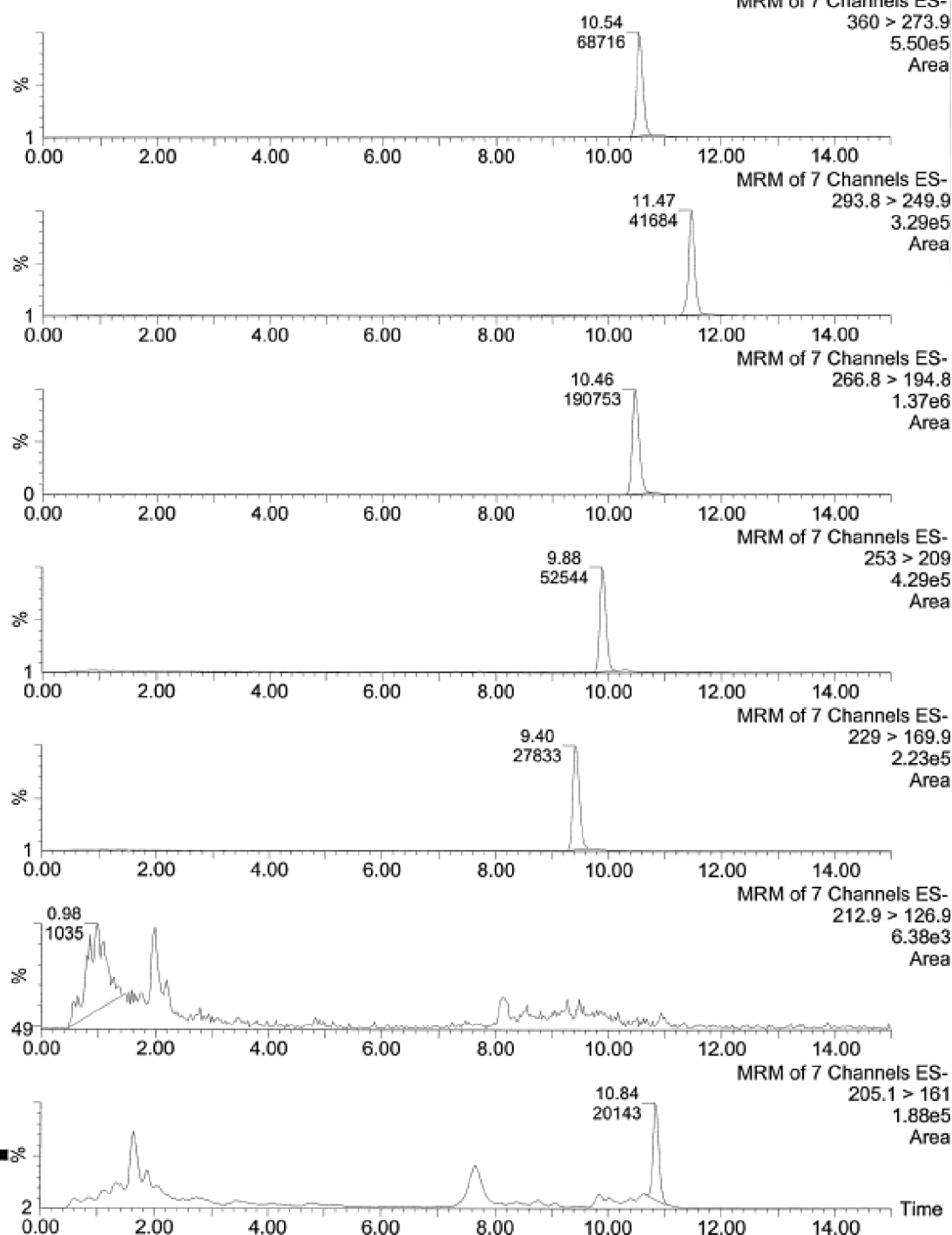
MRM of 7 Channels ES-  
205.1 > 161  
9.17e4  
Area



Aura JVP effluent 16.3.2004

03-May-2007

11:22:46

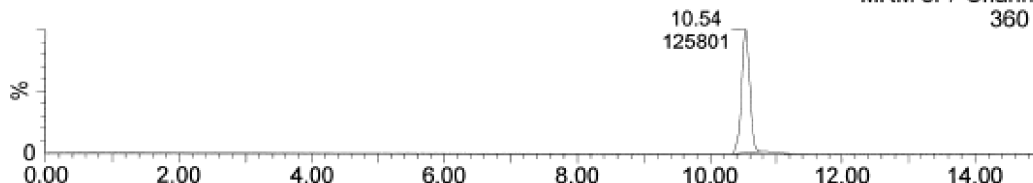


Aura JVP influent 16.3.2004

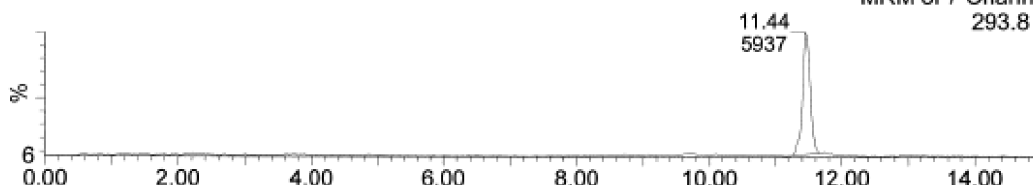
03-May-2007

11:49:24

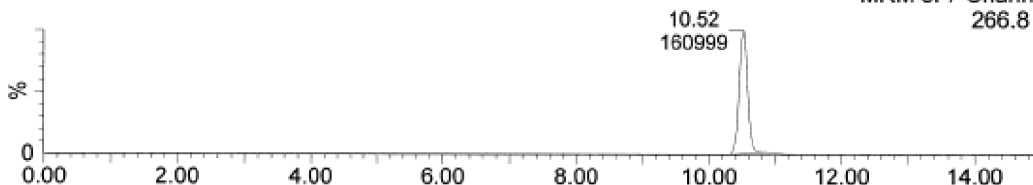
MRM of 7 Channels ES-  
360 > 273.9  
8.92e5  
Area



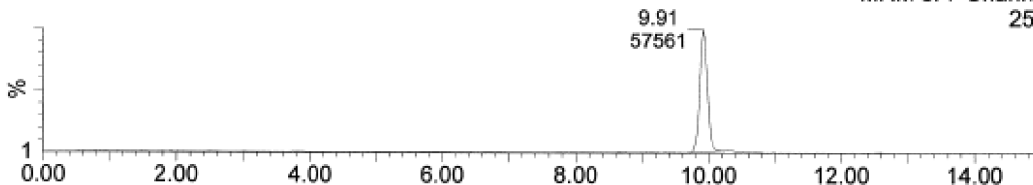
MRM of 7 Channels ES-  
293.8 > 249.9  
4.85e4  
Area



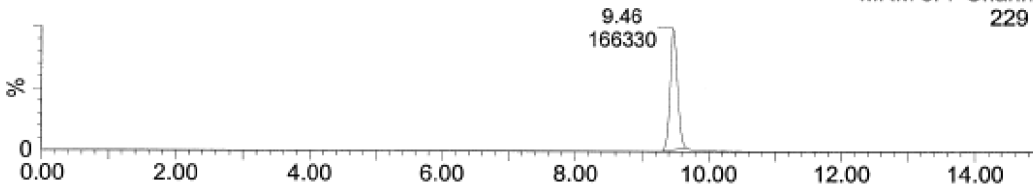
MRM of 7 Channels ES-  
266.8 > 194.8  
1.12e6  
Area



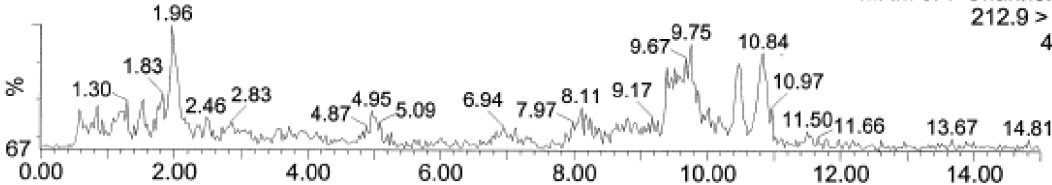
MRM of 7 Channels ES-  
253 > 209  
4.49e5  
Area



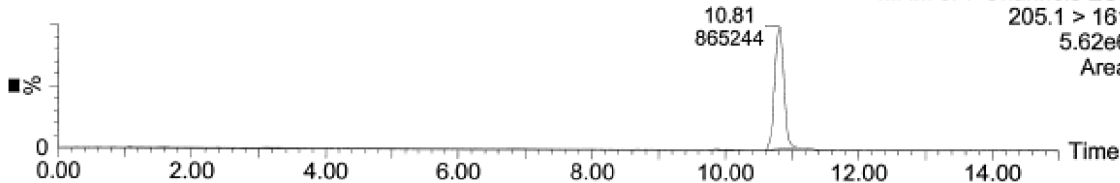
MRM of 7 Channels ES-  
229 > 169.9  
1.26e6  
Area

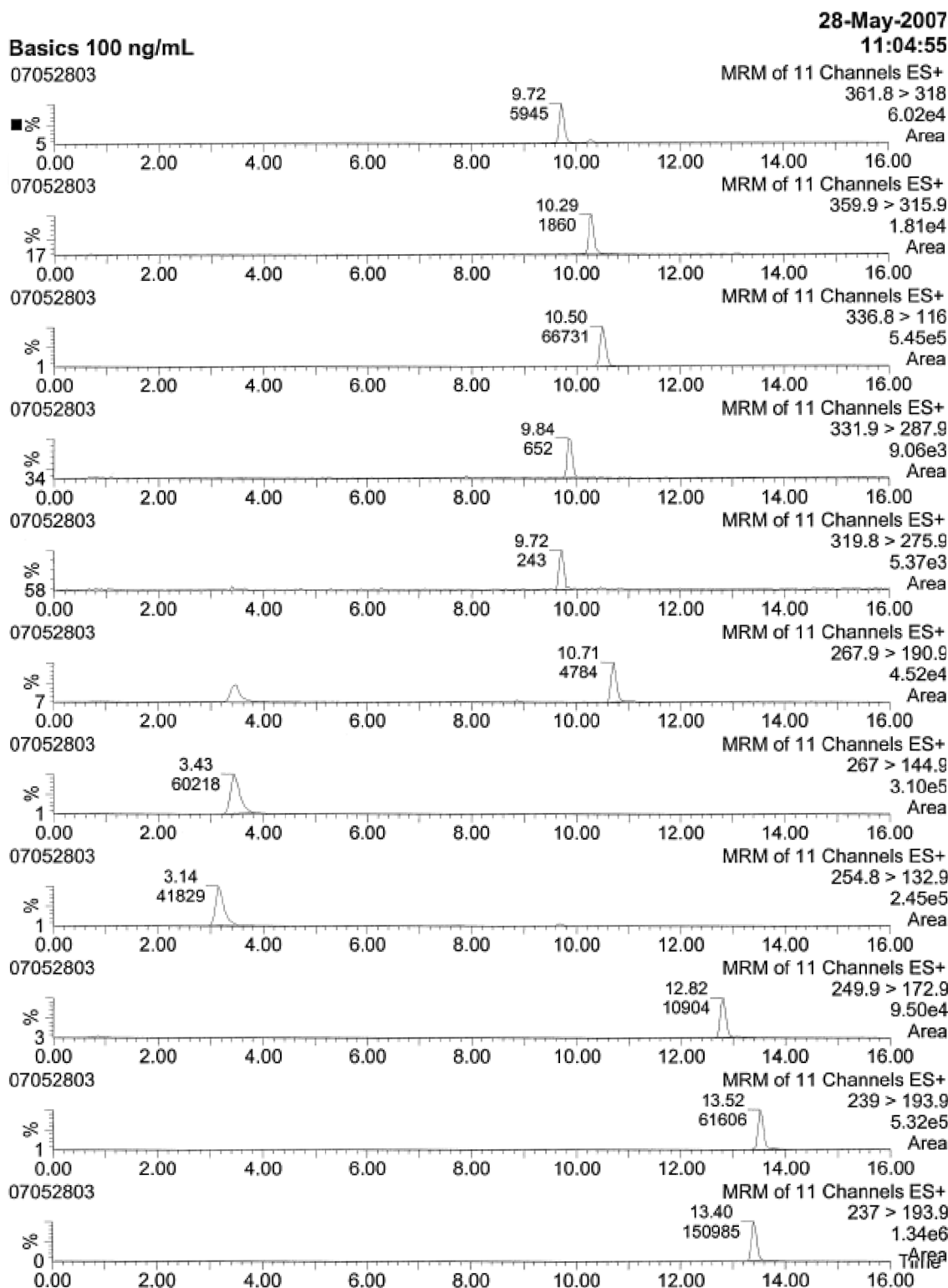


MRM of 7 Channels ES-  
212.9 > 126.9  
4.63e3



MRM of 7 Channels ES-  
205.1 > 161  
5.62e6  
Area







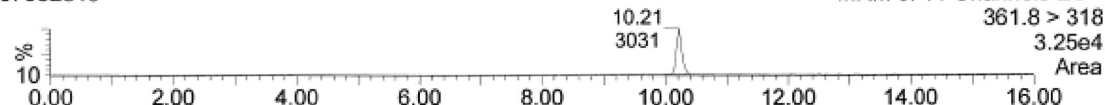
# **Vaasa Puhdas 3.5.04**

28-May-2007

17:17:33

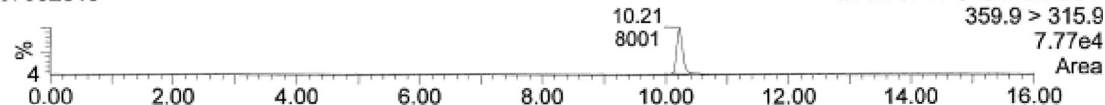
07052815

MRM of 11 Channels ES+  
361.8 > 318  
3.25e4  
Area



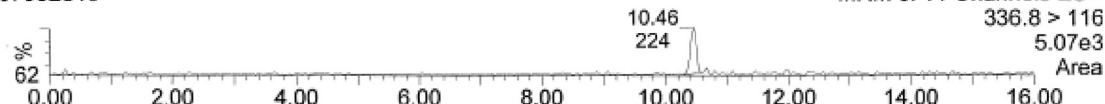
07052815

MRM of 11 Channels ES+  
359.9 > 315.9  
7.77e4  
Area



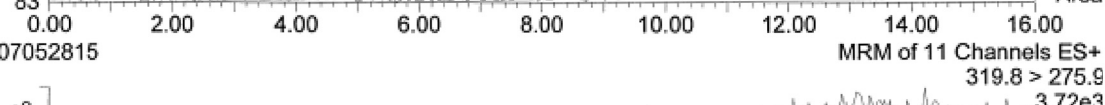
07052815

MRM of 11 Channels ES+  
336.8 > 116  
5.07e3  
Area



07052815

MRM of 11 Channels ES+  
331.9 > 287.9  
3.77e3  
Area



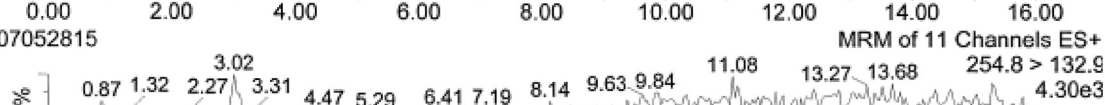
07052815

MRM of 11 Channels ES+  
319.8 > 275.9  
3.72e3  
Area



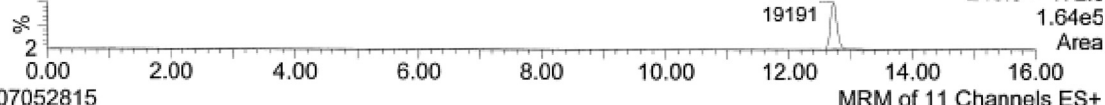
07052815

MRM of 11 Channels ES+  
267.9 > 190.9  
4.38e3  
Area



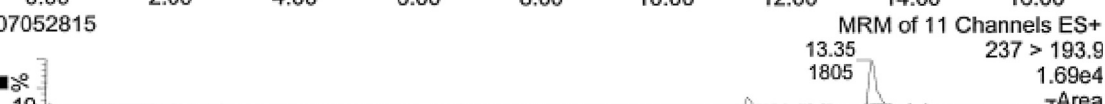
07052815

MRM of 11 Channels ES+  
267 > 144.9  
6.55e3  
Area



07052815

MRM of 11 Channels ES+  
254.8 > 132.9  
4.30e3  
Area



07052815

MRM of 11 Channels ES+  
249.9 > 172.9  
1.64e5  
Area



07052815

MRM of 11 Channels ES+  
239 > 193.9  
1.79e6  
Area



07052815

MRM of 11 Channels ES+  
237 > 193.9  
1.69e4  
Area

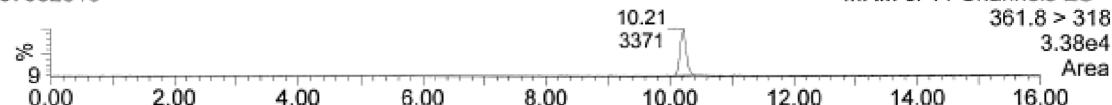


28-May-2007  
17:46:13

VAJ V84 16.6.05

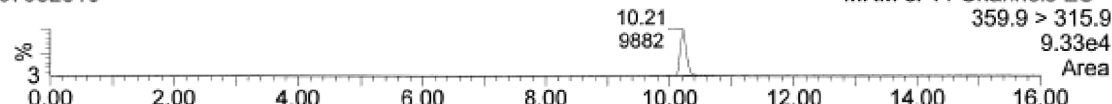
07052816

MRM of 11 Channels ES+  
361.8 > 318  
3.38e4  
Area



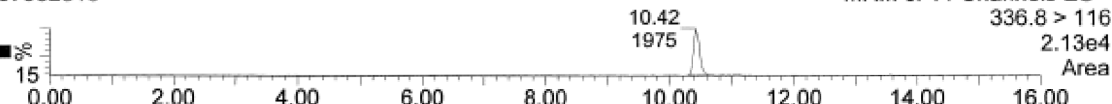
07052816

MRM of 11 Channels ES+  
359.9 > 315.9  
9.33e4  
Area



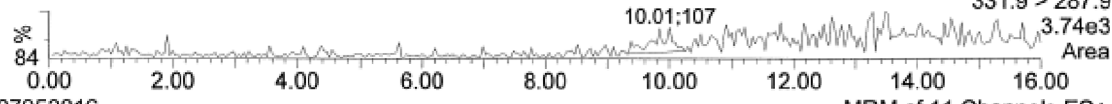
07052816

MRM of 11 Channels ES+  
336.8 > 116  
2.13e4  
Area



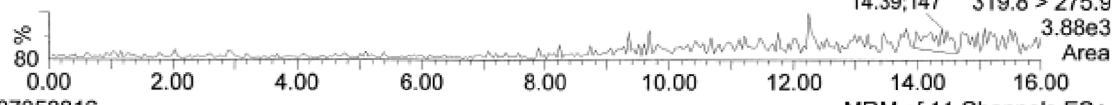
07052816

MRM of 11 Channels ES+  
331.9 > 287.9  
3.74e3  
Area



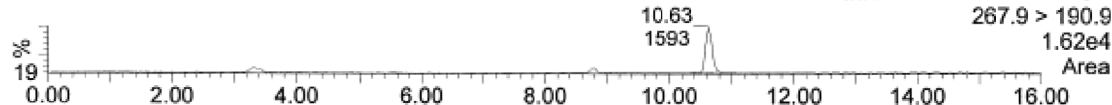
07052816

MRM of 11 Channels ES+  
14.39;147 319.8 > 275.9  
3.88e3  
Area



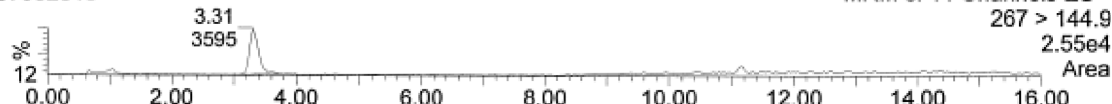
07052816

MRM of 11 Channels ES+  
267.9 > 190.9  
1.62e4  
Area



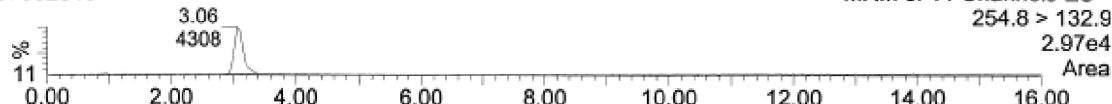
07052816

MRM of 11 Channels ES+  
267 > 144.9  
2.55e4  
Area



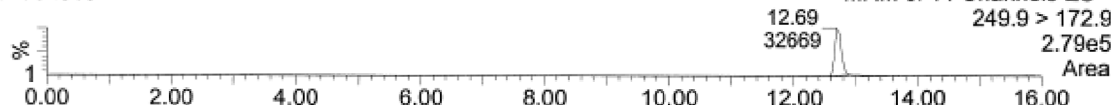
07052816

MRM of 11 Channels ES+  
254.8 > 132.9  
2.97e4  
Area



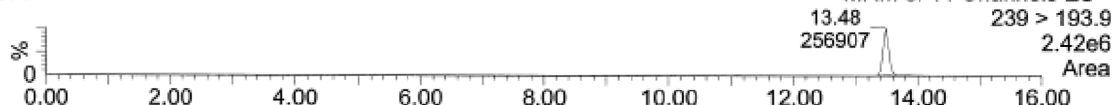
07052816

MRM of 11 Channels ES+  
249.9 > 172.9  
2.79e5  
Area



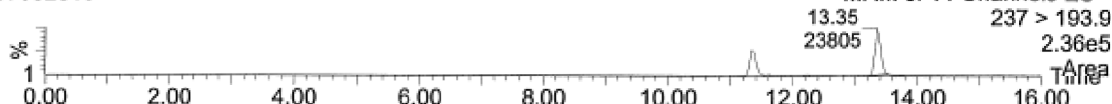
07052816

MRM of 11 Channels ES+  
3.48 239 > 193.9  
5907 2.42e6  
Area



07052816

MRM of 11 Channels ES+  
237 > 193.9  
2.36e5  
Area

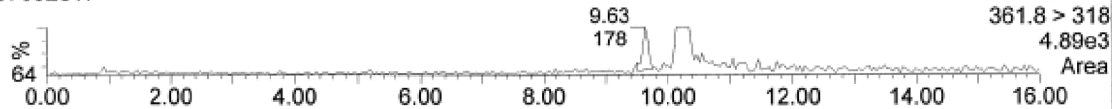


Riihimäki lahteva 17.6.05

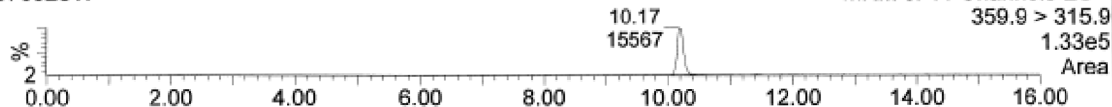
28-May-2007

18:14:50

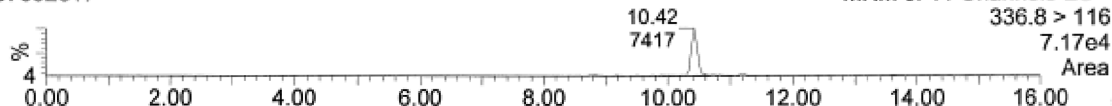
07052817



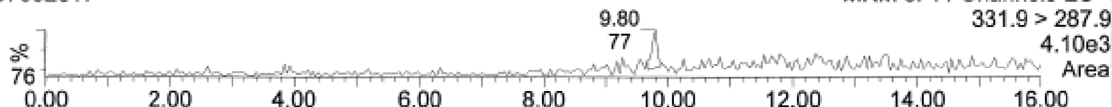
07052817



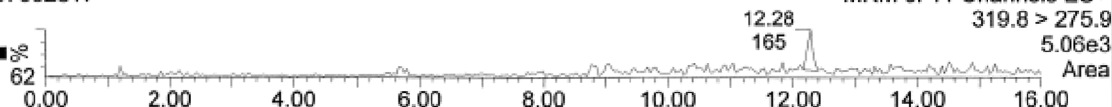
07052817



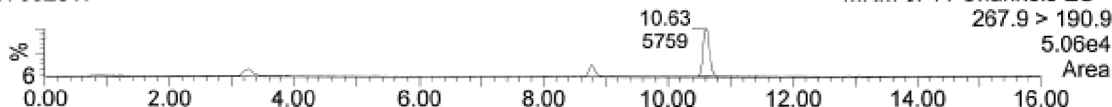
07052817



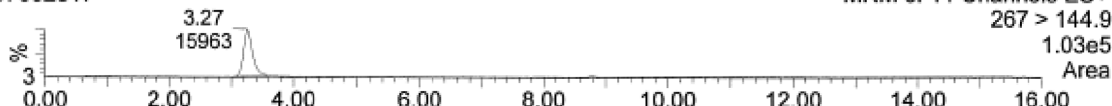
07052817



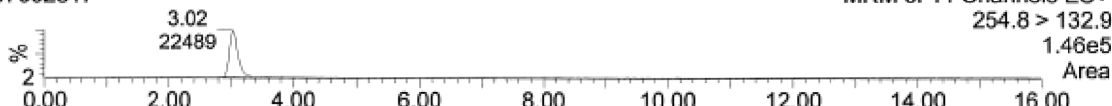
07052817



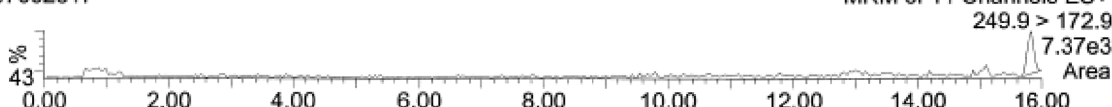
07052817



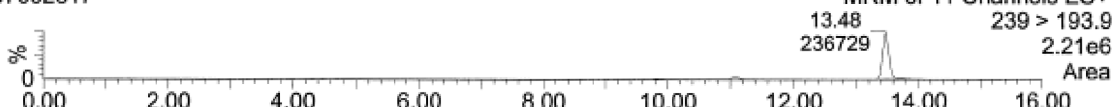
07052817



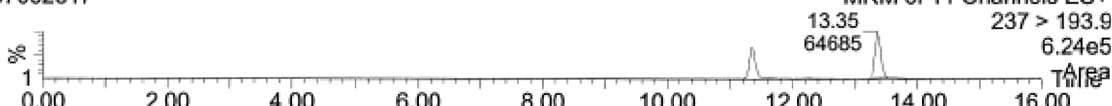
07052817



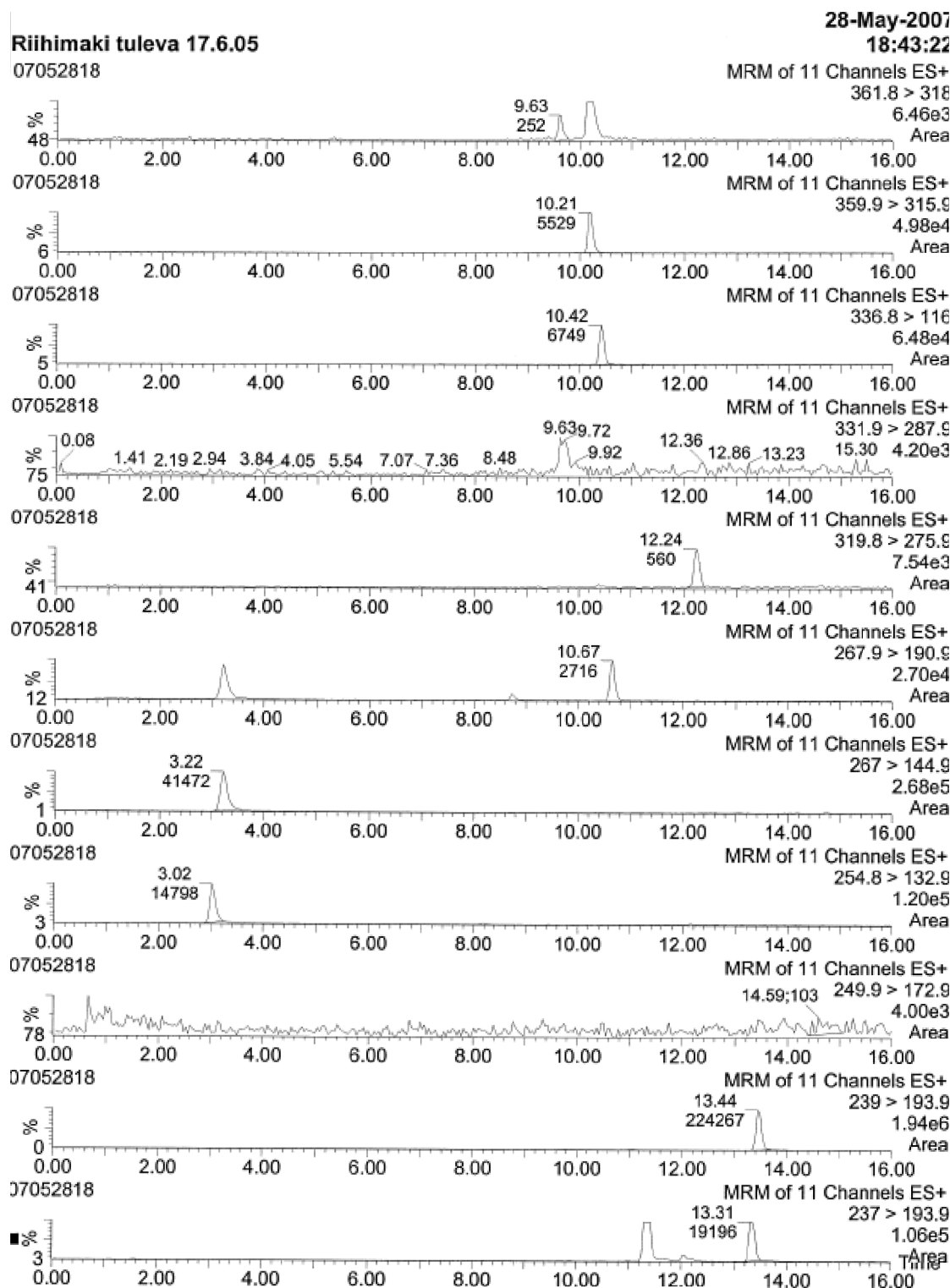
07052817



07052817









## CONCLUSION

It was determined that the XBridge C<sub>18</sub> could detect the compounds in sewage, surface and drinking water samples. The peak shapes and sensitivity were good and the column was proven to be highly usable in the environmental analysis of pharmaceuticals.

*Data for this report was provided courtesy of Abo Akademi University, Abo, Finland*

# Waters

THE SCIENCE OF WHAT'S POSSIBLE.™

Waters, The Science of What's Possible, XBridge, Oasis and Micromass are trademarks of Waters Corporation. All other trademarks are acknowledged.

©2008 Waters Corporation. Printed in the U.S.A.  
April 2008 WA60205 VW-PDF

**Waters Corporation**  
34 Maple Street  
Milford, MA 01757 U.S.A.  
T: 1 508 478 2000  
F: 1 508 872 1990  
[www.waters.com](http://www.waters.com)

